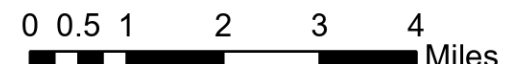


Pilot Map

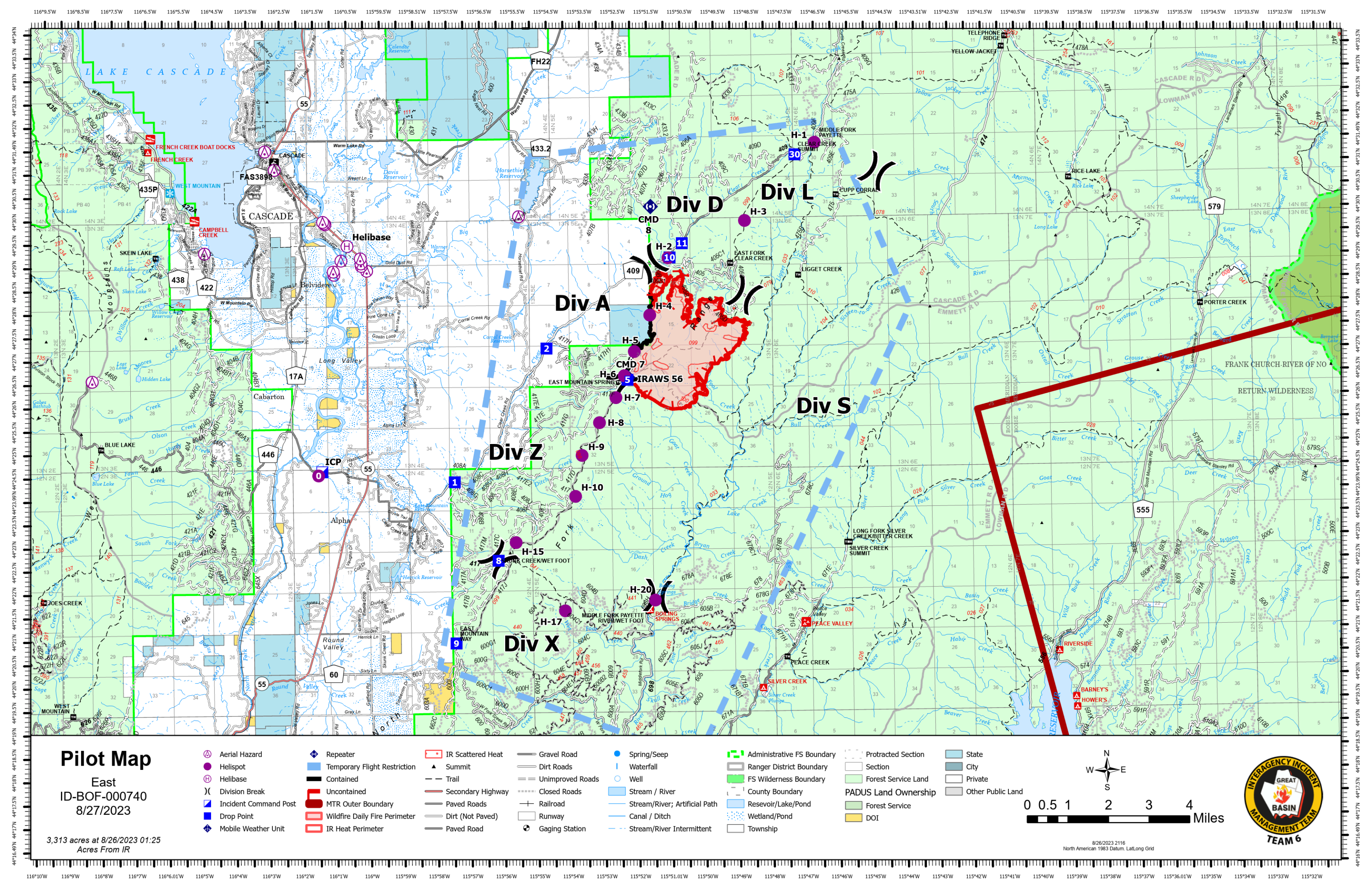
East
ID-BOF-000740
8/27/2023

3,313 acres at 8/26/2023 01:25
Acres From IR

- | | | | | | | | |
|-------------------------|---------------------------------|---------------------|--------------------|---------------------------------|------------------------------|------------------------|---------------------|
| ⊕ Aerial Hazard | ⬢ Repeater | ⬢ IR Scattered Heat | ⬢ Gravel Road | ⬢ Spring/Seep | ⬢ Administrative FS Boundary | ⬢ Protracted Section | ⬢ State |
| ⊕ Helispot | ⬢ Temporary Flight Restriction | ▲ Summit | ⬢ Dirt Roads | ⬢ Waterfall | ⬢ Ranger District Boundary | ⬢ Section | ⬢ City |
| ⊕ Helibase | ⬢ Contained | ⬢ Trail | ⬢ Unimproved Roads | ⬢ Well | ⬢ FS Wilderness Boundary | ⬢ Forest Service Land | ⬢ Private |
| ⊕ Division Break | ⬢ Uncontained | ⬢ Secondary Highway | ⬢ Closed Roads | ⬢ Stream / River | ⬢ County Boundary | ⬢ PADUS Land Ownership | ⬢ Other Public Land |
| ⬢ Incident Command Post | ⬢ MTR Outer Boundary | ⬢ Paved Roads | ⬢ Railroad | ⬢ Stream/River; Artificial Path | ⬢ Reservoir/Lake/Pond | ⬢ Forest Service | |
| ⬢ Drop Point | ⬢ Wildfire Daily Fire Perimeter | ⬢ Dirt (Not Paved) | ⬢ Runway | ⬢ Canal / Ditch | ⬢ Wetland/Pond | ⬢ DOI | |
| ⬢ Mobile Weather Unit | ⬢ IR Heat Perimeter | ⬢ Paved Road | ⬢ Gaging Station | ⬢ Stream/River Intermittent | ⬢ Township | | |



8/26/2023 2116
North American 1983 Datum, Lat,Long Grid



FC Point Type	Label	Comments	Elevation (Feet)	Latitude WGS84 DDM	Longitude WGS84 DDM
Repeater	CMD 7			44° 26.542' N	115° 52.212' W
Repeater	CMD 8			44° 30.181' N	115° 51.439' W
Incident Command Post	ICP			44° 24.587' N	116° 01.351' W
Helispot	H-2	Type 2 & 3. Dust abatement recommended.	5400	44° 29.080' N	115° 50.933' W
Helispot	H-6	Type 2 & 3	7650	44° 26.570' N	115° 52.289' W
Helispot	H-4	Type 2 & 3	7150	44° 27.860' N	115° 51.501' W
Helispot	H-20	Type 2 & 3		44° 21.754' N	115° 51.450' W
Helispot	H-17	Type 3		44° 21.550' N	115° 54.141' W
Helispot	H-5	Few small trees need cleared. Rigs will have to move if used.		44° 27.085' N	115° 51.978' W
Helispot	H-15	Type 2 & 3		44° 23.032' N	115° 55.586' W
Helispot	H-1	Type 2 & 3		44° 31.508' N	115° 46.505' W
Helispot	H-7	Good h-7		44° 26.104' N	115° 52.546' W
Helispot	H-8	Type 2		44° 25.573' N	115° 53.048' W
Helispot	H-9	Type 3		44° 24.877' N	115° 53.581' W
Helispot	0	Good for T2/T3 just west of comm trailer. Wind sock is on comm trailer.	4700	44° 24.509' N	116° 01.459' W
Helispot	H-10	Type 2&3		44° 24.003' N	115° 53.792' W
Helispot	H-3	Good		44° 29.855' N	115° 48.628' W
Helibase	Helibase			44° 29.410' N	116° 00.531' W
Drop Point	8			44° 22.649' N	115° 56.114' W
Drop Point	2			44° 27.174' N	115° 54.602' W
Drop Point	5			44° 26.482' N	115° 52.194' W
Drop Point	9			44° 20.883' N	115° 57.403' W
Drop Point	10	DP10		44° 29.087' N	115° 50.884' W
Drop Point	30			44° 31.253' N	115° 47.101' W
Drop Point	11			44° 29.388' N	115° 50.511' W
Drop Point	1			44° 24.338' N	115° 57.395' W