

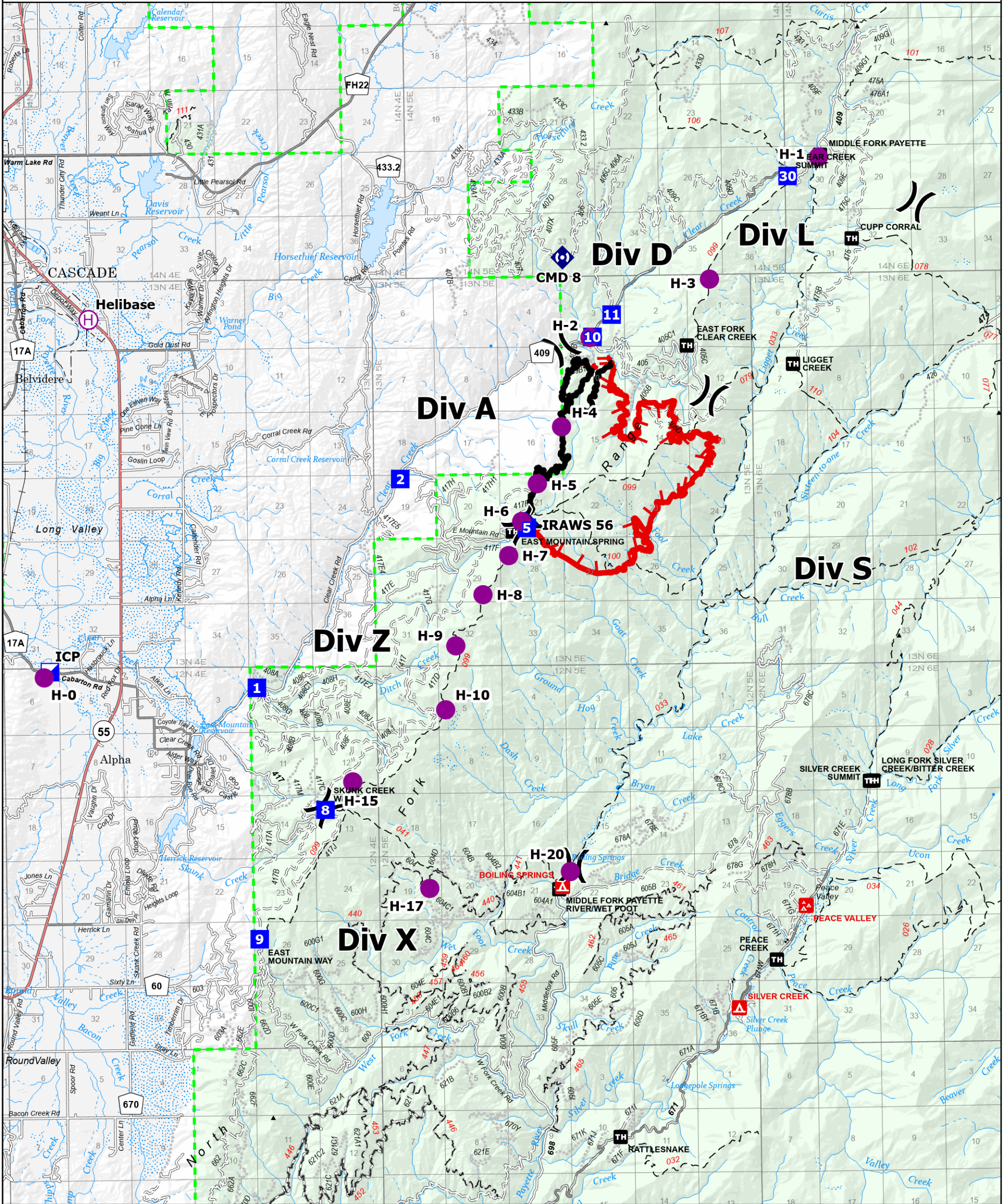
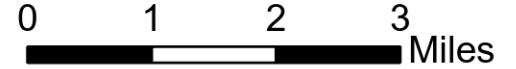
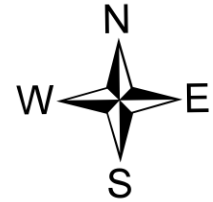


IAP

Containment: 39%

East
ID-BOF-000740

3,313 acres at 8/26/2023 01:25



- | | | | | |
|-------------------------|-----------------------|--------------------|---------------------------------|-----------------------|
| ■ Contained Perimeter | ◆ Mobile Weather Unit | — Paved Roads | — Railroad | □ Incorporated Place |
| ▬ Uncontained Perimeter | ◆ Repeater | — Dirt (Not Paved) | □ Runway | ■ Lake/Pond |
| ● Helispot | ▲ Campground | — Paved Road | — Stream/River; Artificial Path | ■ Reservoir |
| ⊙ Helibase | ■ Group Campground | — Gravel Road | — Canal / Ditch | ■ Forest Service Land |
| × Division Break | ■ Trailhead | — Dirt Roads | — Stream/River Intermittent | |
| ■ Incident Command Post | — Trail | — Unimproved Roads | — Administrative FS Boundary | |
| ■ Drop Point | — Secondary Highway | — Closed Roads | — County Boundary | |