

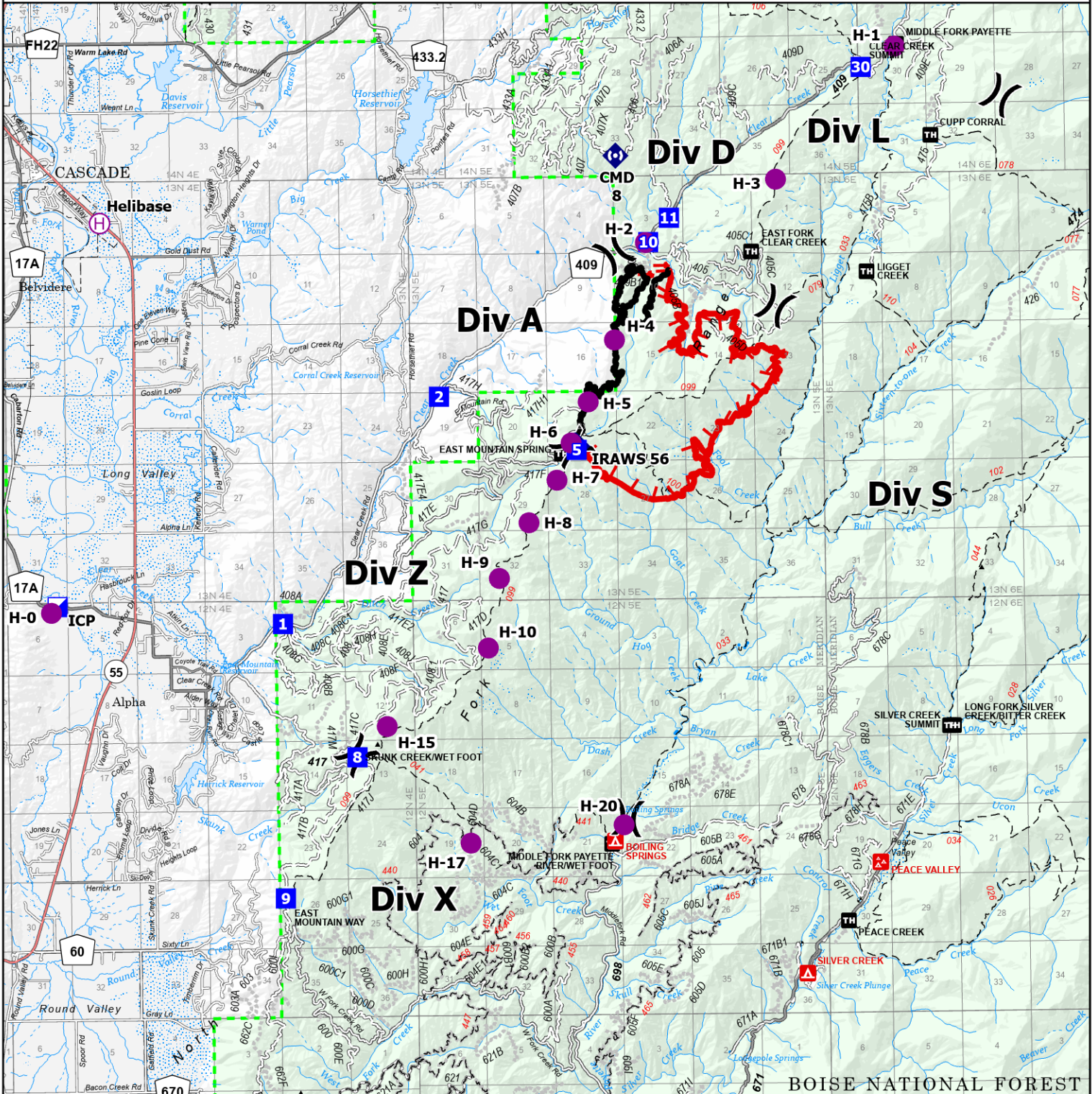
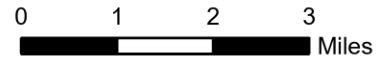


# IAP

## Containment: 39%

East  
ID-BOF-000740

3,313 acres at 8/28/2023 03:27



Contained Perimeter	Incident Command Post	Group Campground	Dirt (Not Paved)	Closed Roads	Incorporated Place
Uncontained Perimeter	Drop Point	Trailhead	Paved Road	Railroad	Lake/Pond
Helispot	Mobile Weather Unit	Trail	Gravel Road	Runway	Reservoir
Helibase	Repeater	Secondary Highway	Dirt Roads	Administrative FS Boundary	Forest Service Land
Division Break	Campground	Paved Roads	Unimproved Roads	County Boundary	