

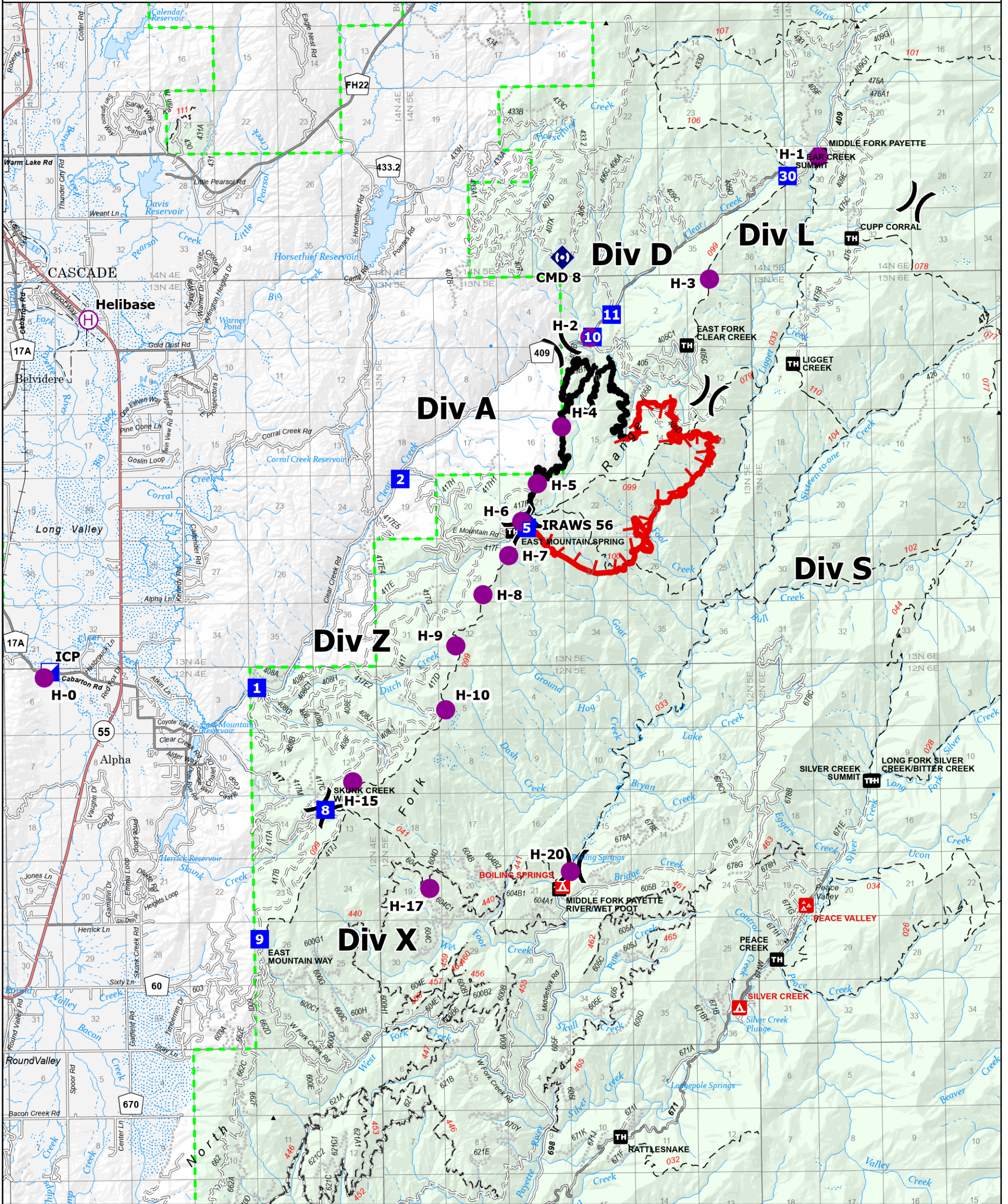
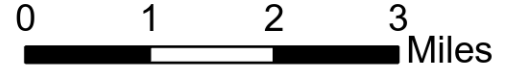
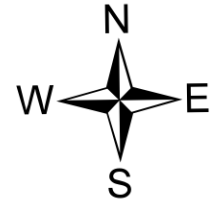


# IAP

## Containment: 51%

East  
ID-BOF-000740

3,313 acres at 8/28/2023 21:17



- |                         |                       |                    |                                 |                       |
|-------------------------|-----------------------|--------------------|---------------------------------|-----------------------|
| ■ Contained Perimeter   | ◆ Mobile Weather Unit | — Paved Roads      | — Railroad                      | □ Incorporated Place  |
| ▬ Uncontained Perimeter | ◆ Repeater            | — Dirt (Not Paved) | □ Runway                        | □ Lake/Pond           |
| ● Helispot              | ▲ Campground          | — Paved Road       | — Stream/River; Artificial Path | □ Reservoir           |
| ⊙ Helibase              | ■ Group Campground    | — Gravel Road      | — Canal / Ditch                 | □ Forest Service Land |
| × Division Break        | ■ Trailhead           | — Dirt Roads       | — Stream/River Intermittent     |                       |
| ■ Incident Command Post | — Trail               | — Unimproved Roads | — Administrative FS Boundary    |                       |
| ■ Drop Point            | — Secondary Highway   | — Closed Roads     | — County Boundary               |                       |