

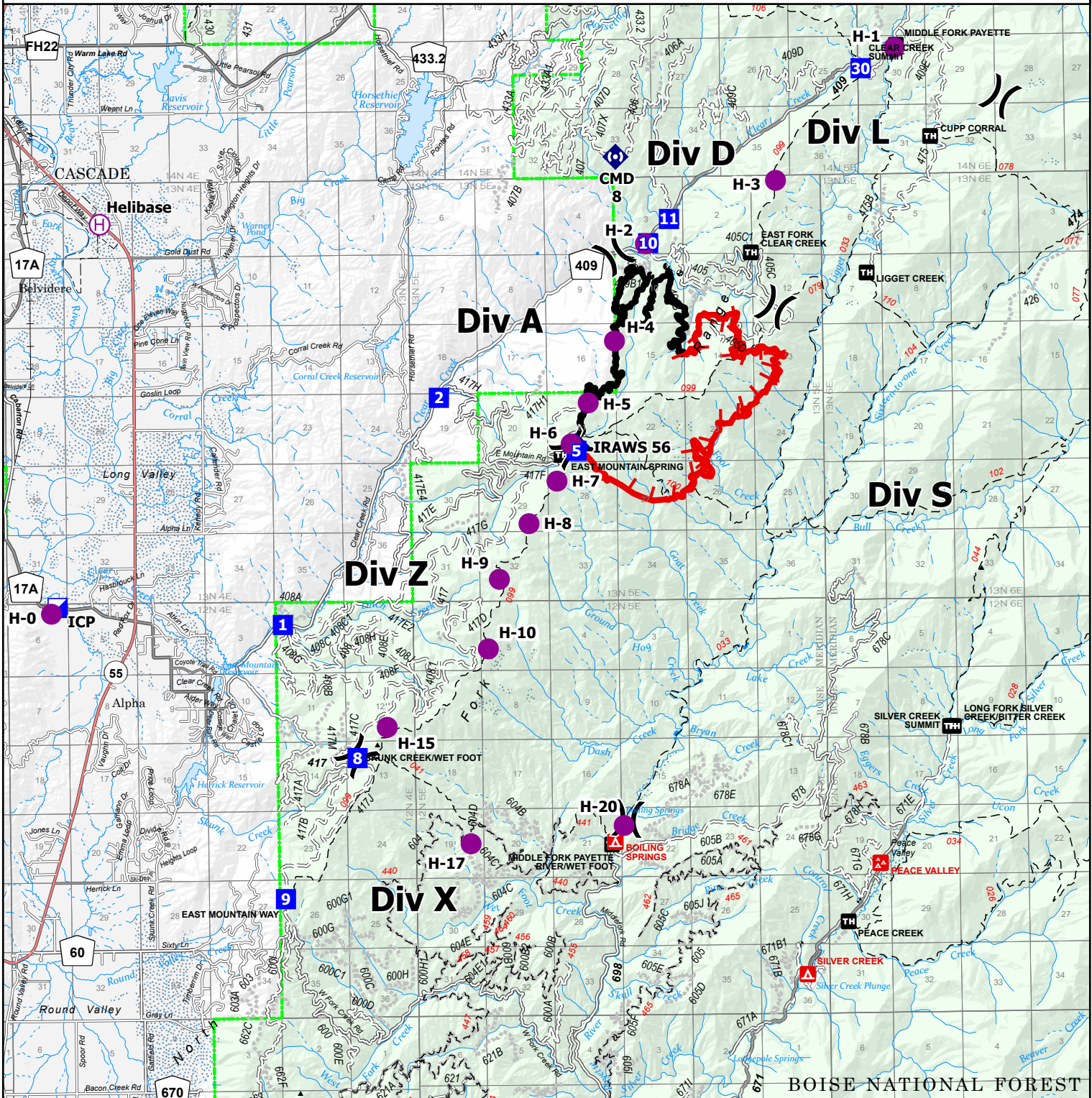
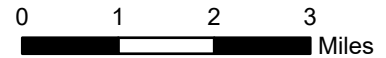


IAP

Containment: 51%

East
ID-BOF-000740

3,313 acres at 8/28/2023 03:27



- | | | | | | |
|-----------------------|-----------------------|-------------------|------------------|----------------------------|---------------------|
| Contained Perimeter | Incident Command Post | Group Campground | Dirt (Not Paved) | Closed Roads | Incorporated Place |
| Uncontained Perimeter | Drop Point | Trailhead | Paved Road | Railroad | Lake/Pond |
| Helispot | Mobile Weather Unit | Trail | Gravel Road | Runway | Reservoir |
| Helibase | Repeater | Secondary Highway | Dirt Roads | Administrative FS Boundary | Forest Service Land |
| Division Break | Campground | Paved Roads | Unimproved Roads | County Boundary | |