

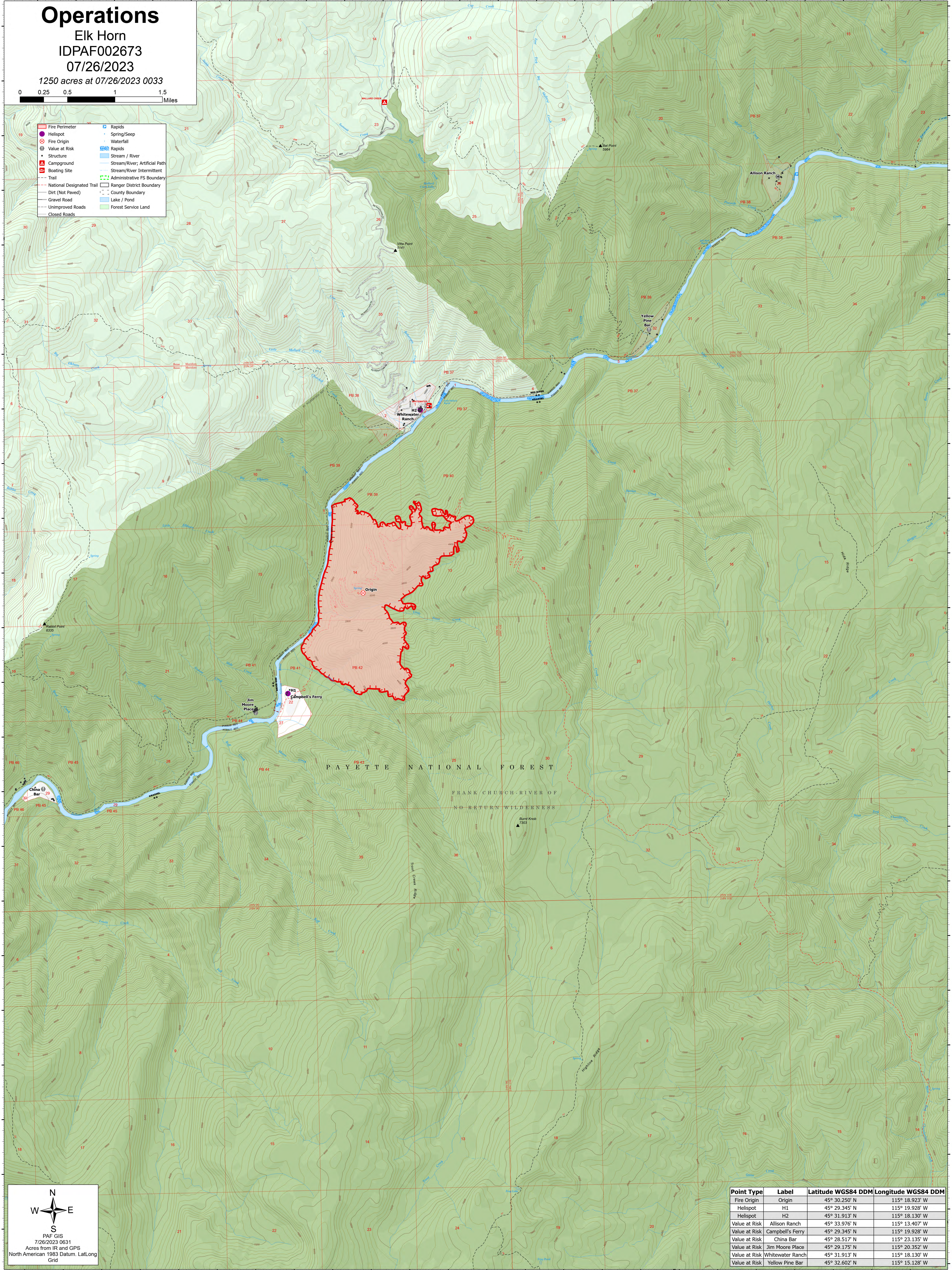
Operations

Elk Horn
IDPAF002673
07/26/2023

1250 acres at 07/26/2023 0033



- Fire Perimeter
- Fire Origin
- Value at Risk
- Structure
- Campground
- Boating Site
- Trail
- National Designated Trail
- Dirt (Not Paved)
- Gravel Road
- Unimproved Roads
- Closed Roads
- Rapids
- Spring/Seep
- Waterfall
- Rapids
- Stream / River
- Stream/River, Artificial Path
- Stream/River Intermittent
- Administrative FS Boundary
- Ranger District Boundary
- County Boundary
- Lake / Pond
- Forest Service Land



PAYETTE NATIONAL FOREST
FRANK CHURCH-RIVER OF
NORTHERN WILDERNESS



PAF GIS
7/26/2023 0631
Acres from IR and GPS
North American 1983 Datum, Lat/Long
Grid

Point Type	Label	Latitude WGS84 DDM	Longitude WGS84 DDM
Fire Origin	Origin	45° 30.250' N	115° 18.923' W
Helispot	H1	45° 29.345' N	115° 19.928' W
Helispot	H2	45° 31.913' N	115° 18.130' W
Value at Risk	Allison Ranch	45° 33.976' N	115° 13.407' W
Value at Risk	Campbell's Ferry	45° 29.345' N	115° 19.928' W
Value at Risk	China Bar	45° 28.517' N	115° 23.135' W
Value at Risk	Jim Moore Place	45° 28.175' N	115° 20.352' W
Value at Risk	Whitewater Ranch	45° 31.913' N	115° 18.130' W
Value at Risk	Yellow Pine Bar	45° 32.602' N	115° 15.128' W