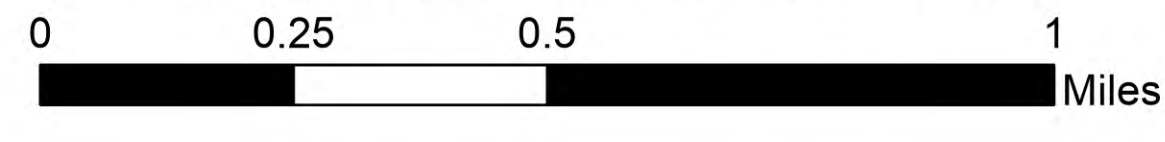


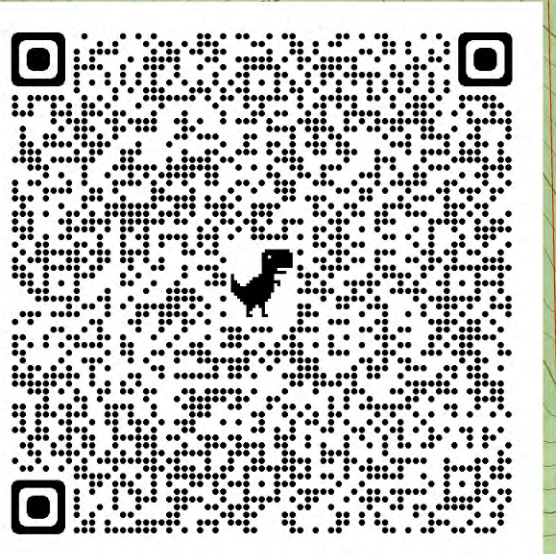
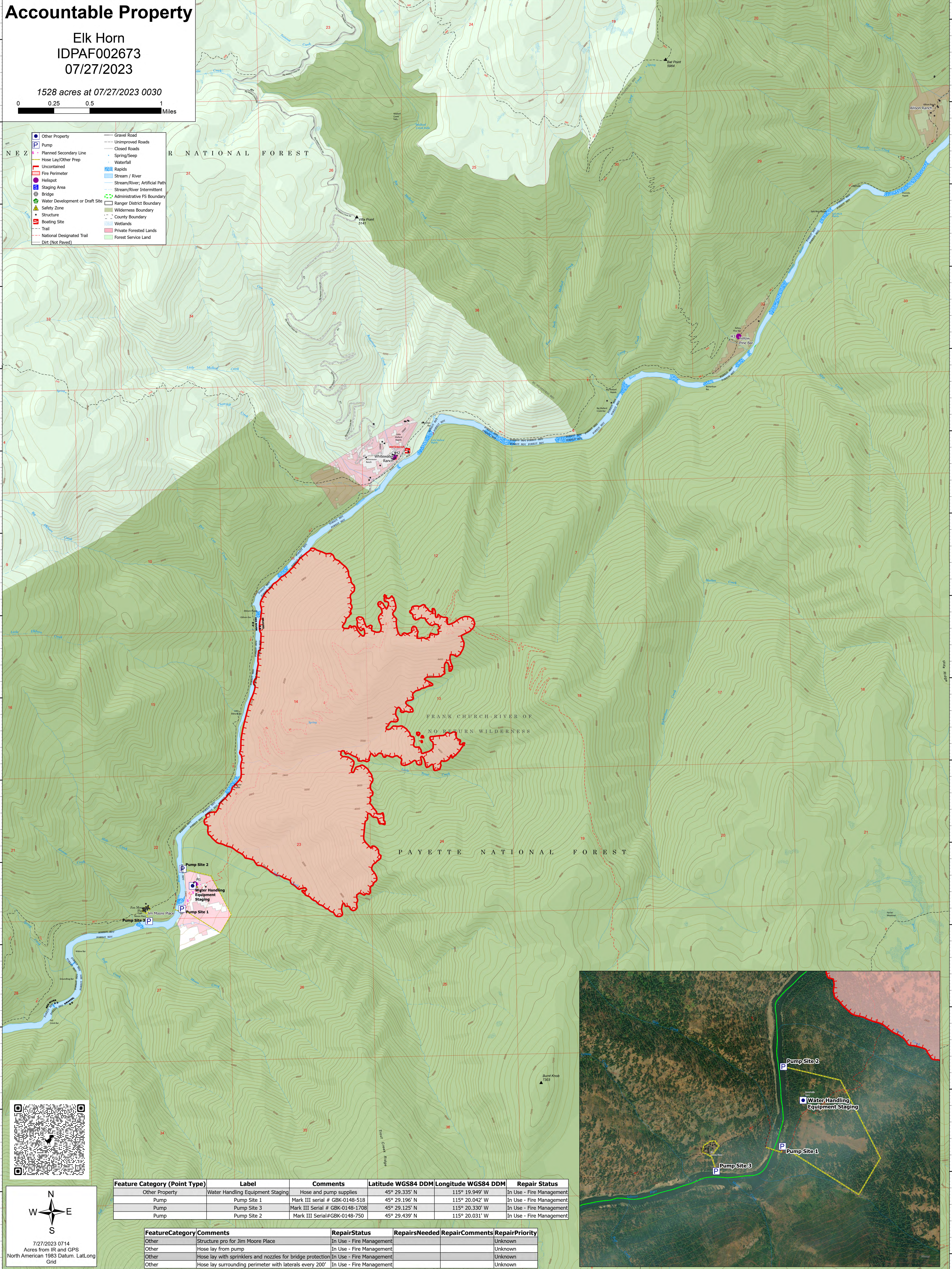
Accountable Property

Elk Horn
IDPAF002673
07/27/2023

1528 acres at 07/27/2023 0030



- Other Property
- P Pump
- Planned Secondary Line
- Hose Lay/Other Prep
- Uncontained
- Fire Perimeter
- Staging Area
- Bridge
- Water Development or Draft Site
- Safety Zone
- Structure
- Boating Site
- Trail
- National Designated Trail
- Dirt (Not Paved)
- Gravel Road
- Unimproved Roads
- Closed Roads
- Spring/Seep
- Waterfall
- Rapids
- Stream / River
- Stream/River, Artificial Path
- Stream/River Intermittent
- Administrative FS Boundary
- Ranger District Boundary
- Wilderness Boundary
- County Boundary
- Wetlands
- Private Forested Lands
- Forest Service Land



7/27/2023 0714
Acres from IR and GPS
North American 1983 Datum, Lat/Long
Grid

Feature Category (Point Type)	Label	Comments	Latitude WGS84 DDM	Longitude WGS84 DDM	Repair Status
Other Property	Water Handling Equipment Staging	Hose and pump supplies	45° 29.335' N	115° 19.949' W	In Use - Fire Management
Pump	Pump Site 1	Mark III serial # GBK-0148-518	45° 29.196' N	115° 20.042' W	In Use - Fire Management
Pump	Pump Site 3	Mark III Serial # GBK-0148-1708	45° 29.125' N	115° 20.330' W	In Use - Fire Management
Pump	Pump Site 2	Mark III Serial#GBK-0148-750	45° 29.439' N	115° 20.031' W	In Use - Fire Management

FeatureCategory	Comments	RepairStatus	RepairsNeeded	RepairComments	RepairPriority
Other	Structure pro for Jim Moore Place	In Use - Fire Management			Unknown
Other	Hose lay from pump	In Use - Fire Management			Unknown
Other	Hose lay with sprinklers and nozzles for bridge protection	In Use - Fire Management			Unknown
Other	Hose lay surrounding perimeter with laterals every 200'	In Use - Fire Management			Unknown

