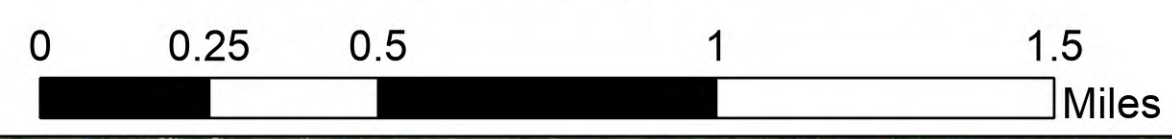


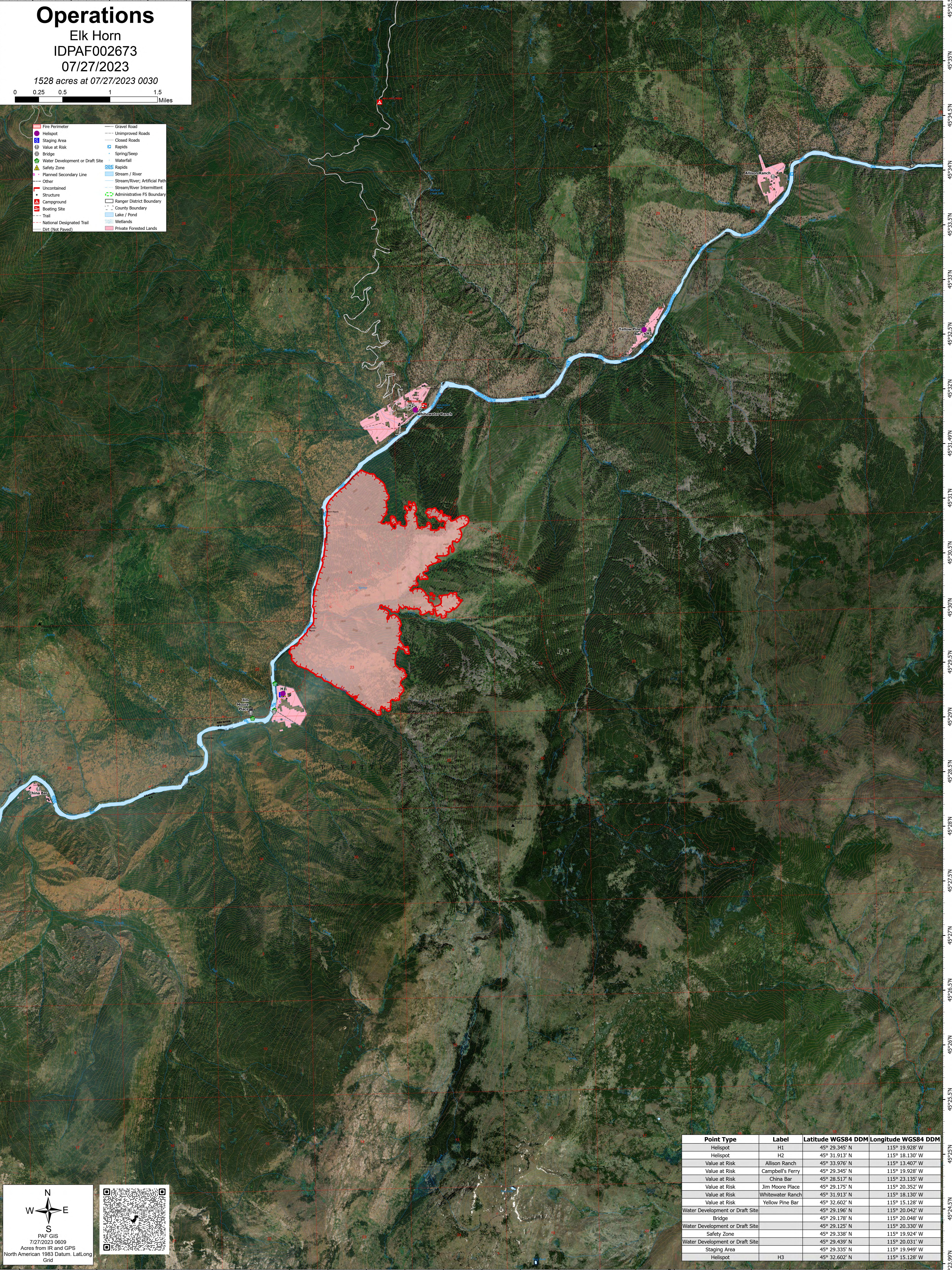
Operations

Elk Horn
IDPAF002673
07/27/2023

1528 acres at 07/27/2023 0030



- Fire Perimeter
- Helispot
- Staging Area
- Value at Risk
- Bridge
- Water Development or Draft Site
- Safety Zone
- Planned Secondary Line
- Other
- Uncontained
- Structure
- Campground
- Boating Site
- Trail
- National Designated Trail
- Dirt (Not Paved)
- Gravel Road
- Unimproved Roads
- Closed Roads
- Rapids
- Spring/Seep
- Waterfall
- Rapids
- Stream / River
- Stream/River, Artificial Path
- Stream/River, Intermittent
- Administrative FS Boundary
- Ranger District Boundary
- County Boundary
- Lake / Pond
- Wetlands
- Private Forested Lands



North arrow and metadata:
PAF GIS
7/27/2023 0609
Acres from IR and GPS
North American 1983 Datum, Lat/Long
Grid



Point Type	Label	Latitude WGS84 DDM	Longitude WGS84 DDM
Helispot	H1	45° 29.345' N	115° 19.928' W
Helispot	H2	45° 31.913' N	115° 18.130' W
Value at Risk	Allison Ranch	45° 33.976' N	115° 13.407' W
Value at Risk	Campbell's Ferry	45° 29.345' N	115° 19.928' W
Value at Risk	China Bar	45° 28.517' N	115° 23.135' W
Value at Risk	Jim Moore Place	45° 29.175' N	115° 20.352' W
Value at Risk	Whitewater Ranch	45° 31.913' N	115° 18.130' W
Value at Risk	Yellow Pine Bar	45° 32.602' N	115° 15.128' W
Water Development or Draft Site	Bridge	45° 29.196' N	115° 20.042' W
Water Development or Draft Site	Bridge	45° 29.178' N	115° 20.048' W
Water Development or Draft Site	Bridge	45° 29.125' N	115° 20.330' W
Safety Zone		45° 29.338' N	115° 19.924' W
Water Development or Draft Site		45° 29.439' N	115° 20.031' W
Staging Area		45° 29.335' N	115° 19.949' W
Helispot	H3	45° 32.602' N	115° 15.128' W