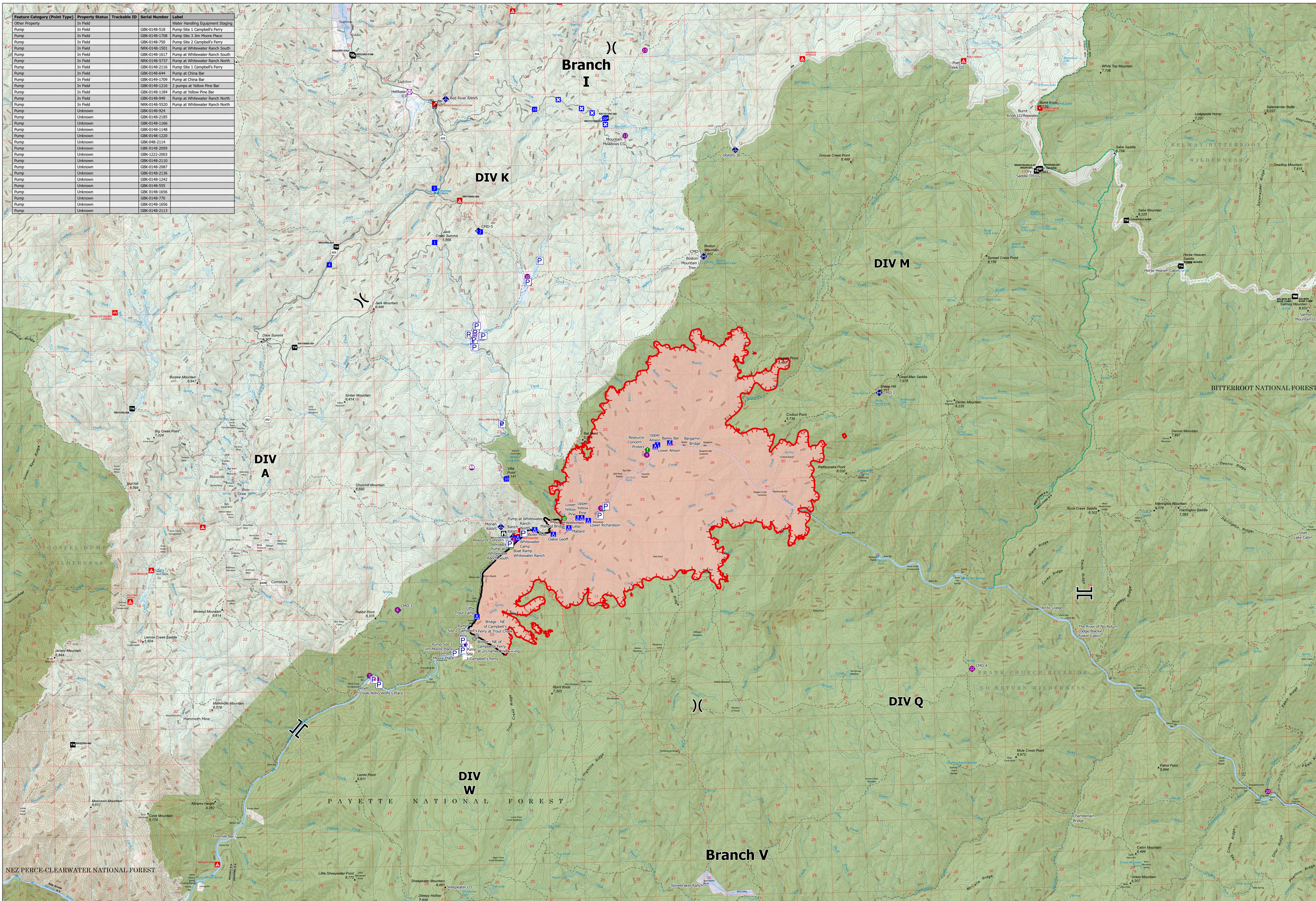


Feature Category (Point Type)	Property Status	Trackable ID	Serial Number	Label
Other Property	In Field	GBK-0148-518		Water Handling Equipment Staging
Pump	In Field	GBK-0148-1708		Pump Site 1 Campbell's Ferry
Pump	In Field	GBK-0148-750		Pump Site 2 Jim Moore Place
Pump	In Field	NRK-0148-1501		Pump at Whitewater Ranch South
Pump	In Field	GBK-0148-1617		Pump at Whitewater Ranch South
Pump	In Field	NRK-0148-5737		Pump at Whitewater Ranch North
Pump	In Field	GBK-0148-2116		Pump Site 1 Campbell's Ferry
Pump	In Field	GBK-0148-644		Pump at China Bar
Pump	In Field	GBK-0149-1709		Pump at China Bar
Pump	In Field	GBK-0148-1216		2 pumps at Yellow Pine Bar
Pump	In Field	GBK-0148-1184		Pump at Yellow Pine Bar
Pump	In Field	GBK-0148-949		Pump at Whitewater Ranch North
Pump	In Field	NRK-0148-5520		Pump at Whitewater Ranch North
Pump	Unknown	GBK-0148-924		
Pump	Unknown	GBK-0148-2185		
Pump	Unknown	GBK-0148-1166		
Pump	Unknown	GBK-0148-1148		
Pump	Unknown	GBK-0148-1220		
Pump	Unknown	GBK-048-2114		
Pump	Unknown	GBK-0148-2059		
Pump	Unknown	GBK-1222-2003		
Pump	Unknown	GBK-0148-2110		
Pump	Unknown	GBK-0148-2087		
Pump	Unknown	GBK-0148-2136		
Pump	Unknown	GBK-0148-1242		
Pump	Unknown	GBK-0148-555		
Pump	Unknown	GBK-0148-1656		
Pump	Unknown	GBK-0148-770		
Pump	Unknown	GBK-0148-1656		
Pump	Unknown	GBK-0148-2113		



Accountable Prop.
 Elkhorn
 IDPAF002673
 8/12/2023
 25,966 acres at 08/11/2023



N
 PAF GIS
 8/12/2023 0609
 PCS: NAD 1983 UTM Zone 11N
 North American 1983 Datum, LatLong Grid
 0 1 2 3 Miles

- Other Property
- Pump
- Helispot
- Helibase
- Sling Site
- Division Break
- Branch Break
- Incident Command Post
- Drop Point
- Closure
- Camp
- Staging Area
- Lookout
- Bridge
- Water Development or Draft Site
- Resource Location
- Mobile Weather Unit
- Repeater
- Contained Fireline
- Uncontained Fireline
- Fire Perimeter