

**Elkhorn Fire Strategy**

**WFDS:**  
The strategies for the Elkhorn Fire are point protection and confine/contain to protect values at private property, FS administrative sites and high value infrastructure along the Main Salmon River Corridor and in the Salmon River Breaks area.

**Strategic Risk Analysis:**  
SA\_1\_DV A & DV K: Overall strategy is confine/contain. Specific strategic actions include constructing indirect handline from Whitewater Ranch north to Dixie Fire. Extend from Dixie Fire north with mixed mechanical indirect line construction. Strategic actions address MAPs 7, 9 and 17 to protect values at risk.

SA\_2\_DV M: Overall all strategy is point protection. Specific strategic actions include prepping identified values along the Magruder Corridor as needed. MAPs addressed by strategic actions include 8, 10, 11, 12 and 13.

SA\_3\_DV Q & DV W: Overall strategy is point protection for values at risk along the Salmon River Corridor. Specific strategic actions include setting up necessary structure protection equipment to protect values at risk. Continue communication & coordination of recreation/outfitter river users. Strategic actions address MAPs 1, 3, 4 and 14.

**MAP 1 - China Rhett/Fvemile**

**Condition:** Fire reaches MAP line with the potential to reach China/Lemhi, and Rhett Creek Bridge/Rhett Wolf in the next 48-72 hours. Description: The MAP begins at the head of Spring Creek on the north side of the Main Salmon River and travels south to cross the Main Salmon River then up Ruff Creek and into Upper Lemhi Creek.

**Values at Risk:**  
• China Bar/Leha Bar  
• Rhett Creek Bridge/Rhett Wolf Cabin  
• Fvemile Bar

**Actions:** Consider actions based on current and forecasted fire weather and behavior, the time of season and probability of a season-ending event.  
1. Consider expanding the area closure and planning area.  
2. IC to notify AA of structure protection implementation.  
3. IC/AA to update river coordination and information between forests.  
4. China Bar/Lemhi Bar structure preparation is complete and in place. Begin implementing structure protection operations.  
5. Consider placing supply order and inserting personnel into Fvemile Bar to set up structure protection.

See China Bar, Rhett, and Fvemile Bar Value at Risk Assessment documents located in the Elkhorn Incident Microsoft Teams folder: 2023\_IDPAF\_EBkHom-Documents-Situation\_Channel-Structure Protection Plans. See Accountable Property Map and Collector for water handling equipment associated with structure protection.

**Resources:** AA IC China/Lemhi/Rhett - 1 IHC or T2A Fvemile Bar - 1 WFM

**MAP 3 - Sheepeater**

**Condition:** Fire reaches MAP3 line with potential to reach Sheepeater Lookout in the next 3 to 4 days. Description: From the headwaters of Fvemile Creek, the MAP runs northwest to Lemhi Point, then east to Trout Creek, turns SE ending at Flouse Lake.

**Values at Risk:**  
• Sheepeater Lookout  
• Outhouse

**Actions:** Consider actions based on current and forecasted fire weather and behavior, the time of season and probability of a season-ending event.  
1. Consider expanding area closure.  
2. Inform Agency Administrator of evacuation and protection action.  
3. Evacuate lookout personnel.  
4. Sheepeater is a metal lookout and reporter site on a large expanse of rock crev. Assess lookout building for any structure protection needs (wooden door, firewood, etc.) Wrap outhouse.

See the Sheepeater structure protection plan documents located in Elkhorn Incident Microsoft Teams folder: 2023\_IDPAF\_EBkHom-Documents-Situation\_Channel-Structure Protection Plans.

**Resources:** AA IC T2 or T3 Helicopter/HEMG 2 PFT1 or PFT2

**MAP 4 - Chamberlain GS/Stonebreaker Ranch**

**Condition:** Fire crosses MAP line with the potential to reach Chamberlain Guard Station/Stonebreaker Ranch (belongs to Idaho Fish and Game) in the next 5-6 days. Description: The MAP begins along the Highline Trail and runs northeast to Trail Point, then turns east ending at the headwaters of Big Bear Creek.

**Values:**  
• Chamberlain Guard Station  
• Stonebreaker Ranch

**Actions:** Consider actions based on current and forecasted fire weather and behavior, the time of season and probability of a season-ending event.  
1. Notify Agency Administrator  
2. Consider strip restrictions/closures and expanding area closure  
3. Develop communication plan for Idaho Centennial Trail (ICT) hikes regarding potential trail closures.  
4. Notify Idaho Fish and Game of potential threat to Stonebreaker Ranch.  
5. Consider evacuating non-fire forest service personnel and IDPW personnel at Stonebreaker Ranch.  
7. Implement structure protection preparation on cabins, kiosks, and bridge.

See Chamberlain Guard station and Stonebreaker structure protection plans located in Elkhorn Incident Microsoft Teams folder: 2023\_IDPAF\_EBkHom-Documents-Situation\_Channel-Structure Protection Plans.

**Resources:** AA IC PIO Fixed Wing Aircraft for evacuations Chamberlain - 10 fire personnel & Stonebreaker - 10 fire personnel, 3 days

**MAP 7 - Mallard-Cook**

**Condition:** When the fire crosses the MAP and is expected to reach the ranches within 72 hours. Description: Along Forest Service Road 421 up to the Bat Point trailhead and then north up the ridge dividing Big Mallard Creek and East Fork Mallard Creek, then down Lone Park Creek to the 586 trail, then follow the 586 trail to Boston Mountain.

**Values:**  
• Mallard Creek Ranch  
• Cook Ranch

**Actions:** Consider actions based on current and forecasted fire weather and behavior, as well as the time of season and current probability of a season-ending event.  
1. Consider expanding the area closure.  
2. Communicate fire situation to Mallard and Cook Ranch residents.  
3. Inform Agency Administrator of structure protection implementation.  
4. Structure preparation is complete. Implement structure protection operations at Mallard Creek Ranch and Cook Ranch. Ensure READ is present to address any natural/cultural resource issues.

See Mallard and Cook Ranch structure protection plans located in Elkhorn Incident Microsoft Teams folder: 2023\_IDPAF\_EBkHom-Documents-Situation\_Channel-Structure Protection Plans. See Accountable Property Map and Collector for water handling equipment associated with structure protection.

**Resources:** AA IC PIO LOPR READ TFLD 2-IHC 2-T2AHK 4-T4/3 ENG 1-T1 or T2 Helicopter

**MAP 8 - Magruder**

**Condition:** The fire crosses the M.A.P. and is expected to impact values within the next 5 to 6 days. Description: This M.A.P. starts at the junction of Forest Service trails 503 and 583 and follows the 583 trail to Boston Mtn and then down the 580 trail to the east to Bagman Creek, then north up Bagman Creek until it meets Forest Service trail 589 near Blak Creek, then follow trail 589 east to its intersection with trail 575 near Upper Trilly Lake.

**Values:**  
• Magruder Corridor Infrastructure: Campgrounds, Road Signs, Upper Bagman Creek Bridge (adjacent to Post Creek CG)  
• Burnt Knob Lookout

**Actions:** Consider actions based on current and forecasted fire weather and behavior, the time of season and probability of a season-ending event.  
IC to provide notification to Nez Perce/Bitterroot AA and Recreation Staff of potential need for closure of the Magruder Road (FR468). Assess and consider road closure or area closure.  
Provide road security and post reader boards during road closures.  
Assess and implement mitigation measures or structure protection actions to structures/infrastructure along the Magruder Corridor Road 468 including but not limited to: Granite Springs CG, Mountain Meadows CG, 14 Mile Trailhead, Post Creek CG, Dry Saddle CG, and Burnt Knob historical lookout and repeater site.  
Coordinate with Resource Advisors to identify and mitigate potential impacts to archaeological or cultural values.

**Resources:** AA IC PIO LOPR LEO Road Guards Barricades/Closure Signs Structure Wrap 1-1A Module with 6 personnel

**MAP 9 - Dixie-Comstock**

**Condition:** When the fire crosses the M.A.P. and is predicted to reach the fire within 7-9 days. Description: This M.A.P. is located from where Noble creek meets Forest Service Road 421 and then follow the 421 road south to near Cow creek and Mallard creek join and then follows the Wilderness Boundary southwest until it intersects with Forest Service trail 213 and then follows the 213 trail to the Salmon River.

**Values:**  
• Dixie/Dixie Work Center  
• Comstock

**Actions:** Consider actions based on current and forecasted fire weather and behavior, time of season and probability of a season-ending event.  
1. Assess and implement structure protection or fuels mitigation options for identified values in the town of Dixie, the Comstock area, Mammoth Mine, Dixie Work Center.  
2. IC to notify AA. Consider evacuation notices for residents of Dixie/Comstock.  
3. Identify additional values within the planning area.  
4. Consider expanding area closure and planning area.

See Comstock structure protection plans located in Elkhorn Incident Microsoft Teams folder: 2023\_IDPAF\_EBkHom-Documents-Situation\_Channel-Structure Protection Plans. See Accountable Property Map and Collector for water handling equipment associated with structure protection.

Contact Aubree Chaffee, Prevention Technician, Red River RD, 208-842-2122, aubree.chaffee@idaho.gov, for the Dixie Structure Protection Plan

**Resources:** AA IC PIO LOPR LEO SOP Operations - see structure plans for details

**MAP 10 - Arctic Lodge/River of No Return Lodge/Blackie Foster Cabin/Lantz Bar**

**Condition:** Fire reaches the MAP with potential to reach Arctic Lodge and River of No Return Ranch in the next 4 days. Description: The MAP begins at the headwaters of Big Bear Creek and runs SE to the Main Salmon River crossing at Hancock Rapids traveling uplope to the SW ending at Rocky Point.

**NOTE:** Jet boat operations are contingent on visibility which may be compromised by smoke and daylight conditions. The visibility required to navigate the river safely between sites varies depending on boat operator, boat type, number of personnel on boat, water level and time of day. Be aware of changing conditions on the river corridor and confer with the boat operator ahead of time to know what level of visibility they require.

**Values at Risk:**  
• Arctic Lodge  
• River of No Return Ranch/Blackie Foster Cabin

**Actions:** Consider actions based on current and forecasted fire weather and behavior, time of season and probability of a season-ending event.  
1. Consider closing the Salmon River corridor to the public at the Com Creek boat ramp.  
2. Arctic Lodge/River of No Return Ranch Structure preparation is complete. Implement structure protection operations, which will require the insertion of personnel via jetboat. The number of personnel required for the operation should be limited to ensure the jet boat is light and can move quickly. The personnel will travel to the Arctic Lodge and River of No Return Ranch to set up pumps, then leave. The pumps will have an estimated run time of 3 hours will need to be refueled multiple times over the days ahead of the fire advance to maintain high levels of relative humidity.  
3. Lantz Bar: Implement structure protection preparation. This will include the Orchard as well as the three structures on site. The creek on site has been used in the past to successfully defend both the cabins and orchard with adequate pressure and volume utilizing gravity socks. Up to 30 sprinkler heads were simultaneously operated via this method.

See structure protection plans for these sites located in Elkhorn Incident Microsoft Teams folder: 2023\_IDPAF\_EBkHom-Documents-Situation\_Channel-Structure Protection Plans. See Accountable Property Map and Collector for water handling equipment associated with structure protection.

**NOTE:** Jetboat is the only viable option for insertion and extraction of personnel at Arctic Lodge and RONR/Blackie Foster Cabin. There are no landing zones near the sites. Logistics, unfavorable fire behavior, environmental conditions, and the judgment of resources on the ground should all be considered when deciding how often the pumps are refueled.

**Resources:** AA/IC Lantz Bar: 9 personnel, 1 day to plumb orchard and cabin Arctic Lodge/River of No Return Ranch: jet boat with operator, CRWB, 2 PFT1s

**MAP 11 - Lantz Bar Planning Area**

**Condition:** Fire crosses MAP with the potential to reach Lantz Bar in the next 4 days. Description: The MAP runs from Hamilton Point down to Hamilton Creek to the Main Salmon River and up Big Bear Creek on the south side of the river.

**Values:**  
• Lantz Bar cabins  
• Orchard

**Actions:** Consider current and forecasted fire weather and behavior, as well as the time of season and the current probability of a season-ending event.  
1. Consider expanding the planning area to include the Salmon Chaffin NF. Obtain objectives, requirements, values at risk and other relevant information from the forest for a new WFDS decision.  
2. Utilize the Salmon River Coordination and Communication Plan to discuss consideration of closing the river corridor to the public at the Com Creek boat ramp.  
3. Begin implementing structure protection operations at Lantz Bar followed by jet boat insertion. The crew conducting structure protection may consider utilizing the creek as the sole water source if it can effectively be done. This will enable resources to leave Lantz Bar earlier, building margin, as the primary escape to safety is contingent on jet boat operation. Should pumps be used and firefighters required on site to start or refuel them, the crew may consider boating out supplies and personnel not necessary for structure protection operations ahead of the fire final advance, to enable the personnel required for structure protection operation the ability to leave quickly.

See Lantz Bar structure protection plan located in Elkhorn Incident Microsoft Teams folder: 2023\_IDPAF\_EBkHom-Documents-Situation\_Channel-Structure Protection Plans. See Accountable Property Map and Collector for water handling equipment associated with structure protection.

**Resources:** AA IC 10 person WFM Jet Boat/Operator

**MAP 12 - Sweet Lake Cabin**

**Condition:** If fire appears likely to cross the MAP and is expected to impact Sweet Lake Cabin within the next 3 to 4 days. Description: The MAP begins in the 2007 Harrington Ridge, crosses Harrington Creek to the SE, and then east onto the 2007 Elkhorn Fire.

**Actions:** Consider actions based on current and forecasted fire weather and behavior, time of season and probability of a season-ending event. Consider implementing structure protection of the cabin, barn and outhouse.

**Resources:** 1-5 person module Structure wrap 2- Ladders and miscellaneous tools Structure wrap kit (can be provided by the Bitterroot NF), contact Bret Lewis @ 406-396-0407

**MAP 13 - Magruder East**

**Condition:** Fire crosses MAP or is expected to impact Road 468 (Magruder/EBJ City corridor road) within the next 5 days. Description: The MAP begins on the ridge just west of Upper Tabby Lake, travels south to along the ridge to Saddle Lake, then turns east and travels to Rang Creek point, down the ridge to Sabe Creek, south along Sabe Creek, then turns east following Hamilton Creek ending approximately one mile west of Witter Point.

**Values:**  
• Horse Heaven Cabin  
• Salmon Mtn Lookout  
• Magruder Corridor

**Actions:** Consider actions based on current and forecasted fire weather and behavior, as well as the time of season and current probability of a season-ending event.  
1. IC to provide notification to Nez Perce/Bitterroot AA and Recreation Staff of potential need for closure of the Magruder Road (FR468). Assess and consider road closure or area closure.  
2. Provide road security and post reader boards during road closures.  
3. Consider implementing protection of infrastructure at Dry Saddle CG, Sabe Saddle, Sabe Vista and miscellaneous signs along the corridor.  
4. Consider implementing structure protection of the infrastructure at Horse Heaven Cabin and Salmon Mtn Lookout.  
5. Coordinate with Resource Advisors to identify and mitigate potential impacts to archaeological or cultural values.

**Resources:** Magruder Corridor Road (FR468) - AA, IC, LOPR PIO Road Guards Barricades/Closure Signs, Structure Wrap 1-1A Module with 3 personnel Horse Heaven Cabin - 1-5 person module Structure wrap kit (Can be provided by the Bitterroot NF), contact Bret Lewis, AFMO @ 406-396-0407 2 Ladders and miscellaneous tools

**MAP 14 - Chamberlain Bridge**

**Condition:** Fire reaches MAP and has the potential to reach Chamberlain Bridge in 5 days. Description: The MAP begins at the Main Salmon River following the Arctic Creek drainage south to the 2017 Highline Fire.

**Values:**  
• Chamberlain Bridge

**Actions:** Consider actions based on current and forecasted fire weather and behavior, time of season and probability of a season-ending event.  
1. Consider expanding fire area closure.  
2. Consider expanding WFDS planning area.  
3. Implement bridge structure protection. It will take two days to insert personnel, wrap bridge, and take out to Root Ranch for pickup.

See bridge description document located in Elkhorn Incident Microsoft Teams folder: 2023\_IDPAF\_EBkHom-Documents-Situation\_Channel-Structure Protection Plans.

**Resources:** AAA fire closure, WFDS planning area change. Bridge Protection - Plan for 2 full days to complete this mission. Accessible only by tupper. 4 Rappers Structure Wrap (4 rolls) Demole: Hike to Root Ranch (approximately 11 miles), helicopter pickup at Root Ranch. This is a private inholding and approval must be obtained for landing here. Contact Tammy Overacker, flingover@idaho.com, 208-756-6295, cell 208-940-0141.

**MAP 17 - Whitewater**

**Condition:** The fire crosses the MAP or threatens access to Whitewater Ranch via the 421 Big Mallard Creek Road. Description: The MAP begins at the confluence of the Main Fork of Big Mallard Creek and the Main Salmon River and travels north up the Big Mallard Creek drainage.

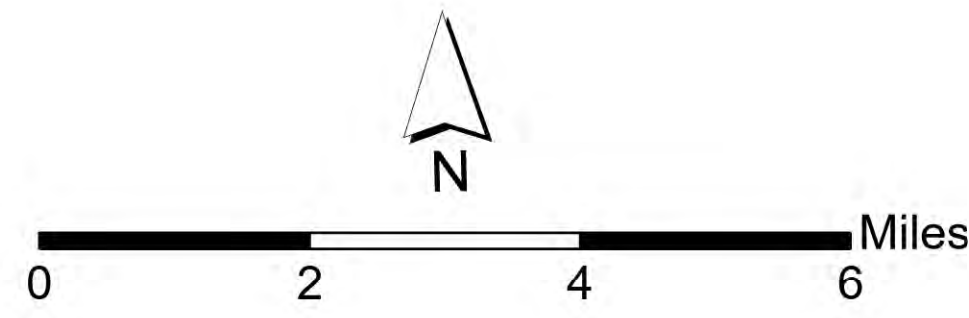
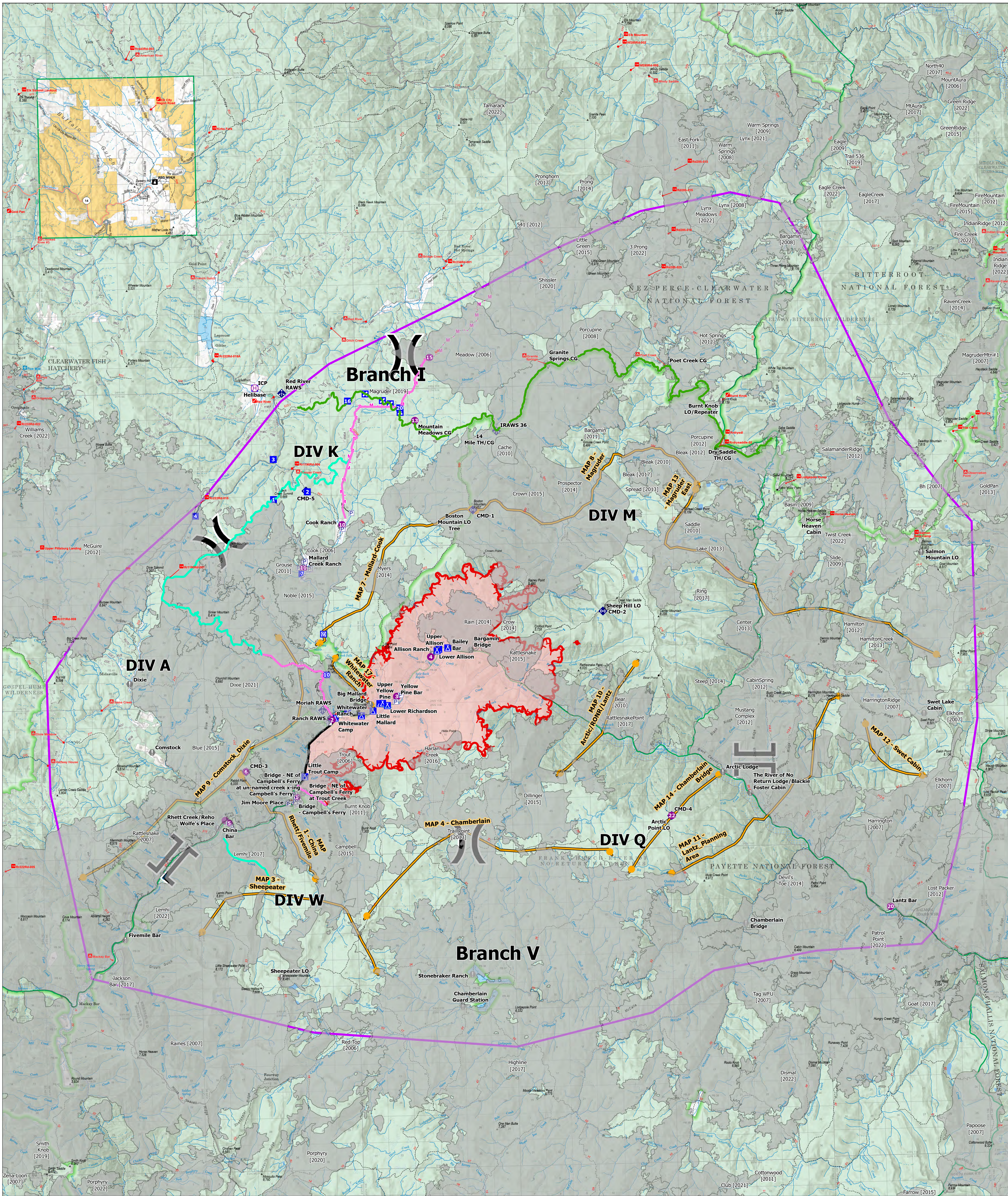
**Values:**  
• Whitewater Wilderness Ranch  
• 421 Road containment line

**Actions:** Consider actions based on current and forecasted fire weather and behavior, time of season and probability of a season-ending event.  
Structure preparation is complete.  
1. Insert personnel into Whitewater Ranch to implement structure protection operations.  
2. Consider firing operations utilizing 421 road/handline to protect Whitewater Ranch and keep fire east of containment lines.

See structure protection plans for Whitewater Wilderness Ranch located in Elkhorn Incident Microsoft Teams folder: 2023\_IDPAF\_EBkHom-Documents-Situation\_Channel-Structure Protection Plans.

See Accountable Property Map and Collector for water handling equipment associated with structure protection.

**Resources:** Structure Protection: WFM1 or T2A crew Firing Operation: 4 IHC or 4 T2AHC



Magruder Rd	Other Property	Branch Break	Bridge	Planned Road as Line	Wildfire Daily Fire Perimeter
PACE	Pump	Incident Command Post	Mobile Weather Unit	Access or Improved Road	Pending Planning Area
Alternate	Helispot	Drop Point	Repeater	Management Action Point	
Primary	Helibase	Closure	Completed Hand Line	Other	
	Sling Site	Camp	Completed Road as Line	Contained	
	Division Break	Value at Risk	Planned Mixed Construction Line	Uncontained	