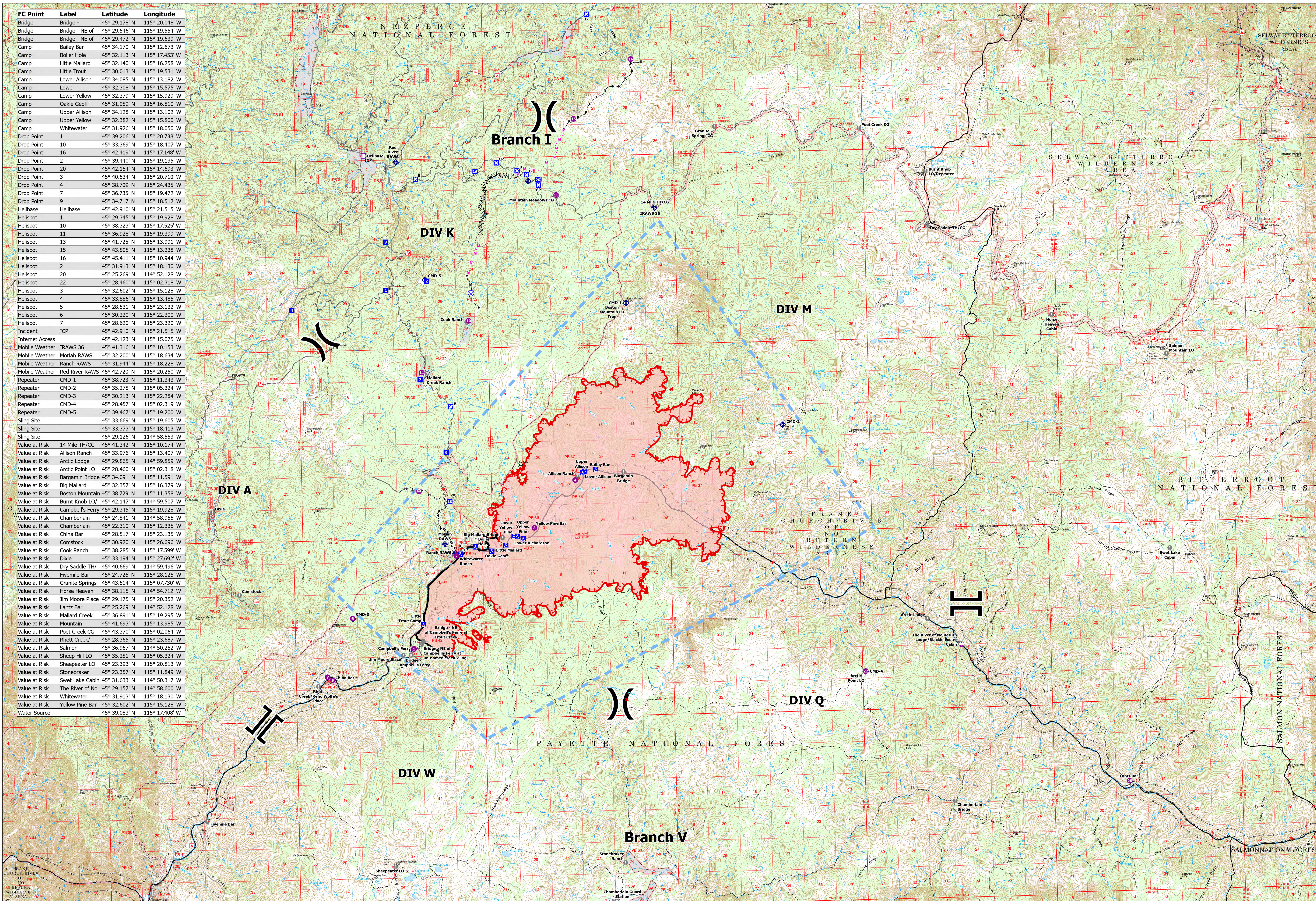
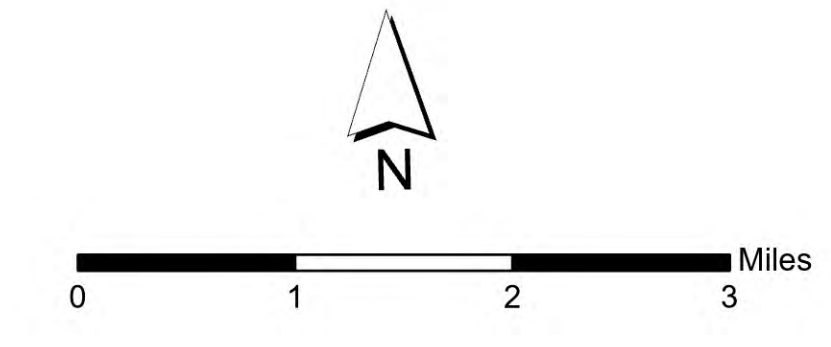


FC Point	Label	Latitude	Longitude
Bridge	Bridge -	45° 29.178' N	115° 20.048' W
Bridge	Bridge - NE of	45° 29.546' N	115° 19.554' W
Bridge	Bridge - NE of	45° 29.472' N	115° 19.639' W
Camp	Bailey Bar	45° 34.170' N	115° 12.673' W
Camp	Boiler Hole	45° 32.113' N	115° 17.453' W
Camp	Little Mallard	45° 32.140' N	115° 16.258' W
Camp	Little Trout	45° 30.013' N	115° 19.531' W
Camp	Lower Allison	45° 34.085' N	115° 13.182' W
Camp	Lower	45° 32.308' N	115° 15.575' W
Camp	Lower Yellow	45° 32.379' N	115° 15.929' W
Camp	Oakie Geoff	45° 31.989' N	115° 16.810' W
Camp	Upper Allison	45° 34.128' N	115° 13.102' W
Camp	Upper Yellow	45° 32.382' N	115° 15.800' W
Camp	Whitewater	45° 31.926' N	115° 18.050' W
Drop Point	1	45° 39.206' N	115° 20.738' W
Drop Point	10	45° 33.369' N	115° 18.407' W
Drop Point	16	45° 42.419' N	115° 17.148' W
Drop Point	2	45° 39.440' N	115° 19.135' W
Drop Point	20	45° 42.154' N	115° 14.693' W
Drop Point	3	45° 40.534' N	115° 20.710' W
Drop Point	4	45° 38.709' N	115° 24.435' W
Drop Point	7	45° 36.735' N	115° 19.472' W
Drop Point	9	45° 34.717' N	115° 18.512' W
Helibase	Helibase	45° 42.910' N	115° 21.515' W
Helispot	1	45° 29.345' N	115° 19.928' W
Helispot	10	45° 38.323' N	115° 17.525' W
Helispot	11	45° 36.928' N	115° 19.399' W
Helispot	13	45° 41.725' N	115° 13.991' W
Helispot	15	45° 43.805' N	115° 13.238' W
Helispot	16	45° 45.411' N	115° 10.944' W
Helispot	2	45° 31.913' N	115° 18.130' W
Helispot	20	45° 25.269' N	114° 52.128' W
Helispot	22	45° 28.460' N	115° 02.318' W
Helispot	3	45° 32.602' N	115° 15.128' W
Helispot	4	45° 33.886' N	115° 13.485' W
Helispot	5	45° 28.531' N	115° 23.132' W
Helispot	6	45° 30.220' N	115° 22.300' W
Helispot	7	45° 28.620' N	115° 23.320' W
Incident	ICP	45° 42.910' N	115° 21.515' W
Internet Access		45° 42.123' N	115° 15.075' W
Mobile Weather	IRAWS 36	45° 41.316' N	115° 10.153' W
Mobile Weather	Moriah RAWs	45° 32.200' N	115° 18.634' W
Mobile Weather	Ranch RAWs	45° 31.944' N	115° 18.228' W
Mobile Weather	Red River RAWs	45° 42.720' N	115° 20.250' W
Repeater	CMD-1	45° 38.723' N	115° 11.343' W
Repeater	CMD-2	45° 35.278' N	115° 05.324' W
Repeater	CMD-3	45° 30.213' N	115° 22.284' W
Repeater	CMD-4	45° 28.457' N	115° 02.319' W
Repeater	CMD-5	45° 39.467' N	115° 19.200' W
Sling Site		45° 33.669' N	115° 19.605' W
Sling Site		45° 33.373' N	115° 18.413' W
Sling Site		45° 29.126' N	114° 58.553' W
Value at Risk	14 Mile TH/CG	45° 41.342' N	115° 10.174' W
Value at Risk	Allison Ranch	45° 33.976' N	115° 13.407' W
Value at Risk	Arctic Lodge	45° 29.865' N	114° 59.859' W
Value at Risk	Arctic Point LO	45° 28.460' N	115° 02.318' W
Value at Risk	Bargamin Bridge	45° 34.091' N	115° 11.591' W
Value at Risk	Big Mallard	45° 32.357' N	115° 16.379' W
Value at Risk	Boston Mountain	45° 38.729' N	115° 11.358' W
Value at Risk	Burnt Knob LO	45° 42.147' N	114° 59.507' W
Value at Risk	Campbell's Ferry	45° 29.345' N	115° 19.928' W
Value at Risk	Chamberlain	45° 24.841' N	114° 58.955' W
Value at Risk	Chamberlain	45° 22.310' N	115° 12.335' W
Value at Risk	China Bar	45° 28.517' N	115° 23.135' W
Value at Risk	Comstock	45° 30.920' N	115° 26.696' W
Value at Risk	Cook Ranch	45° 38.285' N	115° 17.599' W
Value at Risk	Dixie	45° 33.194' N	115° 27.692' W
Value at Risk	Dry Saddle TH	45° 40.669' N	114° 59.496' W
Value at Risk	Fivemile Bar	45° 24.726' N	115° 28.125' W
Value at Risk	Granite Springs	45° 43.514' N	115° 07.730' W
Value at Risk	Horse Heaven	45° 38.115' N	114° 54.712' W
Value at Risk	Jim Moore Place	45° 29.175' N	115° 20.352' W
Value at Risk	Lantz Bar	45° 25.269' N	114° 52.128' W
Value at Risk	Mallard Creek	45° 36.891' N	115° 19.295' W
Value at Risk	Mountain	45° 41.693' N	115° 13.985' W
Value at Risk	Poet Creek CG	45° 43.370' N	115° 02.064' W
Value at Risk	Rhett Creek	45° 28.365' N	115° 23.687' W
Value at Risk	Salmon	45° 36.967' N	114° 50.252' W
Value at Risk	Sheep Hill LO	45° 35.281' N	115° 05.324' W
Value at Risk	Sheepsteer LO	45° 23.393' N	115° 20.813' W
Value at Risk	Stonebraker	45° 23.357' N	115° 11.849' W
Value at Risk	Sweet Lake Cabin	45° 31.633' N	114° 50.317' W
Value at Risk	The River of No	45° 29.157' N	114° 58.600' W
Value at Risk	Whitewater	45° 31.913' N	115° 18.130' W
Value at Risk	Yellow Pine Bar	45° 32.602' N	115° 15.128' W
Water Source		45° 39.083' N	115° 17.408' W



Operations
 Elkhorn
 IDPAF002673
 26,048 Acres
 8/18/2023



- X Division Break
- Incident Command Post
- ◆ Internet Access
- Completed Road as Line
- X Branch Break
- Drop Point
- ◆ Repeater
- Planned Mixed Construction Line
- Closure
- Camp
- ◆ Water Source
- Access or Improved Road
- Helispot
- Value at Risk
- ▲ Completed Fuel Break
- Other
- Helibase
- Bridge
- Completed Hand Line
- Temporary Flight Restriction
- Sling Site
- ◆ Mobile Weather Unit
- Completed Mixed Construction Line
- Contained
- Uncontained
- Wildfire Daily Fire Perimeter