

Elkhorn Fire Strategy

WFDS:

The strategies for the Elk Horn Fire are point protection and confine/contain to protect values at private property, PS administrative sites and high value infrastructure along the Main Salmon River Corridor and in the Salmon River Basins area.

Strategic Risk Analysis

SA_1 DIV A & DIV K: Overall strategy is confine/contain. Specific strategic actions include constructing indirect handline from Whitewater Ranch north to Dixie Fire. Extend from Dixie Fire north with raised mechanical indirect line construction. Strategic actions address MAPs 7, 9 and 17 to protect values at risk.

SA_2 DIV M: Overall strategy is point protection. Specific strategic actions include prepping identified values at the Magruder Corridor as needed. MAPs addressed by strategic actions include 8, 10, 11, 12 and 13.

SA_3 DIV Q & DIV W: Overall strategy is point protection for values at risk along the Salmon River Corridor. Specific strategic actions include setting up necessary structure protection equipment to protect values at risk. Continue communication & coordination of recreation/outfitter river users.

MAP 1 - China Rhett/Fivemile

Condition: Fire reaches MAP line with the potential to reach China/Lenhä, and Rhett Creek Bridge/Rebo Wolfe in the next 48-72 hours.
Description: The MAP begins at the head of Spring Creek on the north side of the Main Salmon River and travels south to cross the Main Salmon River then up Ruff Creek and into Upper Lemhi Creek.

- Values at Risk:**
- China Bar/Lenhä Bar
 - Rhett Creek Bridge/Rebo Wolfe Cabins
 - Fivemile Bar

Action: Consider actions based on current and forecasted fire weather and behavior, the time of season and probability of a season-ending event.
1. Consider expanding the area closure and planning area.
2. IC to notify AA of structure protection implementation.
3. IC/AA to update river coordination and information between forests.
4. China Bar/Lenhä Bar/Rhett/Rebo structure preparation is complete and in place. Begin implementing structure protection operations.
5. Consider placing supply order and inserting personnel into Fivemile Bar to set up structure protection.

Note: As river levels decrease over the season, jet boats used for transport will be of smaller size. Ingress/egress transport of personnel and equipment will take more time and more trips. Also, poor visibility resulting from smoke in the river canyon will impact the availability of jet boats to transport up and down the river.

See China Bar, Rhett, and Fivemile Bar Value at Risk Assessment documents located in the Elkhorn Incident Microsoft Teams folder: 2023_IDPAF_ElkHorn>Documents>Situation_Channel>Structure Protection Plans.
See Accountable Property Map and Collector for water handling equipment associated with structure protection.

Resources: AA IC China/Lenhä/Rhett - 1 IHC or T2/A Fivemile Bar - 1 WFM

MAP 3 - Sheepcater

Condition: Fire reaches MAP3 line with potential to reach Sheepcater Lookout in the next 3 to 4 days. Description: From the headwaters of Fivemile Creek, the MAP runs northwest to Lenhä Point, then east to Trout Creek, turns SE ending at Fivemile Lake.

- Values at Risk:**
- Sheepcater Lookout
 - Outhouse

Action: Consider actions based on current and forecasted fire weather and behavior, the time of season and probability of a season-ending event.
1. Consider expanding area closure.
2. Inform Agency Administrator of evacuation and protection action.
3. Evacuate lookout personnel.
4. Sheepcater is a rural lookout and repeater site on a large expanse of rock scree. Assess lookout building for any structure protection needs (wooden door, firewood, etc.). Wrap outhouse.

See the Sheepcater structure protection plan documents located in Elkhorn Incident Microsoft Teams folder: 2023_IDPAF_ElkHorn>Documents>Situation_Channel>Structure Protection Plans.

Resources: AA IC T2 or T3 Helicopter/HEMR 2 PFTI or F2T2

MAP 4 - Chamberlain GS/Stonbreaker Ranch

Condition: Fire crosses MAP line with the potential to reach Chamberlain Guard Station/Stonbreaker Ranch (belongs to Idaho Fish and Game) in the next 5-6 days. Description: The MAP begins along the Highline Trail and runs northeast to Trail Point, then turns east ending at the headwaters of Big Bear Creek.

- Values:**
- Chamberlain Guard Station
 - Stonbreaker Ranch

Action: Consider actions based on current and forecasted fire weather and behavior, the time of season and probability of a season-ending event.
1. Consider expanding area closure.
2. Notify Agency Administrator
3. Consider airstrip restrictions/closure and expanding area closure
4. Develop communication plan for Idaho Centennial Trail (ICT) hikers regarding potential trail closures.
5. Notify Idaho Fish and Game of potential threat to Stonbreaker Ranch.
6. Consider evacuating non-fire forest service personnel and IDPW personnel at Stonbreaker Ranch.
7. Implement structure protection preparation on cabins, kiosks, and bridge.

See Chamberlain Guard Station and Stonbreaker Ranch structure protection plans located in Elkhorn Incident Microsoft Teams folder: 2023_IDPAF_ElkHorn>Documents>Situation_Channel>Structure Protection Plans.

Resources: AA IC PIO Fixed Wing Aircraft for evacuations Chamberlain - 10 fire personnel & Stonbreaker - 10 fire personnel, 3 days

MAP 7 - Mallard-Cook

Condition: When the fire crosses the MAP and is expected to reach the ranches within 72 hours. Description: Along Forest Service Road 421 up to the Bat Point trailhead and then north up the ridge dividing Big Mallard Creek and East Fork Mallard Creek, then down Lone Park Creek to the S86 trail, then follow the S86 trail to Borston Mountain.

- Values:**
- Mallard Creek Ranch
 - Cook Ranch

Action: Consider actions based on current and forecasted fire weather and behavior, as well as the time of season and current probability of a season-ending event.
1. Consider expanding the area closure.
2. Communicate fire situation to Mallard and Cook Ranch residents.
3. Inform Agency Administrator of structure protection implementation.
4. Structure preparation is complete. Implement structure protection operations at Mallard Creek Ranch and Cook Ranch. Ensure READ is present to address any natural/cultural resource issues.
5. Consider implementing fire protection. See Elkhorn Branch I Firing Plan.

See Mallard and Cook Ranch structure protection plans located in Elkhorn Incident Microsoft Teams folder: 2023_IDPAF_ElkHorn>Documents>Situation_Channel>Structure Protection Plans.
See Accountable Property Map and Collector for water handling equipment associated with structure protection.

Resources: AA IC PIO LOPR READ TFLD 2 - IHC 2 - T2/AHC 4 - T4/3/ENG 1 - T1 or T2 Helicopter

MAP 8 - Magruder

Condition: The fire crosses the M.A.P. and is expected to impact values within the next 5 to 6 days.
Description: This M.A.P. is located from where Noble creek meets Forest Service trail 421 and then follows the 421 road south to meet Cow creek and Mallard creek pan and then follows the Widemess Boundary southwesterly until it intersects with Forest Service trail 213 and then follows the 213 trail to the Salmon River.

- Values:**
- Magruder Corridor Infrastructure: Campgrounds, Road Signs, Upper Bargamin Creek Bridge (adjacent to Post Creek CG)
 - Burnt Knob Lookout

Action: Consider actions based on current and forecasted fire weather and behavior, the time of season and probability of a season-ending event.

IC to provide notification to Nez Perce/Bitterroot AA and Recreation Staff of potential need for closure of the Magruder Road (FR468). Assess and consider road closure or area closure.
Provide road security and post reader boards during road closures.
Assess and implement mitigation measures to structure protection actions to structures/infrastructure along the Magruder Corridor Road 468 including but not limited to: Granite Springs CG, Mountain Meadows CG, 14 Mile Trailhead, Post Creek CG, Dry Saddle CG, and Burnt Knob Historical lookout and repeater site.
Coordinate with Resource Advisors to identify and mitigate potential impacts to archaeological or cultural values.

Resources: AA IC PIO LOPR LEO Road Guards Barricades/Closure Signs Structure Wrap 1 - IA Module with 6 personnel

MAP 9 - Dixie-Comstock

Condition: When the fire crosses the M.A.P. and is predicted to reach the fire within 7-9 days.
Description: This M.A.P. is located from where Noble creek meets Forest Service trail 421 and then follows the 421 road south to meet Cow creek and Mallard creek pan and then follows the Widemess Boundary southwesterly until it intersects with Forest Service trail 213 and then follows the 213 trail to the Salmon River.

- Values:**
- Dixie/Dixie Work Center
 - Comstock

Action: Consider actions based on current and forecasted fire weather and behavior, time of season and probability of a season-ending event.

1. Assess and implement structure protection or fuel mitigation options for identified values in the town of Dixie, the Comstock area, Mammoth Mine, Dixie Work Center.
2. IC to notify AA. Consider evacuation notices for residents of Dixie-Comstock.
3. Identify additional values within the planning area.
4. Consider expanding area closure and planning area.

See Comstock structure protection plans located in Elkhorn Incident Microsoft Teams folder: 2023_IDPAF_ElkHorn>Documents>Situation_Channel>Structure Protection Plans.
See Accountable Property Map and Collector for water handling equipment associated with structure protection.

Contact Aubree Chaffee, Prevention Technician, Red River RD, 208-842-2122. Aubree.chaffee@idaho.gov, for the Dixie Structure Protection Plan

Resources: AA IC PIO LOPR LEO SOP Operations - see structure plans for details

MAP 10 - Arctic Lodge/River of No Return Lodge/Blackie Foster Cabin/Lantz Bar

Condition: Fire reaches the MAP with potential to reach Arctic Lodge and River of No Return Ranch in the next 4 days. Description: The MAP begins at the headwaters of Big Bear Creek and runs SE to the Main Salmon River crossing at Hancock Rapids traveling uplope to the SW ending at Rocky Point.

- Values at Risk:**
- Arctic Lodge
 - River of No Return Ranch/Blackie Foster Cabin

Action: Consider actions based on current and forecasted fire weather and behavior, time of season and probability of a season-ending event.
1. Arctic Lodge/River of No Return Ranch: Structure preparation is complete. Implement structure protection operations, which will require the insertion of personnel via jetboat. The number of personnel required for the operation should be limited to ensure the jet boat is light and can move quickly. The personnel will move to the Arctic Lodge and River of No Return Ranch to set pumps, then leave. The pumps with an estimated run time of 3 hours will need to be refueled multiple times over the days ahead of the fire advance to maintain high levels of relative humidity.
2. Lantz Bar: Implement structure protection preparation. This shall include the Orchard as well as the three structures on site. The creek on site has been utilized in the past to successfully defend both the cabins and orchard with adequate pressure and volume utilizing gravity socks. Up to 30 snorkel leads were successfully operated via this method.
3. Utilize the Salmon River Coordination and Communication Plan to discuss consideration of closing the river corridor to the public at the Com Creek boat ramp. Consider the safety of the PICO/READs located on the river and possibly moving them to a different location upriver.

See structure protection plans for these sites located in Elkhorn Incident Microsoft Teams folder: 2023_IDPAF_ElkHorn>Documents>Situation_Channel>Structure Protection Plans.
See Accountable Property Map and Collector for water handling equipment associated with structure protection.
NOTE: Jetboat is the only viable option for insertion and extraction of personnel at Arctic Lodge and RONR/Blackie Foster Cabin. There are no landing zones near the sites. Logistics, unobstructed fire behavior, environmental conditions, and the judgment of resources on the ground should all be considered when deciding how often the pumps are refueled.

Resources: AA/IC Lantz Bar 9 personnel, 1 day to planch orchard and cabin Arctic Lodge/River of No Return Ranch jet boat with operator, CRWB, 2 PFTIs.

MAP 11 - Lantz Bar Planning Area

Condition: Fire crosses MAP with the potential to reach Lantz Bar in the next 4 days. Description: The MAP runs from Hamilton Point down to Hamiltons Creek to the Main Salmon River and up Big Bear Creek on the south side of the river.

- Values:**
- Lantz Bar cabins
 - Orchard

Action: Consider current and forecasted fire weather and behavior, as well as the time of season and the current probability of a season-ending event.
1. Consider expanding the planning area to include the Salmon Challi NF. Obtain objectives, requirements, values at risk and other relevant information from the forest for a new WFDS decision.
2. Utilize the Salmon River Coordination and Communication Plan to discuss consideration of closing the river corridor to the public at the Com Creek boat ramp. Consider the safety of the PICO/READs located on the river and possibly moving them to a different location upriver.
3. Begin implementing structure protection operations at Lantz Bar followed by jet boat insertion. The crew conducting structure protection may consider utilizing the creek as the side water source if it can effectively be done. This will enable resources to leave Lantz Bar earlier, building a margin, as the primary escape to safety is contingent on jet boat operation. Should pumps be used and firefighters required on site to start or refuel them, the crew may consider boating out supplies and personnel not necessary for structure protection operations ahead of the fires final advance; to enable the personnel required for structure protection operation the ability to leave quickly.

See Lantz Bar structure protection plan located in Elkhorn Incident Microsoft Teams folder: 2023_IDPAF_ElkHorn>Documents>Situation_Channel>Structure Protection Plans.
See Accountable Property Map and Collector for water handling equipment associated with structure protection.

Resources: AA IC 10 person WFM Jet Boat/Operator

MAP 12 - Sweet Lake Cabin

Condition: If fire appears likely to cross the MAP and is expected to impact Sweet Lake Cabin within the next 3 to 4 days. Description: The MAP begins in the 2007 Harrington Ridge Fire, crosses Harrington Creek to the SE, and then east into the 2007 Elkhorn Fire.

Action: Consider actions based on current and forecasted fire weather and behavior, time of season and probability of a season-ending event. Consider implementing structure protection of the cabin, barn and outhouse.
Resources: 1 - 5 person module Structure wrap 2 - Ladders and miscellaneous tools Structure wrap kit (can be provided by the Bitterroot NF), contact Bret Lewis @ 406-396-0407

MAP 13 - Magruder East

Condition: Fire crosses MAP or is expected to impact Road 468 (Magruder/Elk City corridor road) within the next 5 days. Description: The MAP begins on the ridge just west of Upper Tibby Lake, travels south to along the ridge to Saddle Lake, then turns east and travels to Ring Creek point, down the ridge to Sabe Creek, south along Sabe Creek, then turns east following Hamilton Creek ending approximately one mile west of Witter Point.

- Values:**
- Horse Heaven Cabin
 - Salmon Mtn Lookout
 - Magruder Corridor

Action: 1. IC to provide notification to Nez Perce/Bitterroot AA and Recreation Staff of potential need for closure of the Magruder Road (FR468). Assess and consider road closure or area closure.
2. Provide road security and post reader boards during road closures.
3. Consider implementing protection of infrastructure at Dry Saddle CG, Sabe Saddle, Sabe Vista and miscellaneous signs along the corridor.
4. Consider implementing structure protection of the infrastructure at Horse Heaven Cabin and Salmon Mtn Lookout.
5. Coordinate with Resource Advisors to identify and mitigate potential impacts to archaeological or cultural values.

Resources: Magruder Corridor Road (FR468) - AA, IC, LOPR PIO Road Guards Barricades/Closure Signs, Structure Wrap 1 - IA Module with 3 personnel Horse Heaven Cabin - 1 - 5 person module Structure wrap kit (Can be provided by the Bitterroot NF), contact Bret Lewis, AFMO @ 406-396-0407 - 2 Ladders and miscellaneous tools Salmon Mtn Lookout - 1 Regional Structure Wrap Module, order through CBCC or contact John Wallace, Program Manager, @208-781-2596, john.wallace@ndcg.gov Structure wrap kit (Can be provided by the Bitterroot NF), Contact Bret Lewis AFMO @ 406-396-0407 2 Ladders and miscellaneous tools Fall protection equipment

MAP 14 - Chamberlain Bridge

Condition: Fire reaches MAP and has the potential to reach Chamberlain Bridge in 5 days. Description: The MAP begins at the Main Salmon River following the Arctic Creek drainage south to the 2017 Highline Fire.

- Values:**
- Chamberlain Bridge

Action: 1. Consider expanding fire area closure.
2. Consider expanding WFDS planning area.
3. Implement bridge structure protection. It will take two days to insert personnel, wrap bridge, and take out to Root Ranch for pickup.

See bridge description document located in Elkhorn Incident Microsoft Teams folder: 2023_IDPAF_ElkHorn>Documents>Situation_Channel>Structure Protection Plans.
Resources: AA fire closure, WFDS planning area charge.

Bridge Protection - Plan for 2 full days to complete this mission. Accessible only by rappel.
4 Rappelists Structure Wrap (4 rolls)
Denote: Hike to Root Ranch (approximately 11 miles), helicopter pickup at Root Ranch. This is a private inhaling and approval must be obtained for landing here. Contact Tanny Overacker, flyngresson@gmail.com, 208-756-6295, cell 208-940-0141.

MAP 17 - Whitewater

Condition: The fire crosses the MAP or threatens access to Whitewater Ranch on the 421 Big Mallard Creek Road. Description: The MAP begins at the confluence of the Main Fork of Big Mallard Creek and the Main Salmon River and travels north up the Big Mallard Creek drainage.

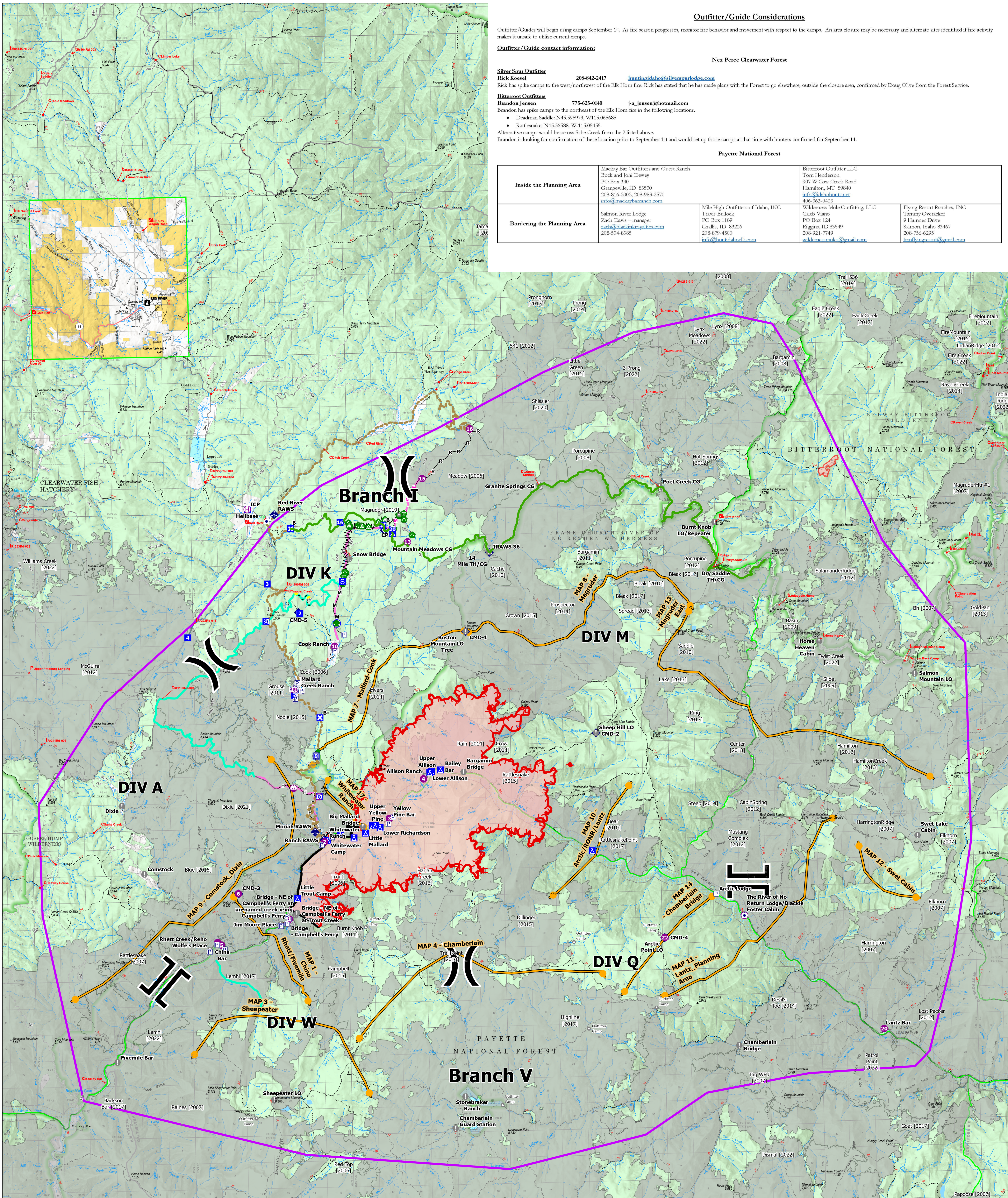
- Values:**
- Whitewater Wilderness Ranch
 - 421 Road containment line

Action: Consider actions based on current and forecasted fire weather and behavior, time of season and probability of a season-ending event.

Structure preparation is complete.
1. Insert personnel into Whitewater Ranch to implement structure protection operations.
2. Consider firing operations utilizing 421 road handline to protect Whitewater Ranch and keep fire east of containment lines.

See structure protection plans for Whitewater Wilderness Ranch located in Elkhorn Incident Microsoft Teams folder: 2023_IDPAF_ElkHorn>Documents>Situation_Channel>Structure Protection Plans.
See Accountable Property Map and Collector for water handling equipment associated with structure protection.

Resources: Structure Protection: WFM1 or T2/AHC Firing Operation: 4 IHC or 4 T2/AHC



Outfitter/Guide Considerations

Outfitter/Guides will begin using camps September 1st. As fire season progresses, monitor fire behavior and movement with respect to the camps. An area closure may be necessary and alternate sites identified if fire activity makes it unsafe to utilize current camps.

Outfitter/Guide contact information:

Nez Perce Clearwater Forest

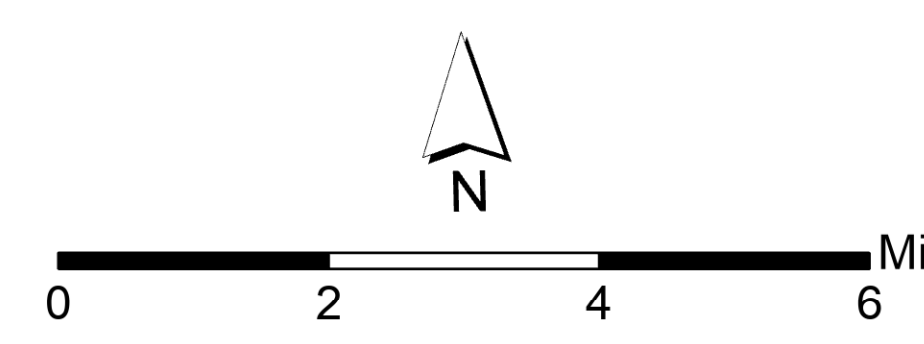
Silver Spur Outfitter
Rick Koesel 208-842-2417 huntingidaho@silverspurodge.com

Bitterroot Outfitters
Brandon Lewis 775-625-0140 ja_jensen@hotmail.com

- Brandon has spike camps to the northeast of the Elk Horn fire in the following locations.
- Deadman Saddle: N45.99973, W115.06568
 - Tanilumtas: N45.56588, W115.05455
- Alternative camps would be across Sabe Creek from the 2 listed above.
Brandon is looking for confirmation of these locations prior to September 1st and would set up those camps at that time with hunters confirmed for September 14.

Payette National Forest

Inside the Planning Area	Bordering the Planning Area	Payette National Forest
Mackay Bar Outfitters and Guest Ranch Black and Jim Dewey PO Box 340 Grangeville, ID 83830 208-762-2042, 208-985-2570 info@trackabarnranch.com	Salmon River Lodge Zach Davis - manager zach@blackievolcanics.com 208-834-6385	Bitterroot Outfitter LLC Tom Henderson 907 W Cow Creek Road Hamilton, MT 59840 info@bitterrootoutfitter.com 406-363-0403
	Mile High Outfitters of Idaho, INC Teresa Bullock PO Box 1189 Challis, ID 83226 208-879-4409 info@landandluck.com	Wilderness Made Outfitter, LLC Cathy Viano PO Box 124 Reggio, ID 83549 208-921-7749 wildernessmade@outfitter.com
		Flying Resort Ranches, INC Tanny Overacker 9 Harner Drive Salmon, Idaho 83467 208-756-6295 tanny@flyingresort.com



— Magruder Rd	Other Property	Incident Command Post	Bridge	Repeater	Access or Improved Road	PAVE
□ Pump	● Hotspot	Drop Point	● Repair Point	● Water Source	— Highlighted Feature	— Alternate
● Helibase	● Sling Site	□ Closure	● Landing or Log Deck	● Completed Fuel Break	— Management Action Point	— Primary
● Camp	● Division Break	● Staging Area	● Culvert	— Completed Hand Line	— Other	— Wildfire Daily Fire Perimeter
● Branch Break	● Other	● Value at Risk	● Clean Up Area	— Completed Mixed Construction Line	— Road Repair	— Contained
			● Internet Access	— Completed Road as Line	— Contained	— Uncontained
				● Planned Mixed Construction Line		