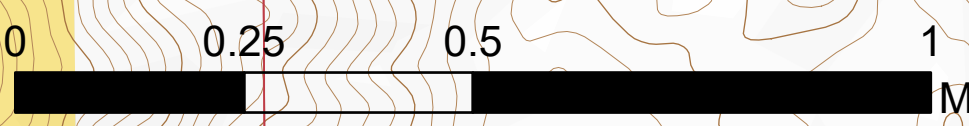
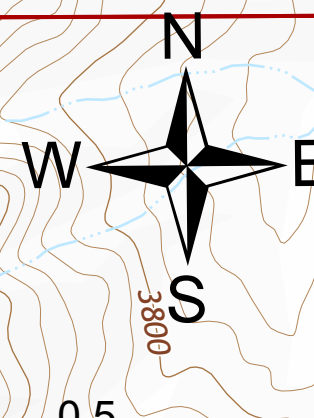


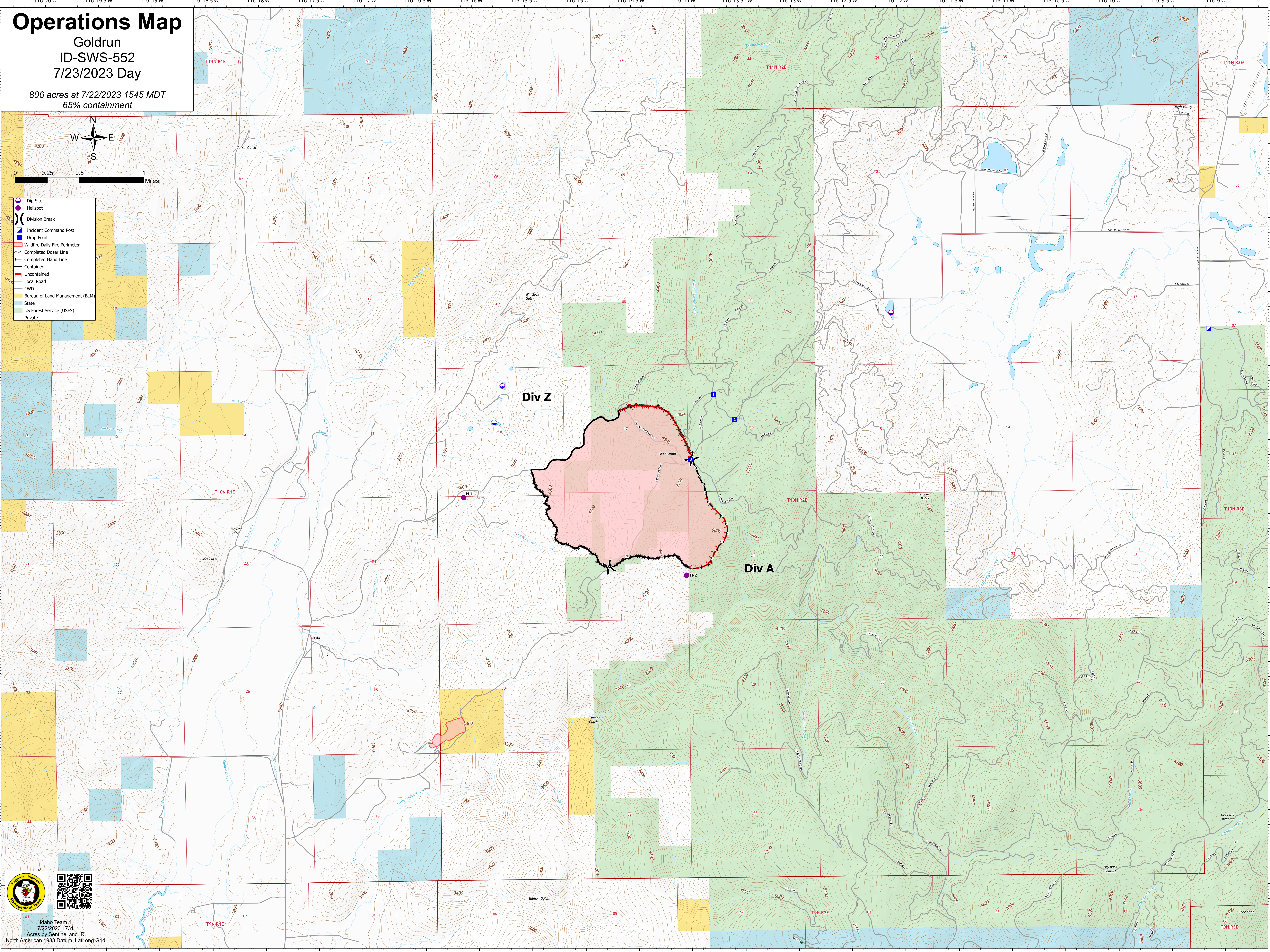
Operations Map

Goldrun
ID-SWS-552
7/23/2023 Day

806 acres at 7/22/2023 1545 MDT
65% containment

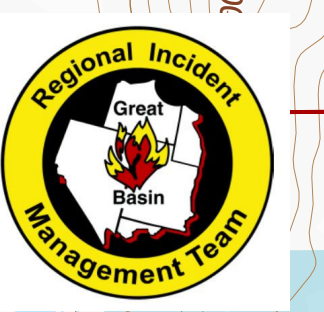


- Dip Site
- Helispot
- Division Break
- Incident Command Post
- Drop Point
- Wildfire Daily Fire Perimeter
- Completed Dozer Line
- Completed Hand Line
- Contained
- Uncontained
- Local Road
- HWD
- Bureau of Land Management (BLM)
- State
- US Forest Service (USFS)
- Private



Div Z

Div A



Idaho Team 1
7/22/2023 1731
Acres by Sentinel and IR
North American 1983 Datum, Lat/Long Grid