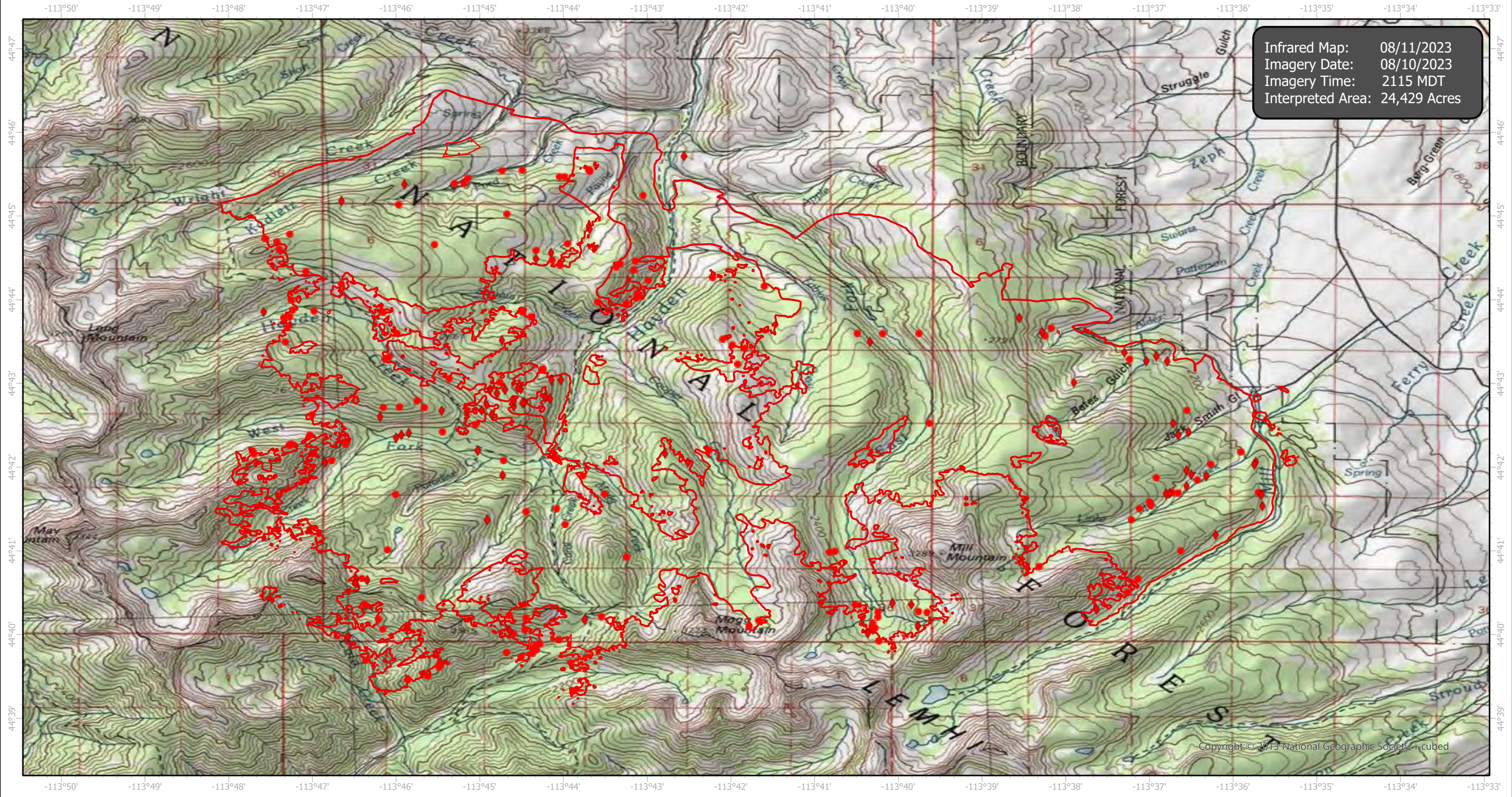


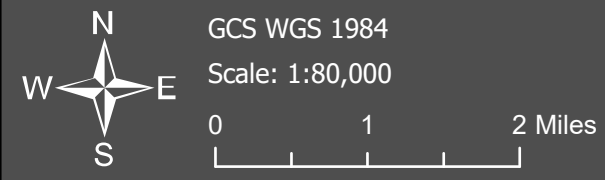
# Hayden Infrared Map

Incident # (ID-SCF-023084)



Infrared Map: 08/11/2023  
Imagery Date: 08/10/2023  
Imagery Time: 2115 MDT  
Interpreted Area: 24,429 Acres

Copyright © 2013 National Geographic Society, i-cubed



- IR Isolated Heat Source
- ◆ Possible IR Heat Source
- ▭ IR Heat Perimeter
- ▨ IR Intense Heat
- ▭ IR Scattered Heat

Infrared Interrupter: Daniel LeVrier  
email: [daniel.levrier@usda.gov](mailto:daniel.levrier@usda.gov)