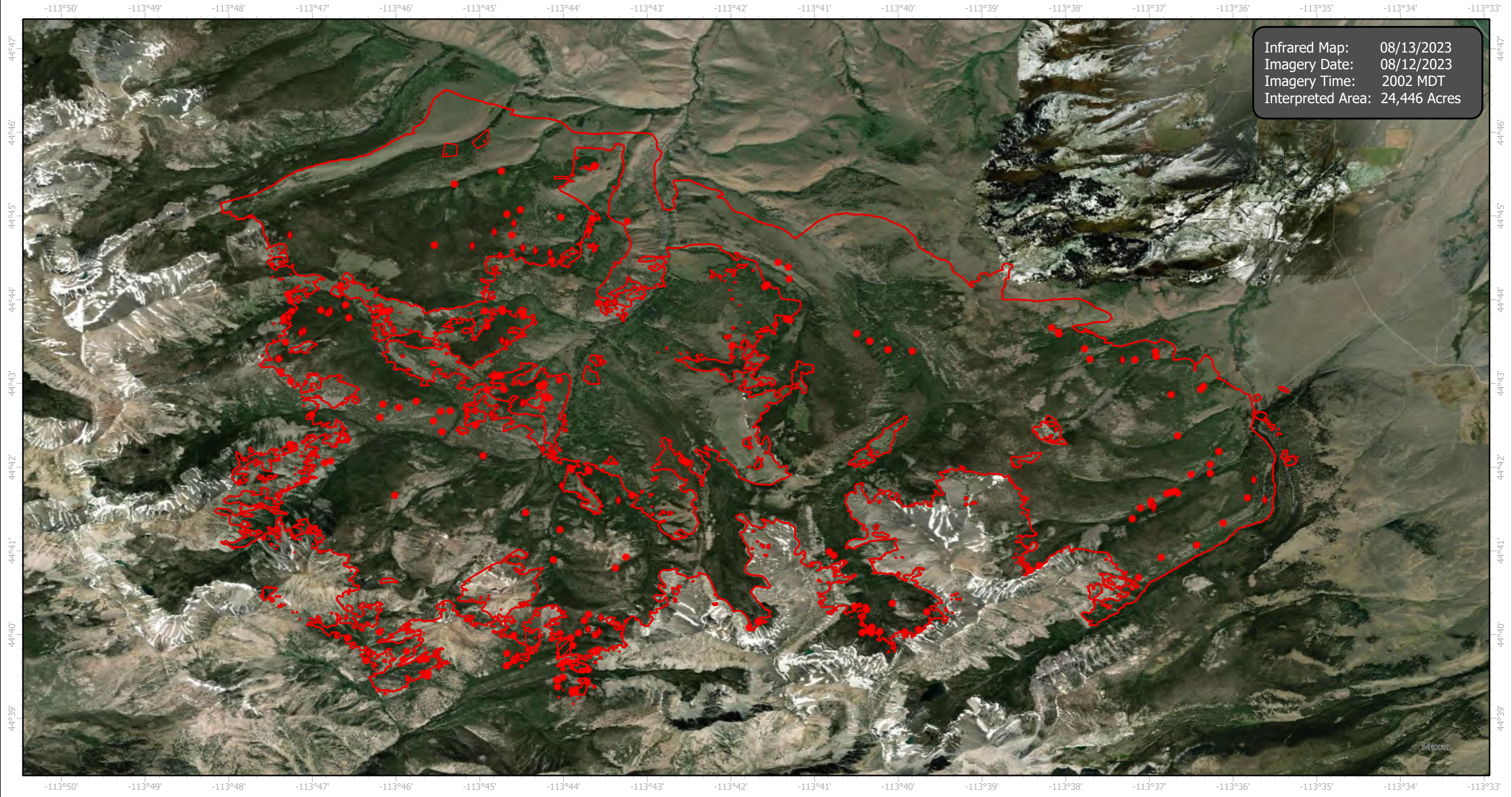
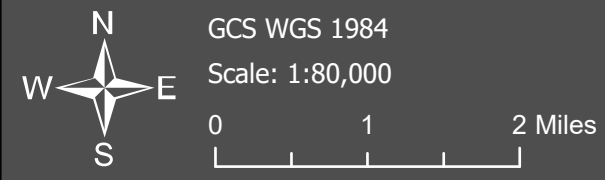


Hayden Infrared Map

Incident # (ID-SCF-023084)



Infrared Map: 08/13/2023
Imagery Date: 08/12/2023
Imagery Time: 2002 MDT
Interpreted Area: 24,446 Acres



- IR Isolated Heat Source
- ◆ Possible IR Heat Source
- ▭ IR Heat Perimeter
- ▨ IR Intense Heat
- ▭ IR Scattered Heat

Infrared Interrupter: Daniel LeVrier
email: daniel.levrier@usda.gov