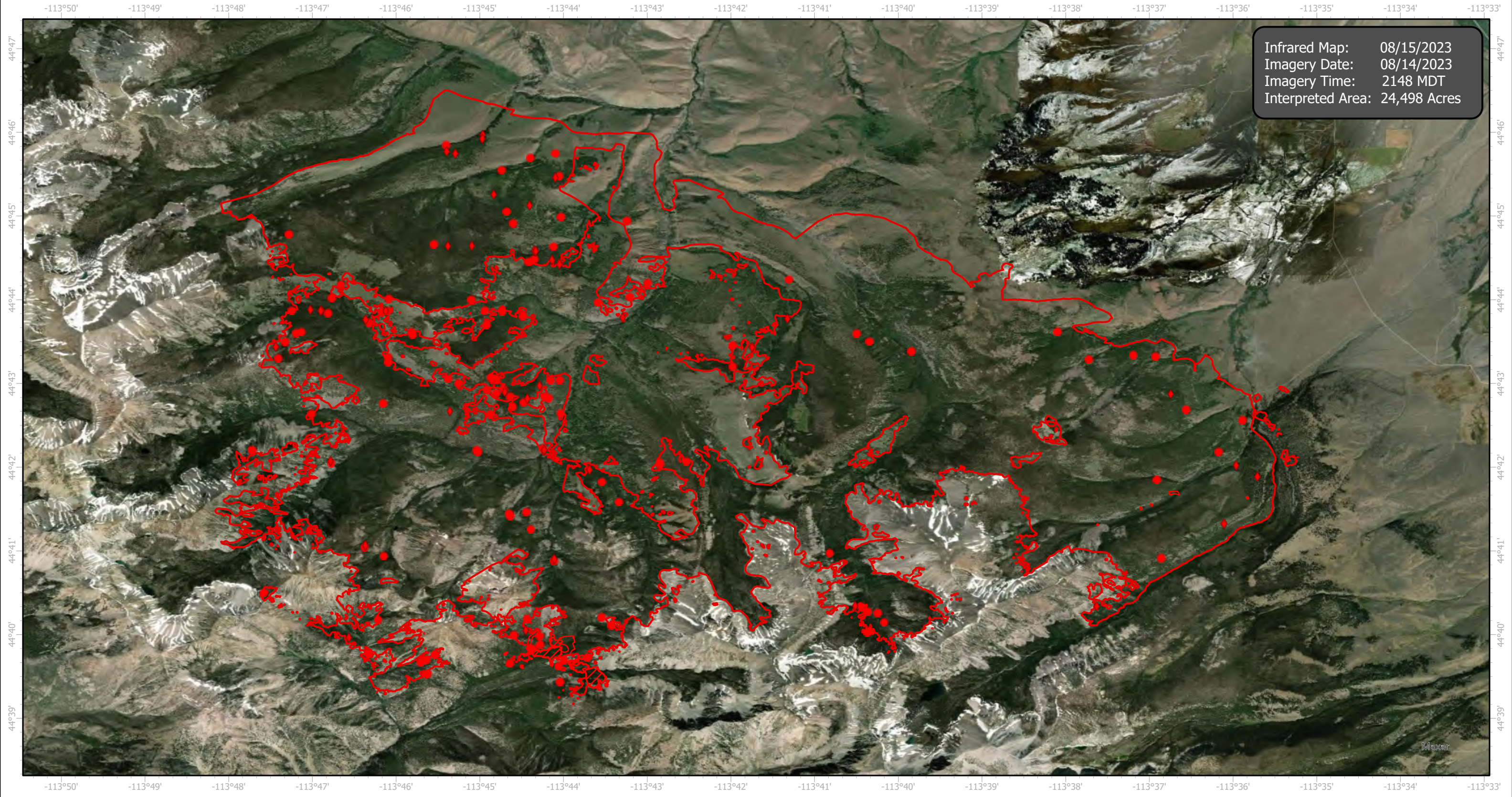
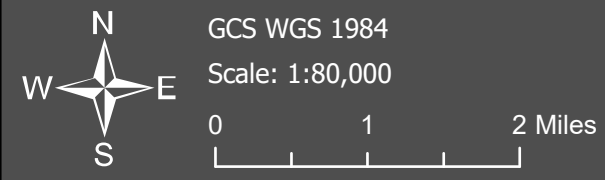


# Hayden Infrared Map

Incident # (ID-SCF-023084)



Infrared Map: 08/15/2023  
Imagery Date: 08/14/2023  
Imagery Time: 2148 MDT  
Interpreted Area: 24,498 Acres



- IR Isolated Heat Source
- ◆ Possible IR Heat Source
- ▭ IR Heat Perimeter
- ▨ IR Intense Heat
- ▭ IR Scattered Heat

Infrared Interrupter: Daniel LeVrier  
email: [daniel.levrier@usda.gov](mailto:daniel.levrier@usda.gov)