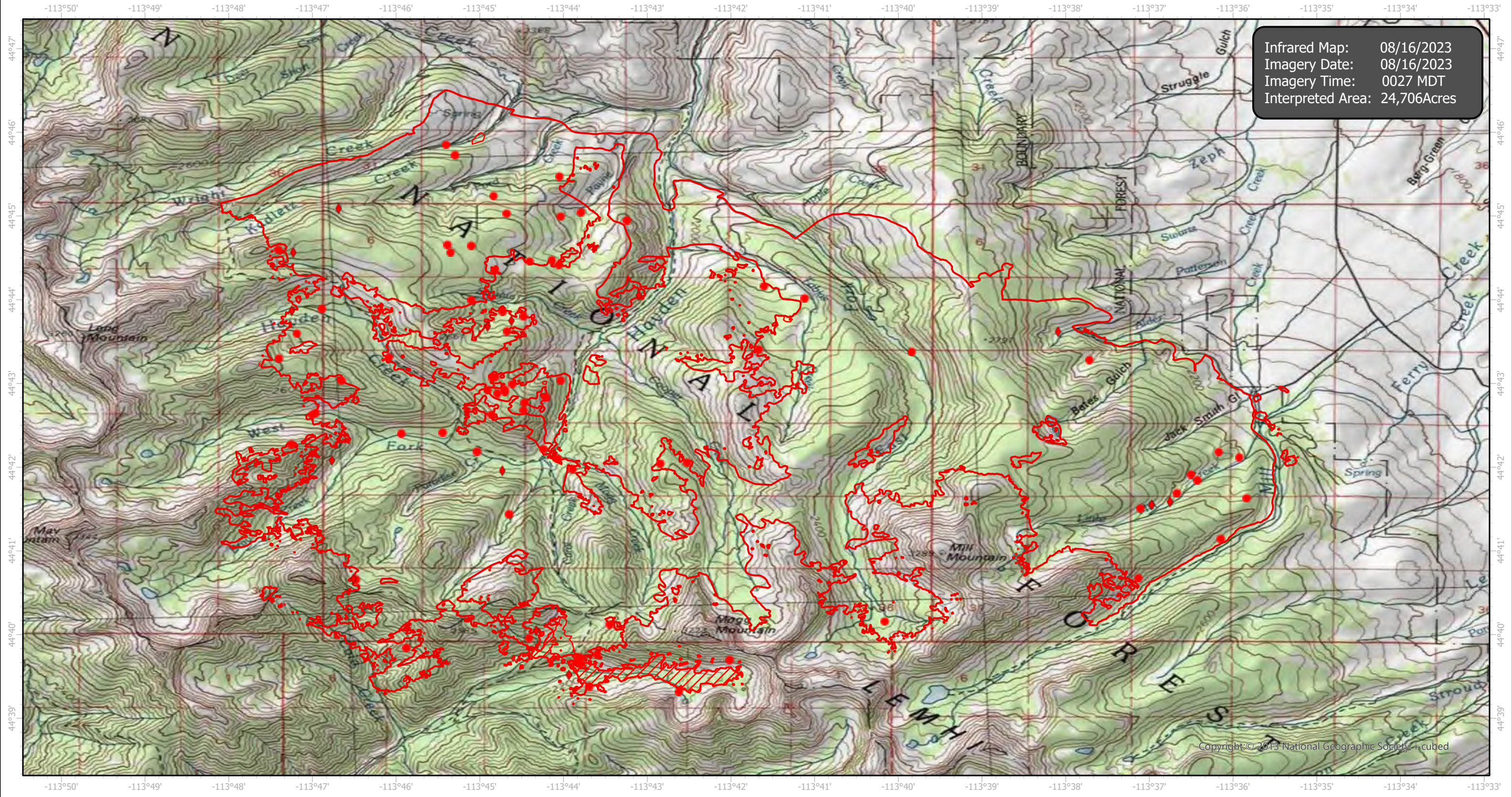


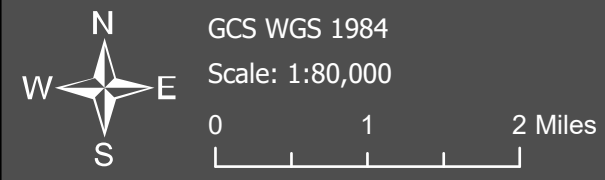
Hayden Infrared Map

Incident # (ID-SCF-023084)



Infrared Map: 08/16/2023
Imagery Date: 08/16/2023
Imagery Time: 0027 MDT
Interpreted Area: 24,706Acres

Copyright © 2013 National Geographic Society, i-cubed



- IR Isolated Heat Source
- ◆ Possible IR Heat Source
- ▭ IR Heat Perimeter
- ▨ IR Intense Heat
- ▭ IR Scattered Heat

Infrared Interrupter: Daniel LeVrier
email: daniel.levrier@usda.gov