



# Fire Weather Discussion

NUS55 KSLC 092034  
FWFSLC

Fire Weather Planning Forecast for Utah  
National Weather Service Salt Lake City UT  
234 PM MDT Sat Sep 9 2023

...MOISTURE RETURNS TO THE REGION...

.BROADCAST DISCUSSION...Initially dry thunderstorms will continue to spread across the region this afternoon and evening. Thunderstorms will trend wetter Sunday, with more widespread convection expected. Moisture will remain in place through at least midweek, improving overnight recoveries and minimum humidities.

.DISCUSSION...Mid-level moisture will support an area of high-based, dry thunderstorms across the region, with the highest threat across central and southern Utah through this evening. With deeper moisture in place Sunday, thunderstorms will trend wetter, with improving humidity profiles across much of the region. Moisture will remain in place across most of the region through at least midweek.

\*\*\*Thunderstorms imply strong, gusty and erratic winds\*\*\*

\*\*\*All winds are 20 foot, 10-minute averages\*\*\*

---

## Fire Weather Forecast for UTZ484

UTZ484-101215-  
Tavaputs Plateau-  
234 PM MDT Sat Sep 9 2023

.SUNDAY...

Sky/weather.....Mostly cloudy (80-90% cloud cover). Scattered rain showers until 1200, then numerous rain showers and scattered thunderstorms.

Max temperature.....76-82 near 6000 feet.  
67-73 near 8000 feet.

Min humidity.....29-35% near 6000 feet.  
32-42% near 8000 feet.

20-foot winds.....Upslope/upvalley 5-10 mph.

12K ft MSL winds....West 10-15 mph.

LAL.....4.

CWR.....40%.

Haines Index.....4 or ..low.

.SUNDAY NIGHT...

Sky/weather.....Mostly cloudy (75-85% cloud cover) until 2400, then partly cloudy (40-50% cloud cover). Scattered showers and thunderstorms until 2400.

Min temperature.....50-57 near 6000 feet.  
44-53 near 8000 feet.

Max humidity.....63-73% near 6000 feet.  
67-77% near 8000 feet.

20-foot winds.....Downslope/downvalley 5-10 mph.

12K ft MSL winds....Northwest 10-15 mph.

LAL.....4 until 2400...then 1.

CWR.....10%.

Haines Index.....3 or ..very low.

.MONDAY...

Sky/weather.....Partly cloudy (35-45% cloud cover). Isolated

showers and thunderstorms after 1200.  
Max temperature.....74-80 near 6000 feet.  
                                  65-71 near 8000 feet.  
Min humidity.....25-31% near 6000 feet.  
                                  31-41% near 8000 feet.  
20-foot winds.....Upslope/upvalley 5-10 mph.  
12K ft MSL winds....Light and variable.  
LAL.....1 until 1200...then 2.  
CWR.....0%.  
Haines Index.....3 or ..very low.

.FORECAST DAYS 3 THROUGH 7...

.TUESDAY...Numerous rain showers and scattered thunderstorms.

Lows in the mid 50s in the valleys and in the upper 40s in the mountains. Highs in the lower 70s in the valleys and in the lower 60s in the mountains. Winds generally less than 15 mph.

.WEDNESDAY...Mostly cloudy. Scattered showers and thunderstorms.

Lows in the lower 50s in the valleys and in the mid 40s in the mountains. Highs in the lower 70s in the valleys and in the lower 60s in the mountains. Winds generally less than 15 mph.

.THURSDAY...Partly cloudy. Scattered showers and thunderstorms.

Lows in the lower 50s in the valleys and in the mid 40s in the mountains. Highs in the lower 70s in the valleys and in the lower 60s in the mountains. Winds generally less than 15 mph.

.FRIDAY...Partly cloudy. Scattered rain showers and isolated thunderstorms. Lows in the lower 50s in the valleys and in the mid 40s in the mountains. Highs in the lower 70s in the valleys and in the lower 60s in the mountains.

.SATURDAY...Partly cloudy. Isolated showers and thunderstorms.

Lows in the lower 50s in the valleys and in the mid 40s in the mountains. Highs in the lower 70s in the valleys and in the mid 60s in the mountains.

<b>INCIDENT OBJECTIVES</b>	1. Incident Name	2. Date Prepared	3. Time Prepared
	<b>Lighthouse Canyon</b>	<b>09/09/2023</b>	<b>2000</b>
4. Operational Period <b>09/10/2023</b>			
5. General Control Objectives For The Incident (Include Alternatives)			
<ul style="list-style-type: none"> <li>1) <b>Firefighter and Public Safety is the primary objective for all fire management actions</b></li> <li>2) <b>Utilize Direct Attack Tactics to maintain the fire on the Tavaputs Plateau with the intent of limiting fire spread East off of the plateau and west beyond the Hunt Oil Property Line</b></li> <li>3) <b>Utilize Point protections strategies to limit impacts to structures and other infrastructure located on the Tavaputs Plateau</b></li> <li>4) <b>Minimize impacts to private lands while allowing fire to play a natural, ecological role within the wilderness located in the fire area.</b></li> </ul>			
6. Weather Forecast For Period <b>Expect active weather over the fire are today and continuing into the work week. Thunderstorms will trend wetter and humidity should increase.</b>			
7. General Safety Message <b>See ICS 208 for general safety message</b>			
8. ATTACHEMENTS (X IF ATTACHED)			
<input type="checkbox"/> Organization List - ICS 203 <input type="checkbox"/> Medical Plan - ICS 206 <input type="checkbox"/> _____ <input type="checkbox"/> Division Assignment Lists - ICS 204 <input type="checkbox"/> Incident Map <input type="checkbox"/> _____ <input type="checkbox"/> Communications Plan - ICS 205 <input type="checkbox"/> Traffic Plan <input type="checkbox"/> _____			
9. Prepared By (Planning Section Chief)		10. Approved By (Incident Commander)	
<b>Mike Bertagnolli</b>			

ORGANIZATION ASSIGNMENT LIST		9. Operations Section		
1. Incident Name  <b>Lighthouse Canyon</b>		Chief	Phil Lund	
		<b>a. Branch I - Divisions/Groups</b>		
		Branch Director		
2. Date 09/08/2023	3. Time 1930	Deputy		
4. Operational Period  09/09/2023		Division/Group	Alpha	Jeff Runk/Nick Turco(T)
		Division/Group	Zulu	Gabe Harry/Ben Agol(T)
<b>5. Incident Commander and Staff</b>		Division/Group		
Incident Commander	Chris Deets 435-630-5929	Division/Group		
Incident Commander (T)	Michael Odell 701-290-7175	Division/Group		
Safety Officer	Brent Van Gundy			
<b>6. Agency Representatives</b>				
Agency	Name			
<b>7. Planning Section</b>				
Chief	Mike Bertagnolli 435-790-1105			
Deputy				
Resources Unit				
Situation Unit				
Documentation Unit				
Demobilization Unit		<b>d. Air Operations Branch</b>		
Technical Specialists		Helibase Manager	Tyler Maine 701-866-4556	
Human Resources		Air Attack Supervisor		
Training		Air Support Supervisor		
		Helicopter Coordinator		
		Air Tanker Coordinator		
<b>8. Logistics Section</b>		<b>10. Finance Section</b>		
Chief	Jaydon Mead	Chief		
		Deputy		
		Time Unit		
		Procurement Unit		
		Compensation/Claims Unit		
		Cost Unit		
		Prepared by Mike Bertagnolli		

DIVISION ASSIGNMENT LIST				1. Branch		2. Division/Group <b>Alpha</b>	
3. Incident Name <b>Lighthouse Canyon</b>				4. Operational Period Date: 09/10/2023      Time: 0600-2200			
5. Operations Personnel							
Operations Chief		<b>Phil Lind</b>		Division/Group Supervisor		<b>Jeff Runck/Nic Turco (T)</b>	
Branch Director				Air Attack Supervisor No.			
6. Resources Assigned This Period							
Strike Team/Task Force/ Resource Designator	Leader	Number Persons	LWD	Drop Off PT/Time	Pick Up PT/Time		
T2IA Shoreline	Connor Bradley	20	09/21	0600	2200		
ENG T4 2334 (Super Heavy)	Cash Jessop	3	09/17	0600	2200		
ENG T6 8621	Terance Kim	3	09/20	0600	2200		
Smokejumpers	Logan Bosak	14	09/20	0600	2200		
TFLD	Brian Bornong	1	09/20	0600	2200		
SOFR (09/23)	Brent VanGundy	1		0600	2200		
EMT (09/19)	Adrian Marnell	1		0600	2200		
7. Control Operations <b>Task:</b> Keep the fire to the wilderness on the south side of the Range Valley Mountain Road <b>Purpose:</b> Minimize fire impacts to private land on top of the plateau and protect values at risk <b>End State:</b> Fire is held to the wilderness area.  <b>Task:</b> Secure burnout operation on top of the plateau <b>Purpose:</b> Prevent additional fire growth on top of the plateau <b>End State:</b> Fire stays within existing burnout perimeter.							
8. Special Instructions							
9. Division/Group Communication Summary							
Function	Frequency	System	Channel	Function	Frequency	System	Channel
Command	<b>Tavaputs</b>	<b>King NIFC</b>	<b>172.6750</b>	Air to Ground	<b>Primary</b>	<b>King NIFC</b>	<b>167.9500</b>
			<b>164.4750 (136.5)</b>				<b>167.9500</b>
Tactical Div/Group	<b>Tac 7</b>	<b>King NIFC</b>	<b>169.1875</b>	Air to Ground	<b>Secondary</b>	<b>King NIFC</b>	<b>168.4000</b>
			<b>169.1875</b>				<b>168.4000</b>
Prepared By (Resource Unit Leader)		Approved By (Planning Sect. Ch.)		Date	Time		
<b>Mike Bertagnolli</b>				<b>09/09/2023</b>	<b>2000</b>		

DIVISION ASSIGNMENT LIST		1. Branch		2. Division/Group <b>Zulu</b>			
3. Incident Name <b>Lighthouse Canyon</b>		4. Operational Period Date: 09/10/2023		Time: 0600-2200			
5. Operations Personnel							
Operations Chief	<b>Phil Lind</b>		Division/Group Supervisor		<b>Gabe Harry/Ben Agol (T)</b>		
Branch Director			Air Attack Supervisor No.				
6. Resources Assigned This Period							
Strike Team/Task Force/ Resource Designator	Leader	Number Persons	LWD	Drop Off PT/Time	Pick Up PT/Time		
T2IA Northern Utah Regulars	Taylor Ford	22	09/22	0600	2200		
ENGT6 681	Jermic Jorgensen	2	09/20	0600	2200		
ENGT6 6618	Garrett Spence	3	09/11	0600	2200		
ENGT6 8611	Matt Specht	2	09/20	0600	2200		
WT2 6911	Chris Marlor	1	09/20	0600	2200		
WT2 Waterboys 911	Angel Martin	1		0600	2200		
SOFR	Brent VanGundy	1		0600	2200		
EMT	Adrian Marnell	1		0600	2200		
7. Control Operations <b>Task:</b> Keep fire south of the Range Valley Mountain Road. Keep fire out of the structure and repeater east of the fire. <b>Purpose:</b> Minimize impact to private land on top of the plateau to protect values at risk <b>End State:</b> Fire stays within current perimeter.							
8. Special Instructions							
9. Division/Group Communication Summary							
Function	Frequency	System	Channel	Function	Frequency	System	Channel
Command	<b>Tavaputs</b>	<b>King NIFC</b>	<b>172.6750</b>	Air to Ground	<b>Primary</b>	<b>King NIFC</b>	<b>167.9500</b>
			<b>164.4750 (136.5)</b>				<b>167.9500</b>
Tactical Div/Group	<b>Tac 2</b>	<b>King NIFC</b>	<b>166.9625</b>	Air to Ground	<b>Secondary</b>	<b>King NIFC</b>	<b>168.4000</b>
Prepared By (Resource Unit Leader) <b>Mike Bertagnolli</b>		Approved By (Planning Sect. Ch.)		Date	Time		

<b>INCIDENT RADIO COMMUNICATIONS PLAN</b>			1. Incident Name <b>Lighthouse Canyon</b>	2. Date/Time Prepared <b>09/09/2023</b>	3. Operational Period Date/Time <b>09/10/2023 0600-2200</b>
4. BASIC RADIO CHANNEL UTILIZATION					
Radio Type/Cache	Channel	Function	Frequency/Tone	Assignment	Remarks
<b>King NIFC</b>	<b>Tavaputs (Price)</b>	<b>Command Channel</b>	<b>Rx 172.6750 Tx 164.4750 Tone 136.5 (110.9)</b>		<b>Non-agency Medevac</b>
<b>King NIFC</b>	<b>Tac 7</b>	<b>Alpha Tac</b>	<b>Rx 169.1875 Tx 169.1875</b>	<b>Divisions Alpha</b>	
<b>King NIFC</b>	<b>Tac 2</b>	<b>Zulu Tac</b>	<b>Rx 166.9625 Tx 166.9625</b>	<b>Division Zulu</b>	
<b>King NIFC</b>	<b>Air to Ground</b>	<b>Primary</b>	<b>Rx 167.9500 Tx 167.9500</b>		
<b>King NIFC</b>	<b>Air to Ground</b>	<b>Secondary</b>	<b>Rx 168.4000 Tx 168.4000</b>		
<b>King NIFC</b>	<b>Airmed</b>	<b>VMED 28</b>	<b>Rx 155.3400 Tx 155.3400 Tone 156.7</b>		
<b>King NIFC</b>					
<b>King NIFC</b>					
<b>King NIFC</b>					
<b>King NIFC</b>					
5. Prepared By <b>Mike Bertagnolli</b>					



# MEDICAL PLAN (ICS 206 WF)

Controlled Unclassified Information//Basic

## Medical Incident Report

FOR A NON-EMERGENCY INCIDENT, WORK THROUGH CHAIN OF COMMAND TO REPORT AND TRANSPORT INJURED PERSONNEL AS NECESSARY.

FOR A MEDICAL EMERGENCY: IDENTIFY ON-SCENE INCIDENT COMMANDER BY NAME AND POSITION AND ANNOUNCE **"MEDICAL EMERGENCY"** TO INITIATE RESPONSE FROM IMT COMMUNICATIONS/DISPATCH.

Use the following items to communicate situation to communications/dispatch.

1. CONTACT COMMUNICATIONS / DISPATCH (Verify correct frequency prior to starting report) Ex: "Communications, Div. Alpha. Stand-by for Emergency Traffic."
2. INCIDENT STATUS: Provide incident summary (including number of patients) and command structure.

Ex: "Communications, I have a Red priority patient, unconscious, struck by a falling tree. Requesting air ambulance to Forest Road 1 at (Lat./Long.) This will be the Trout Meadow Medical, IC is TFLD Jones. EMT Smith is providing medical care."

Severity of Emergency / Transport Priority	<input type="checkbox"/> RED / PRIORITY 1 Life or limb threatening injury or illness. Evacuation need is IMMEDIATE Ex: Unconscious, difficulty breathing, bleeding severely, 2° - 3° burns more than 4 palm sizes, heat stroke, disoriented. <input type="checkbox"/> YELLOW / PRIORITY 2 Serious Injury or illness. Evacuation may be DELAYED if necessary. Ex: Significant trauma, unable to walk, 2° - 3° burns not more than 1-3 palm sizes. GREEN / <input type="checkbox"/> PRIORITY 3 Minor Injury or illness. Non-Emergency transport Ex: Sprains, strains, minor heat-related illness.	
Nature of Injury or Illness & Mechanism of Injury		Brief Summary of Injury or Illness (Ex: Unconscious, Struck by Falling Tree)
Evacuation Request		Air Ambulance / Short Haul/Hoist Ground Ambulance / Other
Patient Location		Descriptive Location & Lat. / Long. (WGS84)
Incident Name		Geographic Name + Medical (Ex: Trout Meadow Medical)
On-Scene Incident Commander		Name of on-scene IC of Incident within an Incident (Ex: TFLD Jones)
Patient Care		Name of Care Provider (Ex: EMT Smith)

3. INITIAL PATIENT ASSESSMENT: Complete this section for each patient as applicable (start with the most severe patient)

Patient Assessment: See IRPG PAGE 106

Treatment:

4. EVACUATION PLAN:

Evacuation Location (if different): (Descriptive Location (drop point, intersection, etc.) or Lat. / Long.)

Patient's ETA to Evacuation Location:

Helispot / Extraction Site Size and Hazards:

5. ADDITIONAL RESOURCES / EQUIPMENT NEEDS:

Example: Paramedic/EMT, crews, immobilization devices, AED, oxygen, trauma bag, IV/fluid(s), splints, rope rescue, wheeled litter, HAZMAT, extrication

6. COMMUNICATIONS: Identify State Air/Ground EMS Frequencies and Hospital Contacts as applicable

Function	Channel Name/Number	Receive (RX)	Tone/NAC *	Transmit (TX)	Tone/NAC *
COMMAND					
AIR-TO-GRND					
TACTICAL					

7. CONTINGENCY: Considerations: If primary options fail, what actions can be implemented in conjunction with primary evacuation method? Be thinking ahead..

8. ADDITIONAL INFORMATION: Updates/Changes, etc.

**REMEMBER:** Confirm ETAs of resources ordered. Act according to your level of training. Be Alert. Keep Calm. Think Clearly. Act Decisively.

# MEDICAL PLAN (ICS 206 WF)

Controlled Unclassified Information//Basic

1. Incident/Project Name		2. Operational Period						
LIGHTHOUSE		Date/Time <b>09/10/2023</b>						
3. Ambulance Services								
Name	Complete Address	Phone & EMS Frequency	Advanced Life Support (ALS) Yes      No					
CARBON COUNTY EMS	PRICE, UT	435-636-3251	<input checked="" type="checkbox"/> <input type="checkbox"/>					
EMERY COUNTY EMS	EMERY COUNTY, UT	435-381-2404	<input checked="" type="checkbox"/> <input type="checkbox"/>					
4. Air Ambulance Services								
Name	Phone	Type of Aircraft & Capability						
CLASSIC AIR MED (75 NM)	800-444-9223	BELL 407   BACKCOUNTRY LZ + NIGHT VISION						
IHC LIFEFLIGHT (110 NM)	800-321-1911	AUGUSTA K2   HOIST + NIGHT VISION + 2 PATIENTS (*NO NIGHT HOIST)						
5. Hospitals								
Name Complete Address	GPS Datum – WGS 84 Coordinate Standard Degrees Decimal Minutes DD° MM.MMM' N - Lat DD° MM.MMM' W - Long		Travel Time Air      Gnd		Phone	Helipad Yes      No		Level of Care Facility
	Lat:	Long:	VHF:					
CASTLE VIEW HOSPITAL			35 NM 15 min	5 mi 10 min	435-637-4800	<input checked="" type="checkbox"/>	<input type="checkbox"/>	LEVEL IV TRAUMA
UTAH VALLEY REGIONAL HOSPITAL			55 NM 30 min	83 mi 1hr 30min	801-357-7850	<input checked="" type="checkbox"/>	<input type="checkbox"/>	LEVEL II TRAUMA
ST. MARY'S HOSPITAL			75 NM 40 min	127 mi 2hr 30min	970-244-2273	<input checked="" type="checkbox"/>	<input type="checkbox"/>	LEVEL II TRAUMA
University of Utah Medical Center			55NM	154 mi	801-581-2121	<input checked="" type="checkbox"/>	<input type="checkbox"/>	Burn Center
6. Division   Branch   Group		Area Location Capability						
LIGHTHOUSE		EMS Responders & Capability:						
		Equipment Available on Scene:						
		Medical Emergency Channel:						
		ETA for Ambulance to Scene:						
		Air:		0hrs 30mins				
		Ground:		3hrs 00mins or greater				
		Approved Helispot:						
		Lat:						
		Long:						
		EMS Responders & Capability:						
		Equipment Available on Scene:						
		Medical Emergency Channel:						
		ETA for Ambulance to Scene:						
		Air:						
		Ground:						
		Approved Helispot:						
		Lat:						
		Long:						

INCIDENT: Lighthouse Canyon Fire

DATE: September 10<sup>th</sup> 2023 TIME: Day 0600-2200

**Major Hazards and Risks:**

- **Heat Related Illness (HRI):** Take care to monitor the health and welfare of yourself and crew, drink plenty of water/fluids, take frequent breaks, get 8 hours of sleep, and get enough food to support your task of the day.
- **Extreme Fire Behavior:** Maintain awareness of changing weather conditions.

**Fire Order of the Day:**

*Be ALERT, keep CALM, THINK clearly, and ACT decisively.*

- **Have I been working long shifts, and getting adequate rest? Meeting the 2:1 work/rest ratios?**
- **Am I paying attention to what the fire is doing and changes in the fire’s behavior because of fuels, weather and topography? (Think “situational awareness”).**

**FATIGUE MANAGEMENT**

FATIGUE IS CUMULATIVE!!!!  
Complete the checklist...what’s your score???

- Adequate Rest?       Thinking about going home?
- Proper Nutrition?     Driving too far?
- Personal Hygiene?     Been out to many days?



**Watchout Situation #7 is a danger that must be mitigated by maintaining good communications while working on fires**



7. NO COMMUNICATION LINK WITH CREW MEMBERS/SUPERVISOR

**Radio frequencies confirmed  
Backup and check-ins established  
Update on any situation change  
Sound alarm early, not late**

**Always think LCES.....**

**Discuss possible risks prior to engaging in work tasks.**



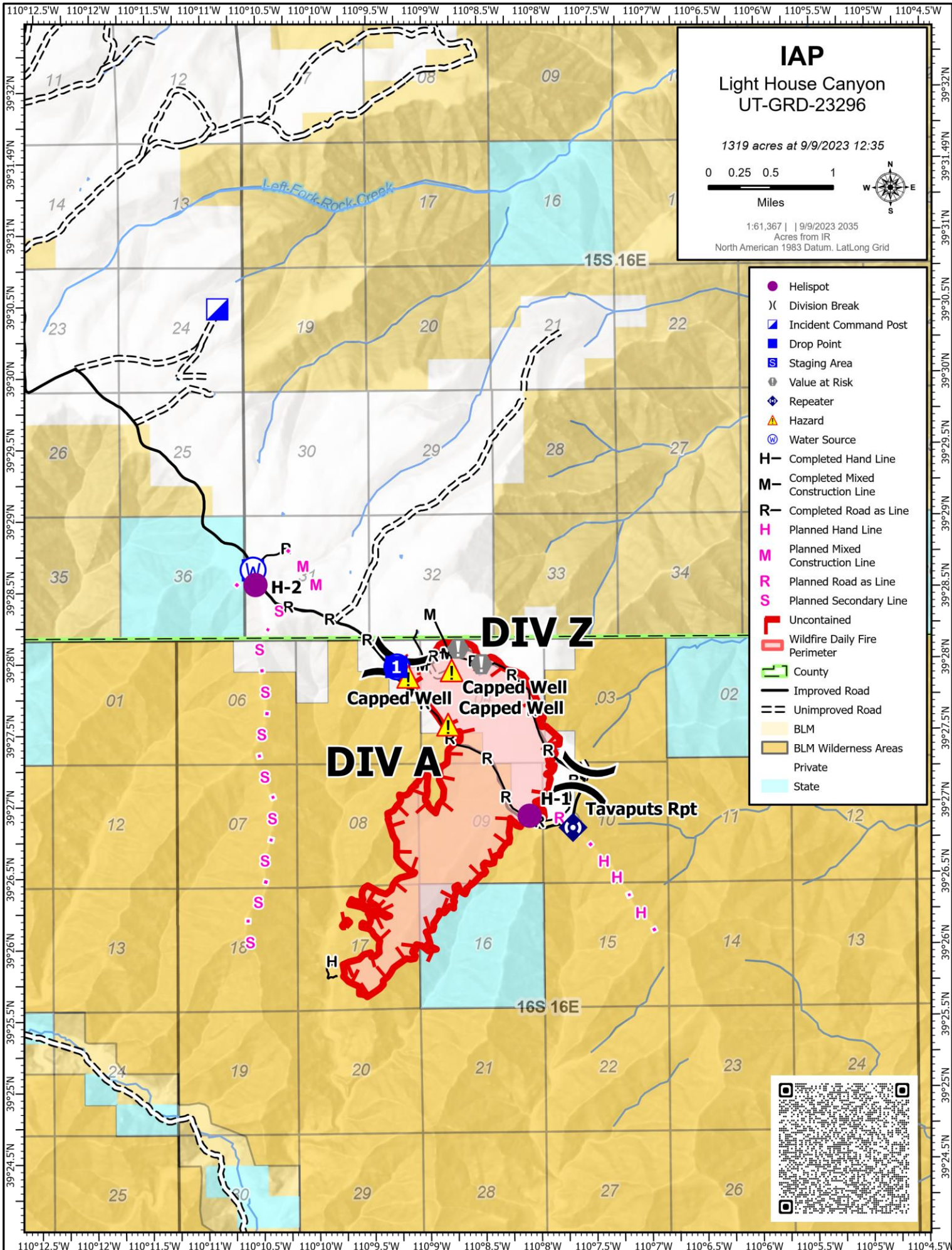
1. Incident Name: LIGHTHOUSE	2. Operational Period: Date 09/10/2023 From:Date To: 09/10/2023 Time From: 06:00 Time To: 22:00	3. Sunrise: 07:28 Sunset: 20:13
---------------------------------	---	------------------------------------

4. Remarks (safety notes, hazards, air operations special equipment, etc.):	5. Ready Alert Aircraft: Medivac: New Incident:		6. Temporary Flight Restriction Number: Altitude: Center Point:
	8. Frequencies:	AM	FM
	Air/Air Fixed-Wing	124.075	

7. Personnel:	Name:	Phone Number:	Air/Air Rotary-Wing – Flight Following	124.075		
Air Operations Branch Director			Air/Ground		166.9375	
Air Support Group Supervisor			Command			Other Fixed-Wing Aircraft:
Air Tactical Group Supervisor			Deck Coordinator		163.1000	
Helicopter Coordinator			Take-Off & Landing Coordinator			
Helibase Manager	TYLER MAINE	701-866-4556	Air Guard		168.6250 Tx Tone: 110.9	

10. Helicopters (use additional sheets as necessary):						
FAA N#	Category/Kind/Type	Make/Model	Base	Available	Start	Remarks
13CK	TYPE I	S61	PRICE HELIBASE	08:00-20:00	07:00	SNORKEL
74TH	TYPE I	KMAX	PRICE HELIBASE	08:00-20:00	07:00	
29HT	TYPE II	UH1 205 A-1++	PRICE HELIBASE			
31BH	TYPE III	H125	PRICE HELIBASE	08:00-20:00	07:00	STEP
Blm Blackhawk	TYPE I	Blackhawk	PRICE HELIBASE	08:00-20:00		





# IAP

## Light House Canyon UT-GRD-23296

1319 acres at 9/9/2023 12:35



1:61,367 | 9/9/2023 2035  
Acres from IR  
North American 1983 Datum, Lat/Long Grid

- Helispot
- X Division Break
- Incident Command Post
- Drop Point
- Staging Area
- Value at Risk
- ◆ Repeater
- ▲ Hazard
- ⊙ Water Source
- H** Completed Hand Line
- M** Completed Mixed Construction Line
- R** Completed Road as Line
- H** Planned Hand Line
- M** Planned Mixed Construction Line
- R** Planned Road as Line
- S** Planned Secondary Line
- ┌ Uncontained
- └ Wildfire Daily Fire Perimeter
- ▭ County
- Improved Road
- = Unimproved Road
- ▭ BLM
- ▭ BLM Wilderness Areas
- ▭ Private
- ▭ State

**DIV Z**

**DIV A**

Capped Well Capped Well

Tavaputs Rpt

