

# LIGHT HOUSE CANYON

## INCIDENT ACTION PLAN

UT-GRD-023296 PD QJ9X (1522)

Wednesday, Sept 13, 2023 - Day Shift 0600-2200



**Finance Related**  
Questions and Information:

[2023.lighthousecanyon.finance@firenet.gov](mailto:2023.lighthousecanyon.finance@firenet.gov)

Please turn in  
CTR and ST regularly.

Check For:  
Correct Date(s)  
Signed By Line Supervisor  
Correct Resource Order #



Maps, IAP, Fillable Documents



**Ron Steffens, ICT3**


**Travis Pardue, ICT3(t)**

## INCIDENT OBJECTIVES (ICS 202)

<b>1. Incident Name:</b>		<b>2. Operational Period:</b> DAY	
LIGHT HOUSE CANYON		Date/Time From: 09/13/2023 0600 WED	Date/Time To: 09/13/2023 2200 WED
<b>3. Objective(s):</b>			
<p>1) Firefighter and Public Safety is the primary objective for all fire management actions</p> <p>2) Utilize Direct Attack Tactics to maintain the fire on the Tavaputs Plateau with the intent of limiting fire spread east off of the plateau and northwest along the plateau edge.</p> <p>3) Utilize Point protections strategies to limit impacts to structures and other infrastructure located on the Tavaputs Plateau</p> <p>4) Minimize impacts to private lands while allowing fire to play a natural, ecological role within the wilderness located in the fire area.</p> <p>5) Continue working relationships with private landowners and local agencies.</p>			
<b>4. Operational Period Command Emphasis:</b>			
<b>General Situational Awareness:</b>			
<b>5. Site Safety Plan Required?</b> Yes <input type="checkbox"/> No <input checked="" type="checkbox"/>			
<b>Approved Site Safety Plan(s) Located</b>			
<b>6. Incident Action Plan</b> (the items checked below are included in this Incident Action Plan):			
<input checked="" type="checkbox"/> ICS 202	<input type="checkbox"/> ICS 207	Other Attachments: <input type="checkbox"/> _____ <input type="checkbox"/> _____ <input type="checkbox"/> _____ <input type="checkbox"/> _____	
<input checked="" type="checkbox"/> ICS 203	<input type="checkbox"/> ICS 208		
<input type="checkbox"/> ICS 204	<input checked="" type="checkbox"/> ICS 220		
<input type="checkbox"/> ICS 205	<input checked="" type="checkbox"/> Map/Chart		
<input type="checkbox"/> ICS 205A	<input checked="" type="checkbox"/> Weather Forecast/Tides/Currents		
<input checked="" type="checkbox"/> ICS 206			
<b>7. Prepared by:</b> STAN MITCHEM		<b>Position/Title:</b> PSC3	<b>Signature:</b> 
<b>8. Approved by Incident Commander:</b>		<b>Name:</b> TRAVIS PARDUE, ICT3(T)	<b>Signature:</b> 
<b>ICS 202</b>		<b>IAP Page</b>	<b>Date/Time:</b> 09/12/2023 1700



## ORGANIZATION ASSIGNMENT LIST (ICS 203)

<b>1. Incident Name:</b>		<b>2. Operational Period:</b> DAY	
LIGHT HOUSE CANYON		Date/Time From: 09/13/2023 0600	Date/Time To: 09/13/2023 2200
		WED	WED
<b>3. Incident Commander(s) and Command Staff:</b>		DAY OPS SECTION CHIEF	
IC/UC	RONALD STEFFENS TRAVIS PARDUE (T)	NIGHT OPS SECTION CHIEF	
IC/UC	BJ CLARK (T)	PLANNING OPS	TIDDLE CAMINO
SAFETY OFFICER	MARK HAINES WYNN WHITMEYER (T)	OPS SECTION CHIEF	PHIL LIND CHRIS VERO
INFORMATION OFFICER		DEPUTY OPS SECTION CHIEF	
LIAISON OFFICER		STAGING AREA	
<b>4. Agency/Organization Representative(s):</b>			
Agency/Organization	Name	DIVISION/GROUP	
BLM AA	LANCE PORTER	ALPHA	JEFF RUNK NICK TURCO (T)
BLM AA REP.	KYLE BEAGLEY DANA TRUMAN (T)	MIKE	RUSS WENKE
UTAH FMO	RUDY SANDOVAL	ZULU	GABE HARRY BEN AGOL (T)
CARBON COUNTY EMA	JUSTIN NEEDLES	<b>7b. Air Operations Branch:</b>	
<b>5. Planning Section:</b>		AIR OPS BRANCH DIRECTOR	JACK TOWNSEND (T)
CHIEF	STAN MITCHEM	AIR ATTACK SUPERVISOR	
DEPUTY		AIR SUPPORT SUPERVISOR	
STATUS CHECK-IN	ANGIE CROOK (T)	HELICOPTER COORDINATOR	
SITUATION UNIT		AIR TANKER COORDINATOR	
DOCUMENTATION UNIT		HELIBASE MANAGER	BRYAN THOMPSON 801-495-7600
DEMOBILIZATION UNIT		<b>8. Finance/Administration Section:</b>	
FIRE BEHAVIOR ANALYST		CHIEF	ERIC GREGORY
HUMAN RESOURCE SPECIALIST		DEPUTY	
TRAINING SPECIALIST		TIME UNIT	CAITLIN HARRIS (T)
GIS SPECIALIST	MICHAEL KNIGHT (T)	PROCUREMENT UNIT	
TECHNOLOGY SUPPORT SPECIALIST		COMPENSATION UNIT	
INCIDENT METEOROLOGIST		COST UNIT	JACOB CHAFFIN (V)
<b>6. Logistics Section:</b>		EQUIPMENT TIME RECORDER	SHANNON CALABRO (T)
CHIEF	RANDY HICKENBOTTOM		
DEPUTY	JAMIE RIETZ		
ORDERING	HEIDI ZARDUS		
FACILITIES UNIT	KEN (TAZ) WILLIAMS		
GROUND SUPPORT UNIT			
COMMUNICATIONS UNIT			
MEDICAL UNIT			
SECURITY UNIT			
FOOD UNIT			
<b>7. Operations Section:</b>			
<b>9. Prepared By:</b>	<b>Name:</b> STAN MITCHEM	<b>Position/Title:</b> PSC3	<b>Signature:</b>
ICS 203	IAP Page	Date/Time: 09/12/2023 1700	

# Light House Canyon

National Weather Service Salt Lake City

2023-09-12 5:53 PM MDT

Spot Forecast for Light House Canyon...BLM  
National Weather Service Salt Lake City UT  
553 PM MDT Tue Sep 12 2023

Forecast is based on forecast start time of 1800 MDT on September 12.  
If conditions become unrepresentative...contact the National Weather Service.

.DISCUSSION...Seeing a few showers lingering around the fire early this evening, with these expected to diminish with the loss of daytime heating. The airmass over the area remains moist and unstable tomorrow, resulting in another round of showers and thunderstorms tomorrow with a decent chance of wetting rains. A weak trough will cross northern Utah Wednesday night into Thursday, bringing some cooling behind it as well as a drying trend heading into the weekend.

.WEDNESDAY...

Sky/weather.....Partly cloudy (55-65 percent cloud cover).  
Chance of rain showers early in the afternoon.  
Chance of thunderstorms in the afternoon. Rain showers likely late in the afternoon.

CWR.....35 percent.  
Chance of pcpn.....60 percent.  
LAL.....1 until 1200, then 4.  
Max temperature.....68-72.  
Min humidity.....42-46 percent.  
Wind (20 ft).....Upslope/upvalley winds 3-7 mph. Gusty and erratic winds expected near thunderstorms in the afternoon.  
Transport winds.....Southwest 9 to 12 mph.  
Haines Index.....3.

.WEDNESDAY NIGHT...

Sky/weather.....Partly cloudy (60-70 percent cloud cover).  
Chance of thunderstorms early in the evening.  
Chance of rain showers through the night.  
Slight chance of thunderstorms in the late evening and overnight.

CWR.....15 percent.  
Chance of pcpn.....50 percent.  
LAL.....4 until 2100, then 2.  
Min temperature.....54-56.  
Max humidity.....66-68 percent.  
Wind (20 ft).....Southwest winds 7-9 mph becoming north 5-8 mph in the late evening and overnight. Gusty and erratic winds expected near thunderstorms early in the evening. Gusty and erratic winds expected near thunderstorms in the late evening and overnight.  
Transport winds.....Northwest 8 to 10 mph.  
Haines Index.....3.

\$\$

Forecaster...Traphagan  
Requested by...Desi Calvert



**Division/Group Assignment List (ICS 204 WF)**  
**Controlled Unclassified Information//Basic**

<b>1. Incident Name:</b>			<b>3.</b>			
LIGHT HOUSE CANYON			<b>Branch:</b>		<b>Division/Group</b>	
<b>2. Operational Period: DAY</b>					<b>ALPHA</b>	
Date/Time From: 09/13/2023 0600	WED	Date/Time To: 09/13/2023 2200				
<b>4. Operations Personnel</b>						
<b>OPERATIONS CHIEF</b>		PHIL LIND CHRIS VERO		<b>BRANCH DIRECTOR</b>		
<b>DIVISION/GROUP SUPERVISOR</b>		JEFF RUNK NICK TURCO (T)		<b>AIR ATTACK SUPERVISOR</b>		
<b>5. Resources Assigned this Period</b>						
Strike Team / Task Force / Resource Designator		LWD	Leader	Number Persons	Drop Off PT./Time	Pick Up PT./Time
ENG3 UTWDD ENGINE 2334 E-5		09/17	CASH JESSOP	3		
ENG6 UTGRD E8621 E-9		09/20	TERANCE KIM	3		
SMIA SMOKEJUMPERS A-23		09/20	LOGAN BOSAK	14		
TFLD BRIAN BORNONG O-13		09/20		1		
SOFR BRENT VAN GUNDY O-17		09/23		1		
EMTF WILDERNESS MEDICS, EMTF O-16		09/19	ADRIAN MARNELL	1		
<b>6. Control Operations/Work Assignments:</b>						
<b>Task:</b> Secure edge from Div A/M break to Div A/Z break.						
<b>Purpose:</b> Eliminate threats of fire growth on Div A, establish containment lines.						
<b>End State:</b> Div A in monitor status, resources dedicated to higher priority.						
<b>7. Special Instructions:</b>						
<b>8. Division/Group Communication Summary</b>						
Function	Channel	RX Frequency N/W	RX Tone/NAC	TX Frequency N/W	TX Tone/NAC	Mode
COMMAND	TAVAPUTS	172.6750		164.4750	136.5	
TACTICAL	TAC 7	169.1875		169.1875		
AIR TO GROUND	PRIMARY	167.9500		167.9500		
AIR TO GROUND	SECONDARY	168.4000		168.4000		
<b>9. Prepared By (Resource Unit Leader)</b>			<b>Approved By (Planning Section Chief)</b>		<b>Date</b>	<b>Time</b>
			STAN MITCHEM		09/12/2023	1630

## Division/Group Assignment List (ICS 204 WF)

Controlled Unclassified Information//Basic

<b>1. Incident Name:</b>			<b>3.</b>			
LIGHT HOUSE CANYON			<b>Branch:</b>		<b>Division/Group</b>	
<b>2. Operational Period:</b> DAY						
Date/Time From: 09/13/2023 0600 WED		Date/Time To: 09/13/2023 2200 WED		<b>MIKE</b>		
<b>4. Operations Personnel</b>						
<b>OPERATIONS CHIEF</b>		PHIL LIND CHRIS VERO		<b>BRANCH DIRECTOR</b>		
<b>DIVISION/GROUP SUPERVISOR</b>		RUSS WENKE TAYLOR FORD (T)		<b>AIR ATTACK SUPERVISOR</b>		
<b>5. Resources Assigned this Period</b>						
Strike Team / Task Force / Resource Designator		LWD	Leader	Number Persons	Drop Off PT./Time	Pick Up PT./Time
CR2I SHORELINE C-1		09/21	CONNER BRADLEY	20		
REAF			DAKOTA RAY	1		
REAF			JASON CARLITE (T)	1		
<b>6. Control Operations/Work Assignments:</b>						
<p><b>Task:</b> Strengthen control lines along Range Valley MT Road preventing additional spread.  <b>Purpose:</b> Keep fire contained within burn perimeter to protect values at risk.  <b>End State:</b> Minimal impact to private land and threatened value at risk on Tavaputs plateau.</p>						
<b>7. Special Instructions:</b>						
Personel may be pulled off the line if significant precipitation occurs.						
<b>8. Division/Group Communication Summary</b>						
Function	Channel	RX Frequency N/W	RX Tone/NAC	TX Frequency N/W	TX Tone/NAC	Mode
COMMAND	TAVAPUTS	172.6750		164.4750	136.5	
TACTICAL	TAC 7	169.1875		169.1875		
AIR TO GROUND	PRIMARY	167.9500		167.9500		
AIR TO GROUND	SECONDARY	168.4000		168.4000		
<b>9. Prepared By (Resource Unit Leader)</b>			<b>Approved By (Planning Section Chief)</b>		<b>Date</b>	<b>Time</b>
			STAN MITCHEM		09/12/2023	1630



**Division/Group Assignment List (ICS 204 WF)**  
**Controlled Unclassified Information//Basic**

<b>1. Incident Name:</b>				<b>3.</b>		
LIGHT HOUSE CANYON				Branch:	Division/Group  <b>ZULU</b>	
<b>2. Operational Period: DAY</b>						
Date/Time From: 09/13/2023 0600 WED		Date/Time To: 09/13/2023 2200 WED				
<b>4. Operations Personnel</b>						
<b>OPERATIONS CHIEF</b>		PHIL LIND CHRIS VERO		<b>BRANCH DIRECTOR</b>		
<b>DIVISION/GROUP SUPERVISOR</b>		GABE HARRY BEN AGOL (T)		<b>AIR ATTACK SUPERVISOR</b>		
<b>5. Resources Assigned this Period</b>						
Strike Team / Task Force / Resource Designator		LWD	Leader	Number Persons	Drop Off PT./Time	Pick Up PT./Time
CR2I NORTHERN UTAH REGULARS C-2		09/22	TAYLOR FORD	22		
ENG4 UTSLD E2424 E-15		09/24	RYAN SCROGGIN	4		
ENG6 CARBON/EMERY 681 E-7		09/20	JERMIC JORGENSON	2		
ENG6 UTMOD E6618 MONTICELLO E-8		09/11	GARRETT SPENCE	3		
ENG6 UTGRD E8611 E-11		09/20	MATT SPECHT	2		
WTS2 UT-MOD WT6911 E-10		09/20	CHRIS MARLOR	1		
WTS2 WATERBOYZ 911 E-6		09/22	ANGEL MARTIN	1		
SOFR BRENT VAN GUNDY O-17		09/22		1		
EMTF WILDERNESS MEDICS, EMTF O-16		09/19	ADRIAN MARNELL	1		
<b>6. Control Operations/Work Assignments:</b>						
<b>Task:</b> Strengthen control line around burnout units Blocks 3-4-5-6.						
<b>Purpose:</b> Return a defensible barrier against potential blowout of Lighthouse Canyon.						
<b>End State:</b> Burned unit holding fire in wilderness area [fire contained within burnout perimeter].						
<b>7. Special Instructions:</b>						
<b>8. Division/Group Communication Summary</b>						
Function	Channel	RX Frequency N/W	RX Tone/NAC	TX Frequency N/W	TX Tone/NAC	Mode
COMMAND	TAVAPUTS	172.6750		164.4750	136.5	
TACTICAL	TAC 2	166.9625		166.9625		
AIR TO GROUND	PRIMARY	167.9500		167.9500		
AIR TO GROUND	SECONDARY	168.4000		168.4000		
<b>9. Prepared By (Resource Unit Leader)</b>			<b>Approved By (Planning Section Chief)</b>		<b>Date</b>	<b>Time</b>
			STAN MITCHEM		09/12/2023	1630

# AIR OPERATIONS SUMMARY (ICS 220)

<b>1. Incident Name:</b> Lighthouse Canyon		<b>2. Operational Period:</b> Date From: 09/13/2023 Time From: 0700		<b>3. Sunrise:</b> 07:02		<b>Sunset:</b> 19:37			
<b>4. Remarks (safety notes, hazards, air operations special equipment, etc.):</b>  Pumpkin Time: 20:07  Order all Aircraft through the Price Helibase on Command.		<b>5. Ready Alert Aircraft:</b> Medivac: TBD New Incident: TBD		<b>6. Temporary Flight Restriction Number:</b> Altitude: 13,000ft Center Point: 39°26.57x110°08.32/ 7NM					
		<b>8. Frequencies:</b>		<b>9. Fixed-Wing (category/kind/type, make/model, N#, base):</b>					
		AM		FM					
		Air/Air Fixed-Wing		120.45 P 118.25 S		Air Tactical Group Supervisor Aircraft:			
		Air/Air Rotary-Wing – Flight Following		120.45 P 118.25 S		80K			
		Air/Ground Primary				167.9500		1PB	
		Air/Ground Secondary				168.4000		Other Fixed-Wing Aircraft:	
		Deck Coordinator				163.1000			
		Unicom				122.80			
		Air Guard				168.6250 Tx 110.9			
<b>10. Helicopters (use additional sheets as necessary):</b>									
FAA N#	Category/Kind/Type	Make/Model	Base	Available	Start	Remarks			
13CK	TYPE 1	S61	Price Helibase	0800-2000	0700	TANKED			
74TH	TYPE 1	KMAX	Price Helibase	0800-2000	0700	BUCKET			
17FH	TYPE 1	UH60A+	Price Helibase	0800-2000	0700	EU,PAX,BUCKET			
29HT	TYPE 2	205A++	Price Helibase	0800-2000	0700	EU,PAX,BUCKET			
31BH	TYPE 3	AS350B3	Price Helibase	0800-2000	0700	EU,STEP,PAX,BUCKET			
<b>11. Prepared by:</b> Name: Jack Townsend      Position/Title: Air Ops (T)      Signature: JACK TOWNSEND									
ICS 220, Page 1      Date/Time: 09/12/2023 1500									

Digitally signed by JACK TOWNSEND  
Date: 2023.09.12 14:53:34 -08'00'



# HEALTH AND SAFETY MESSAGE

*SAFETY* starts with *YOU*

We are **ALL** accountable for **SAFE** behaviors

For DAY Operations: September 13, 2023

INCIDENT: <b>Light House Canyon</b>	DATE: September 12, 2023,      TIME: 1300
-------------------------------------	---

## Major Hazards and Risks:

- **EXTREME FIRE BEHAVIOR:** Read and understand weather and fire behavior forecasts. Be aware at all times of current and potential fire behavior and adjust tactics accordingly. Plan ahead and be prepared to disengage early.
- **COMMUNICATIONS:** Make sure you have established clear communications with assigned and adjacent resources. Know the Communications Plan and also what to do in the event of a medical emergency (see Medical Plan).
- **DRIVING:** Drive defensively at all times and maintain safe vehicle separation distances. Keep head lights on and use emergency lighting where appropriate. Use spotters when backing or in tight areas. Keep stopping distance ½ your sight distance
- **Aerial Delivered Retardant/Water Drops:** Review pages 73 through 74 in IRPG.

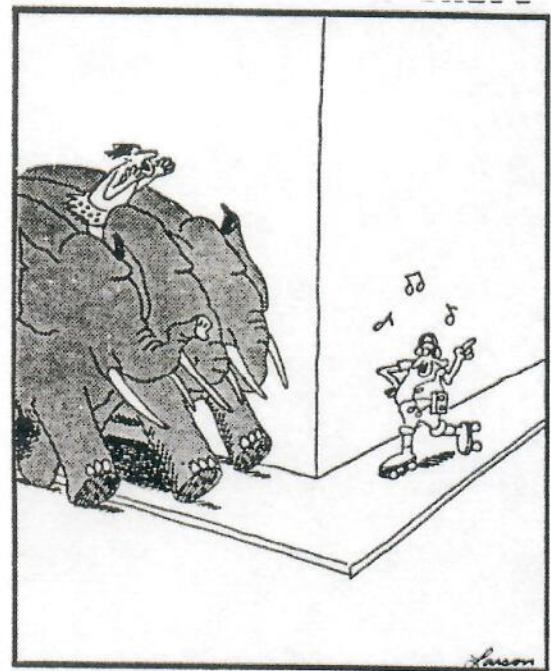
Don't Forget: BE ALERT = Situation Awareness; KEEP CALM = Leadership; THINK CLEARLY = Risk Management; ACT DECISIVELY= Confidence

### Operational Leadership

Wildland Fire Leadership Values and Principles	
Values	Principles
Duty	Be proficient in your job, both technically and as a leader. Make sound and timely decisions. Ensure tasks are understood, supervised, and accomplished. Develop your subordinates for the future.
Respect	Know your subordinates and look out for their well-being. Keep your subordinates informed. Build the team. Employ your subordinates in accordance with their capabilities.
Integrity	Know yourself and seek improvement. Seek responsibility and accept responsibility for your actions. Set the example.

**Refer to IRPG, pages vi-viii**

### Situational Awareness



Brian has a rendezvous with destiny.

**Don't be a "Brian" -- Maintain your situational awareness at all times!**

**EACH INDIVIDUAL, ESPECIALLY SUPERVISORS, MUST HAVE, RECOGNIZE AND REDEEM THEIR SAFETY RESPONSIBILITIES (Fireline Handbook, page 44)**

**THANKS FROM YOUR SAFETY TEAM!**



## **Light House Canyon Wildfire Accident Incident within the Incident**

The **Incident Commander** is responsible for overall action in case of a serious accident.

Upon occurrence of a “**RED or YELLOW**” accident (IWI) involving significant injury or fatality on the Fireline, the highest qualified person (IWI IC) on scene shall take control of the situation until the nearest **Division Supervisor** arrives on scene to assume control.

Immediate and clear communication will be established between Operations and division Group Supervisor to determine who can arrive at the scene the quickest and gain control of the situation. In the event of a IWI in camp or incident roads, on-site personnel shall take control until a **Operation Chief** or **Division Supervisor** arrives or **Local Law Enforcement** have assumed control.

The IWI IC will radio Moab Dispatch on Tavaputs Repeater (Channel 4) and report “**Medical Emergency**” and relay information using the Medical Incident Report form. If Forest Repeater are unavailable and cellphone service available call Moab Dispatch at (435) 259-1850. If IWI happens after Dispatch hours, call Carbon County Dispatch Center at (435) 637-0890.

Upon arrival at the scene, whoever has been designated to manage the situation (OPS or DVS) should take immediate action to:

- . Obtain and facilitate Medics to the scene – notify them you are in charge.
- . Co-ordinate and facilitate appropriate transportation for the injured.
- . Move all unnecessary personnel from the accident scene.
- . Secure the scene area and identify witnesses for investigation.

Immediately upon notification of the IWI requiring emergency action the **Incident Commander, Medical Unit Leader, and Safety Officer** will respond to the front office (where base radio is). If available in camp the **Operation, Plans, Logistics, and Finance Section Chiefs and Information Officer** will respond to outside of the front office.

The **Line Safety Officer** responds immediately to the scene of the accident to assist the Operations Chief or Division Group Supervisor and shall be responsible for initiating the proper investigation and documentation by qualified personal.



The **Logistics Chief** shall attempt to control external communications, phone and radio. All information released from the incident shall be through the incident Information Officer with approval of the Incident Commander.

The **Incident Commander** will contact the Agency Administrator who in turn contact appropriate officials of the agency. If the accident involves a fatality, the Agency Administrator will contact the Sherrif's Office, the coroner's Office and the employing agency of the victim and will find out who will contact the family members. The Plans Chief will assure that an individual is assigned to document all communications regarding the accident.

At no time during the accident/fatality evacuation process will the name of the victim(s) be used.

The need of a *Critical Incident Stress Debriefing* for the incident personnel will be discussed by the Core Team with input from the Medical Unit Leader, the Human Resource specialist, and local / involved individuals. The Incident Commander will approve such debriefings.

# LIGHT HOUSE CANYON FINANCE PROCEDURES

Finance Email: [2023.lighthousecanyon.finance@firenet.gov](mailto:2023.lighthousecanyon.finance@firenet.gov)

307-760-1653



Please use the above email, or scan the QR code, to email any CTRs, Shift Tickets, and Contract information to us. Please include your RO# in the subject line and on all documents.

Please make sure to put your phone number and email on all CTRs and STs.

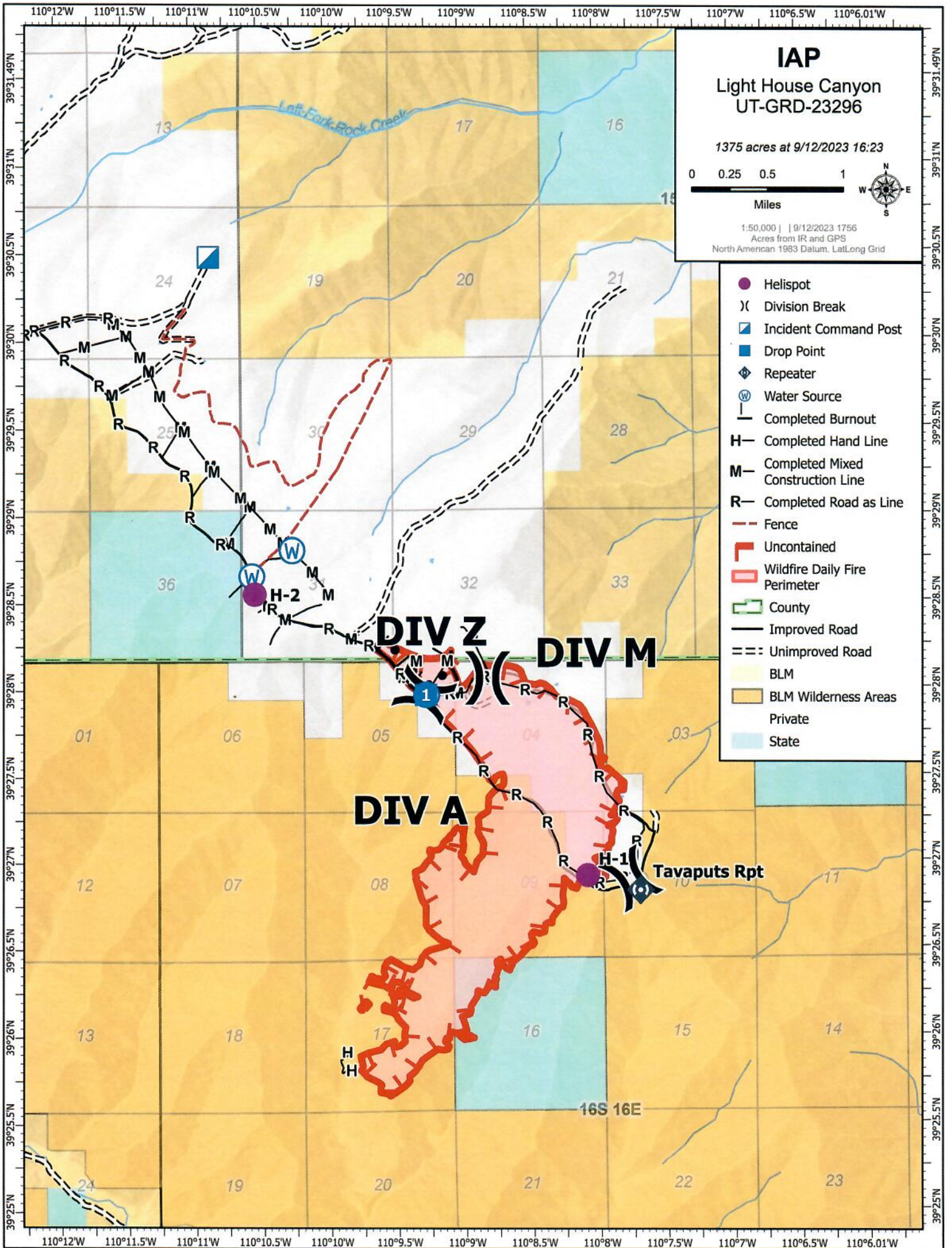
Please feel to email or call us with any questions you may have. 😊

Have you checked in yet? Have you submitted your finance documents (resource order, AD casual hire form, manifest/roster, contract/agreement, vehicle inspection)? NOW IS THE TIME!

Thank You- We look forward to working with you!!!!









# Medical Plan (ICS 206 WF)

Incident/Project Name	1. Operational Period
<b>Light House Canyon</b>	Date/Time 09/11/2023 0600hrs - 2200hrs

2. Ambulance Services			
Name	Complete Address	Phone	Advanced Life Support Yes      No
Carbon County EMS	Price, UT	435-636-3251	X
Emery County EMS	435-381-2404	435-381-2404	X

3. Air Ambulance Services			
Name	Phone	Type of Aircraft & Capability	Advanced Life Support Yes      No
IHC Lifeflight	800-321-1911	Augusta K2/Hoist + Night Vision + 2PT.	X
Classic Air Med	800-444-9223	Bell 407/Back Country LZ + Night Vision	X

4. Hospitals								
Hospital	Lat/Long		Travel Time		Phone	Helipad		Level of Care Facility
			Air	Grnd		Yes	No	
Castle View Hospital Price UT.	Lat:		35NM	55mi. 2.5hrs.	435-637-4800	<input checked="" type="checkbox"/>	<input type="checkbox"/>	Level 4 Trauma Center
	Long:							
Utah Valley Regional Hospital Provo, UT	Lat:		63NM From Price, UT	77mi. 1.25hrs. From Price, UT	801-357-7850	<input checked="" type="checkbox"/>	<input type="checkbox"/>	Level 2 Trauma Center
ST. Mary's Hospital Grand Junction, CO.			126NM From Price, UT	165mi. 2.5hrs. From Price, UT.	970-298-2273	X		Level 2 Trauma Center
University of Utah Medical Center SLC.	Lat:		96NM From Price, UT	121mi. 2hrs. From Price, UT	801-581-2121	<input checked="" type="checkbox"/>	<input type="checkbox"/>	Burn Center
	Long:							

5. Division   Branch   Group	Name, Capability, and Phone	Location	ALS	BLS
Div A, Z, M	Adrian Marnell		<input type="checkbox"/>	X

6. Prepared By (Medical Unit Leader)	7. Date/Time	8. Reviewed By (Safety Officer)	9. Date/Time
Wynn Whitmeyer, SOFR-T	09/10/23	Mark Haines, SOFR	9/10/2023

**IWI IC Responsibilities:  
Radio MOAB Dispatch to alert of medical incident.**

1. Take charge of the scene, **establish an IWI IC.**
2. **Administer first aid to the firefighter. Determine the severity of the injury: Green-Yellow-Red**
3. Contact MOAB Dispatch on Repeater Channel to relay 8-line.
4. Contact Appropriate Moose EMS Resource on Command and **request response to IWI location or nearest intersection.**





# MEDICAL PLAN (ICS 206 WF)

Controlled Unclassified Information//Basic

## Medical Incident Report

**FOR A NON-EMERGENCY INCIDENT, WORK THROUGH CHAIN OF COMMAND TO REPORT AND TRANSPORT INJURED PERSONNEL AS NECESSARY.**

**FOR A MEDICAL EMERGENCY: IDENTIFY ON-SCENE INCIDENT COMMANDER BY NAME AND POSITION AND ANNOUNCE "MEDICAL EMERGENCY" TO INITIATE RESPONSE FROM IMT COMMUNICATIONS/DISPATCH.**

**Use the following items to communicate situation to communications/dispatch.**

**1. CONTACT COMMUNICATIONS / DISPATCH (Verify correct frequency prior to starting report)**

*Ex: "Communications, Div. Alpha. Stand-by for Emergency Traffic."*

**2. INCIDENT STATUS: Provide incident summary (including number of patients) and command structure.**

*Ex: "Communications, I have a Red priority patient, unconscious, struck by a falling tree. Requesting air ambulance to Forest Road 1 at (Lat./Long.) This will be the Trout Meadow Medical, IC is TFLD Jones. EMT Smith is providing medical care."*

Severity of Emergency / Transport Priority	<input type="checkbox"/> <b>RED / PRIORITY 1 Life or limb threatening injury or illness. Evacuation need is IMMEDIATE</b> <i>Ex: Unconscious, difficulty breathing, bleeding severely, 2<sup>o</sup> – 3<sup>o</sup> burns more than 4 palm sizes, heat stroke, disoriented.</i>	
	<input type="checkbox"/> <b>YELLOW / PRIORITY 2 Serious Injury or illness. Evacuation may be DELAYED if necessary.</b> <i>Ex: Significant trauma, unable to walk, 2<sup>o</sup> – 3<sup>o</sup> burns not more than 1-3 palm sizes.</i>	
	<input type="checkbox"/> <b>GREEN / PRIORITY 3 Minor Injury or illness. Non-Emergency transport</b> <i>Ex: Sprains, strains, minor heat-related illness.</i>	
Nature of Injury or Illness & Mechanism of Injury		<i>Brief Summary of Injury or Illness (Ex: Unconscious, Struck by Falling Tree)</i>
Evacuation Request		<i>Air Ambulance / Short Haul/Hoist Ground Ambulance / Other</i>
Patient Location		<i>Descriptive Location &amp; Lat. / Long. (WGS84)</i>
Incident Name		<i>Geographic Name + Medical (Ex: Trout Meadow Medical)</i>
On-Scene Incident Commander		<i>Name of on-scene IC of Incident within an Incident (Ex: TFLD Jones)</i>
Patient Care		<i>Name of Care Provider (Ex: EMT Smith)</i>

**3. INITIAL PATIENT ASSESSMENT: Complete this section for each patient as applicable (start with the most severe patient)**

Patient Assessment: See IRPG PAGE 106

Treatment:

**4. EVACUATION PLAN:**

Evacuation Location (if different): (Descriptive Location (drop point, intersection, etc.) or Lat. / Long.) Patient's ETA to Evacuation Location:

Helispot / Extraction Site Size and Hazards:

**5. ADDITIONAL RESOURCES / EQUIPMENT NEEDS:**

*Example: Paramedic/EMT, crews, immobilization devices, AED, oxygen, trauma bag, IV/fluid(s), splints, rope rescue, wheeled litter, HAZMAT, extrication*

**6. COMMUNICATIONS: Identify State Air/Ground EMS Frequencies and Hospital Contacts as applicable**

Function	Channel Name/Number	Receive (RX)	Tone/NAC *	Transmit (TX)	Tone/NAC *
COMMAND					
AIR-TO-GRND					
TACTICAL					

**7. CONTINGENCY: Considerations: If primary options fail, what actions can be implemented in conjunction with primary evacuation method? Be thinking ahead..**

**8. ADDITIONAL INFORMATION: Updates/Changes, etc.**

**REMEMBER: Confirm ETAs of resources ordered. Act according to your level of training. Be Alert. Keep Calm. Think Clearly. Act Decisively.**