

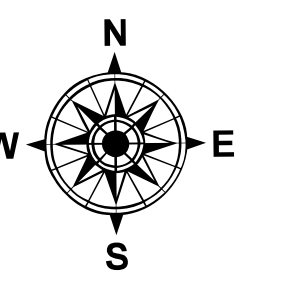
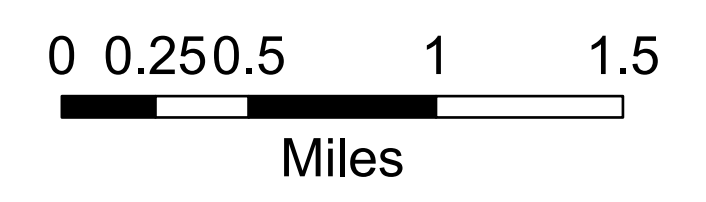
Air Ops

Light House Canyon

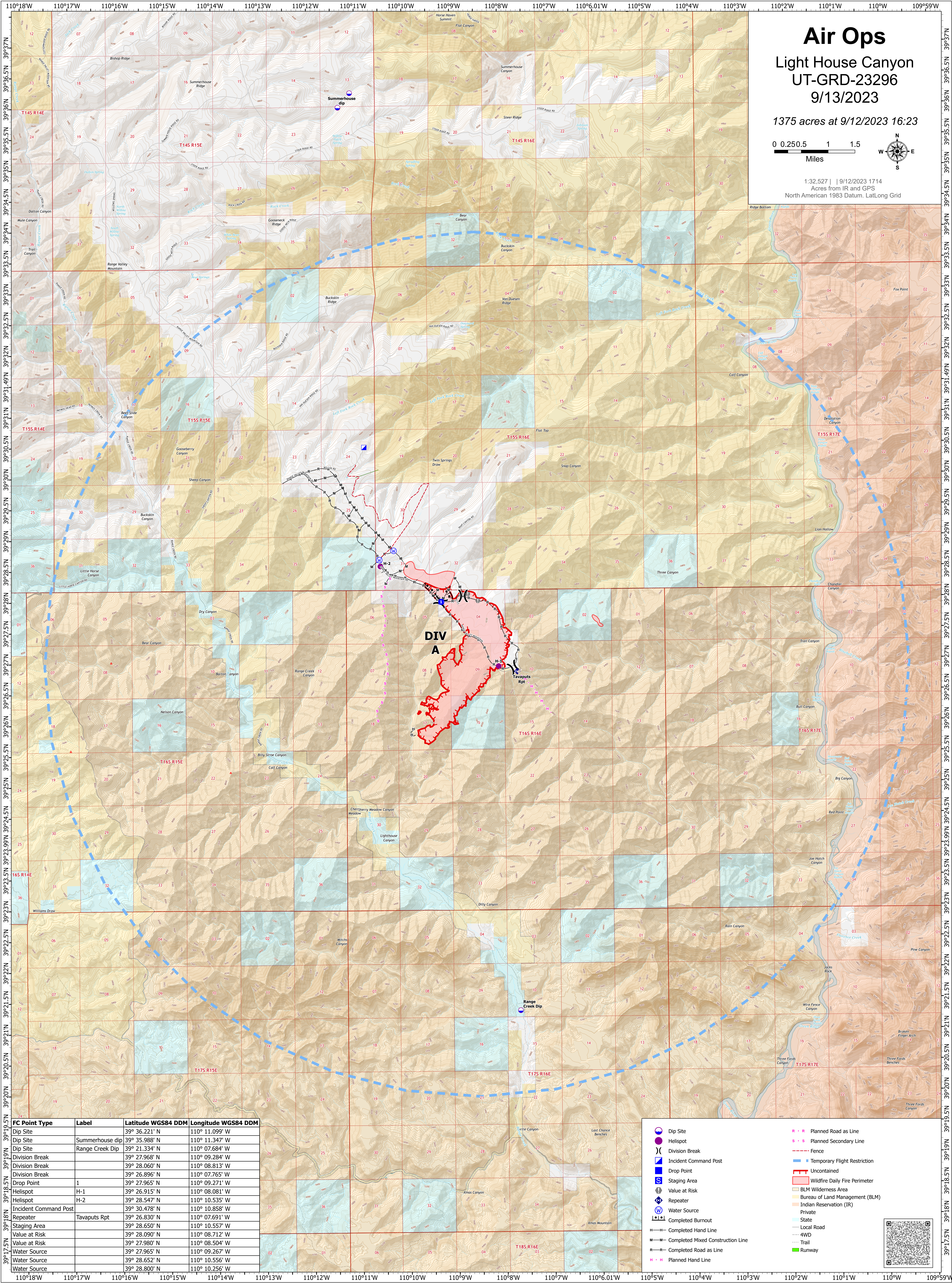
UT-GRD-23296

9/13/2023

1375 acres at 9/12/2023 16:23



1:32,527 | 9/12/2023 1714
Acres from IR and GPS
North American 1983 Datum, LatLong Grid



DIV A

FC Point Type	Label	Latitude WGS84 DDM	Longitude WGS84 DDM
Dip Site		39° 36.221' N	110° 11.099' W
Dip Site	Summerhouse dip	39° 35.988' N	110° 11.347' W
Dip Site	Range Creek Dip	39° 21.334' N	110° 07.684' W
Division Break		39° 27.968' N	110° 09.284' W
Division Break		39° 28.060' N	110° 08.813' W
Division Break		39° 26.896' N	110° 07.765' W
Drop Point	1	39° 27.965' N	110° 09.271' W
Helispot	H-1	39° 26.915' N	110° 08.081' W
Helispot	H-2	39° 28.547' N	110° 10.535' W
Incident Command Post		39° 30.478' N	110° 10.858' W
Repeater	Tavaputs Rpt	39° 26.830' N	110° 07.691' W
Staging Area		39° 28.650' N	110° 10.557' W
Value at Risk		39° 28.090' N	110° 08.712' W
Value at Risk		39° 27.980' N	110° 08.504' W
Water Source		39° 27.965' N	110° 09.267' W
Water Source		39° 28.652' N	110° 10.556' W
Water Source		39° 28.800' N	110° 10.256' W

- Dip Site
- Helispot
- Division Break
- Incident Command Post
- Drop Point
- Staging Area
- Value at Risk
- Repeater
- Water Source
- Completed Burnout
- Completed Hand Line
- Completed Mixed Construction Line
- Completed Road as Line
- Planned Hand Line
- Planned Road as Line
- Planned Secondary Line
- Fence
- Temporary Flight Restriction
- Uncontained
- Wildfire Daily Fire Perimeter
- BLM Wilderness Area
- Bureau of Land Management (BLM)
- Indian Reservation (IR)
- Private
- State
- Local Road
- 4WD
- Trail
- Runway

