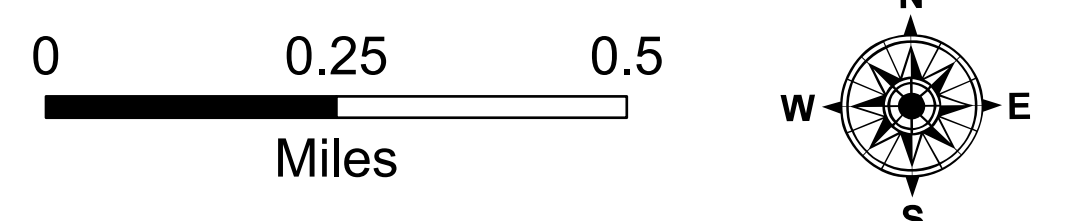


Ortho Ops

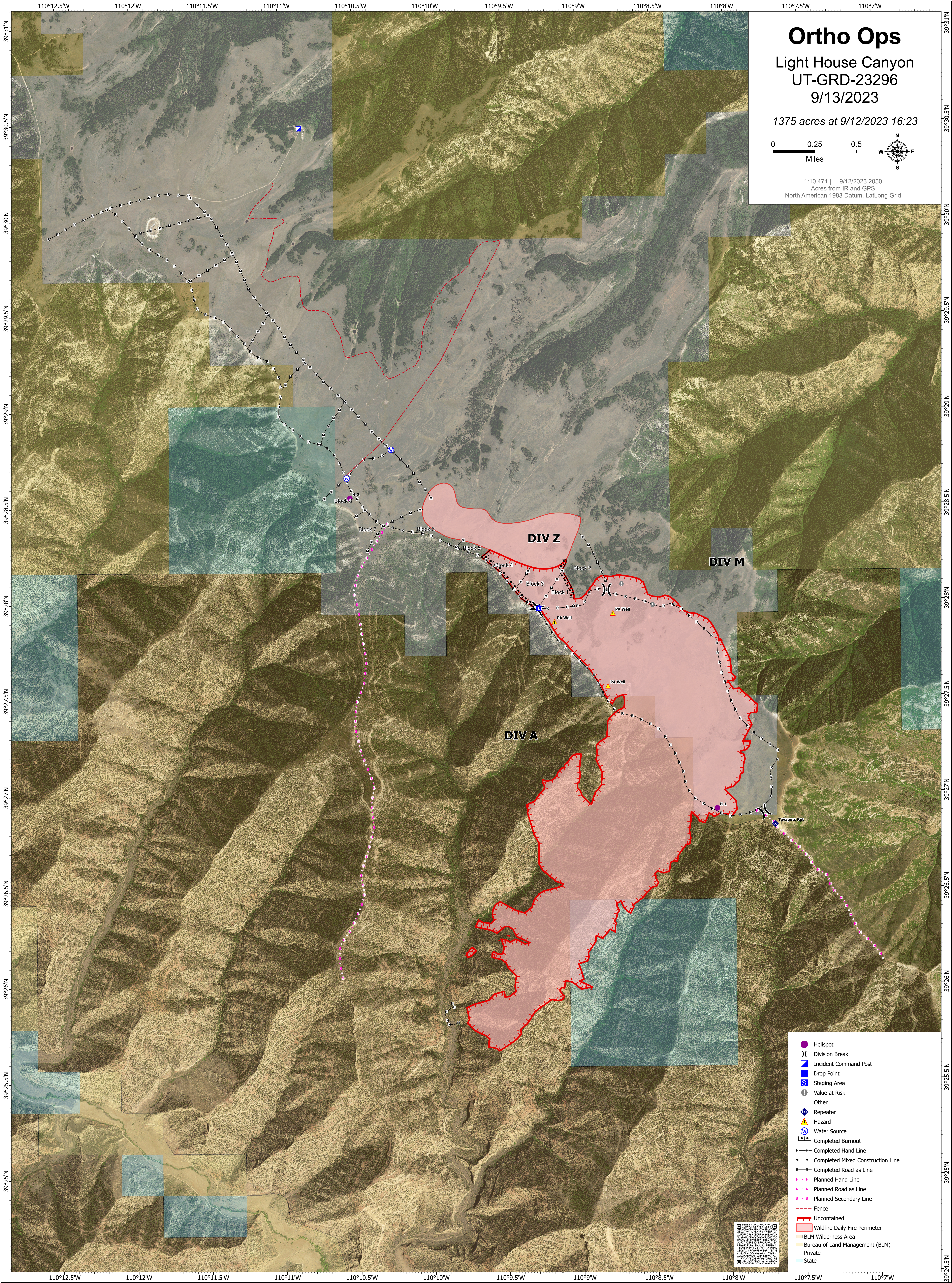
Light House Canyon
UT-GRD-23296

9/13/2023

1375 acres at 9/12/2023 16:23



1:10,471 | 9/12/2023 2050
Acres from IR and GPS
North American 1983 Datum, Lat/Long Grid



- Helispot
-) Division Break
- ▣ Incident Command Post
- ▣ Drop Point
- ▣ Staging Area
- Ⓢ Value at Risk
- Ⓢ Other
- Ⓢ Repeater
- ⚠ Hazard
- Ⓢ Water Source
- Ⓢ Completed Burnout
- Completed Hand Line
- Completed Mixed Construction Line
- Completed Road as Line
- Planned Hand Line
- Planned Road as Line
- Planned Secondary Line
- Fence
- Uncontained
- Wildfire Daily Fire Perimeter
- BLM Wilderness Area
- Bureau of Land Management (BLM)
- Private
- State

