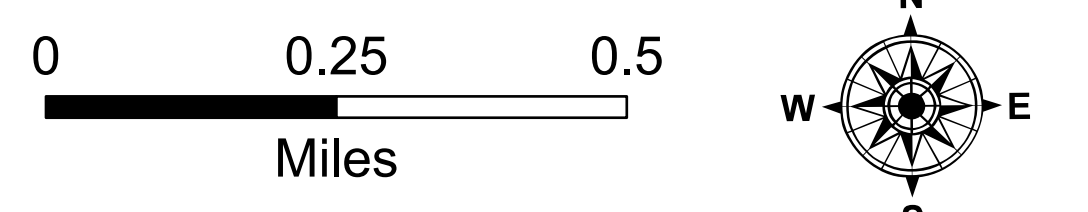


Ortho Ops

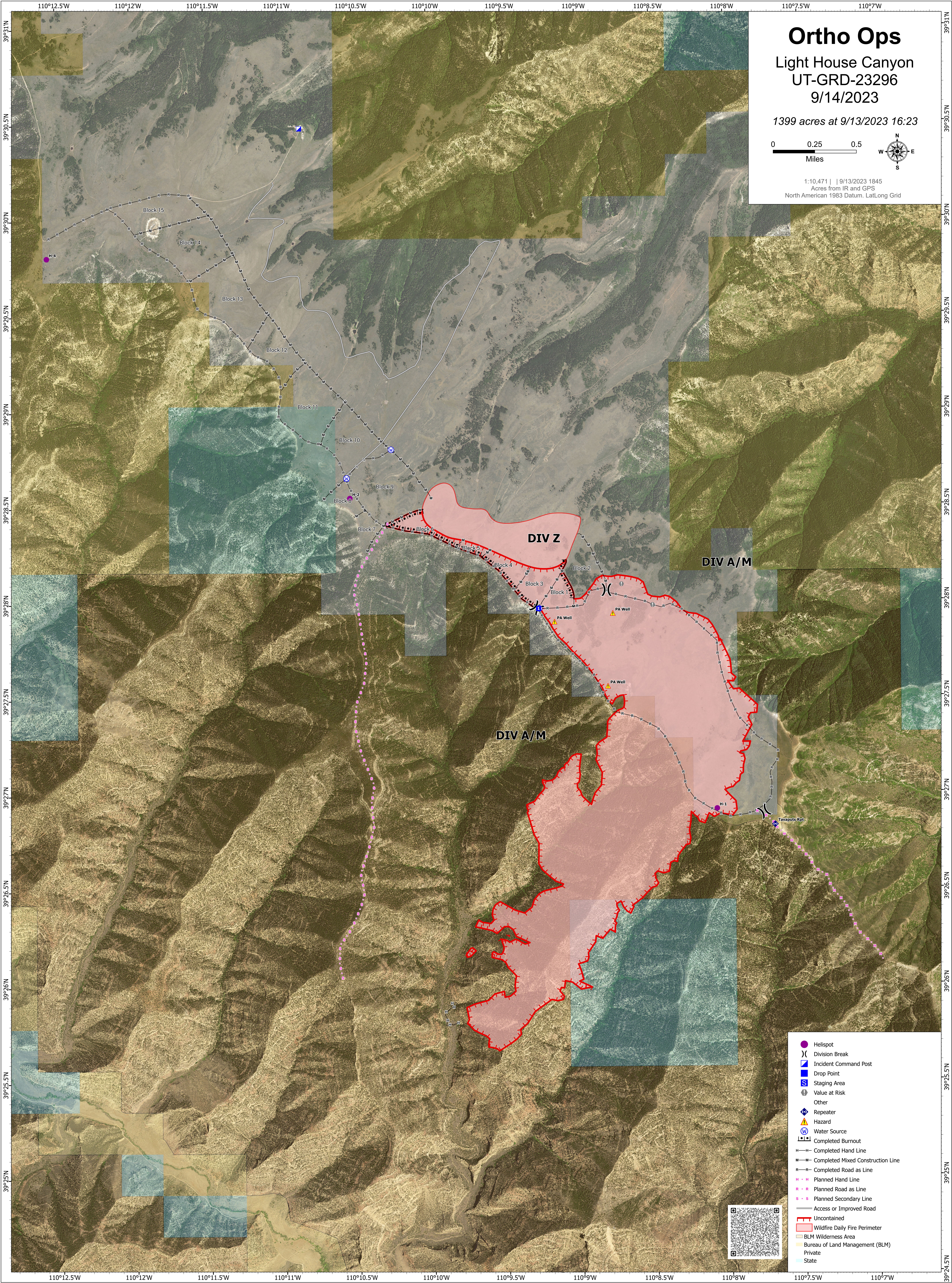
Light House Canyon
UT-GRD-23296

9/14/2023

1399 acres at 9/13/2023 16:23



1:10,471 | 9/13/2023 1845
Acres from IR and GPS
North American 1983 Datum, Lat/Long Grid



DIV Z

DIV A/M

DIV A/M

- Helispot
-) Division Break
- ▢ Incident Command Post
- ▢ Drop Point
- ▢ Staging Area
- Ⓢ Value at Risk
- Ⓢ Other
- Ⓢ Repeater
- ⚠ Hazard
- Ⓢ Water Source
- Ⓢ Completed Burnout
- Completed Hand Line
- Completed Mixed Construction Line
- Completed Road as Line
- Planned Hand Line
- Planned Road as Line
- Planned Secondary Line
- Access or Improved Road
- Uncontained
- ▭ Wildfire Daily Fire Perimeter
- ▭ BLM Wilderness Area
- ▭ Bureau of Land Management (BLM)
- ▭ Private
- ▭ State

