

110°50.5'W 110°49'W 110°47.5'W 110°46'W 110°44.5'W 110°43'W 110°41.5'W 110°40'W 110°38.5'W 110°37'W 110°35.5'W 110°34'W 110°32.5'W 110°31'W 110°29.5'W 110°28'W 110°26.5'W 110°25'W 110°23.5'W 110°22'W 110°20.5'W 110°19'W 110°17.5'W 110°16'W 110°14.5'W 110°13'W 110°11.5'W 110°10'W 110°8.5'W 110°7'W 110°6'W 110°5'W 110°4'W 110°3'W 110°2'W 110°1'W 110°W 109°59'W

# Transportation

## Light House Canyon

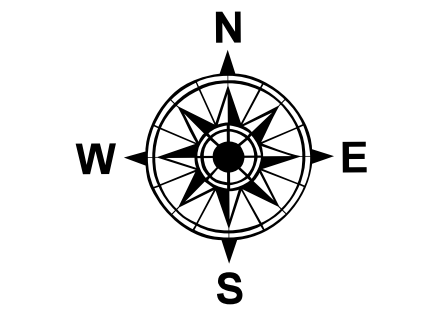
### UT-GRD-23296

9/14/2023

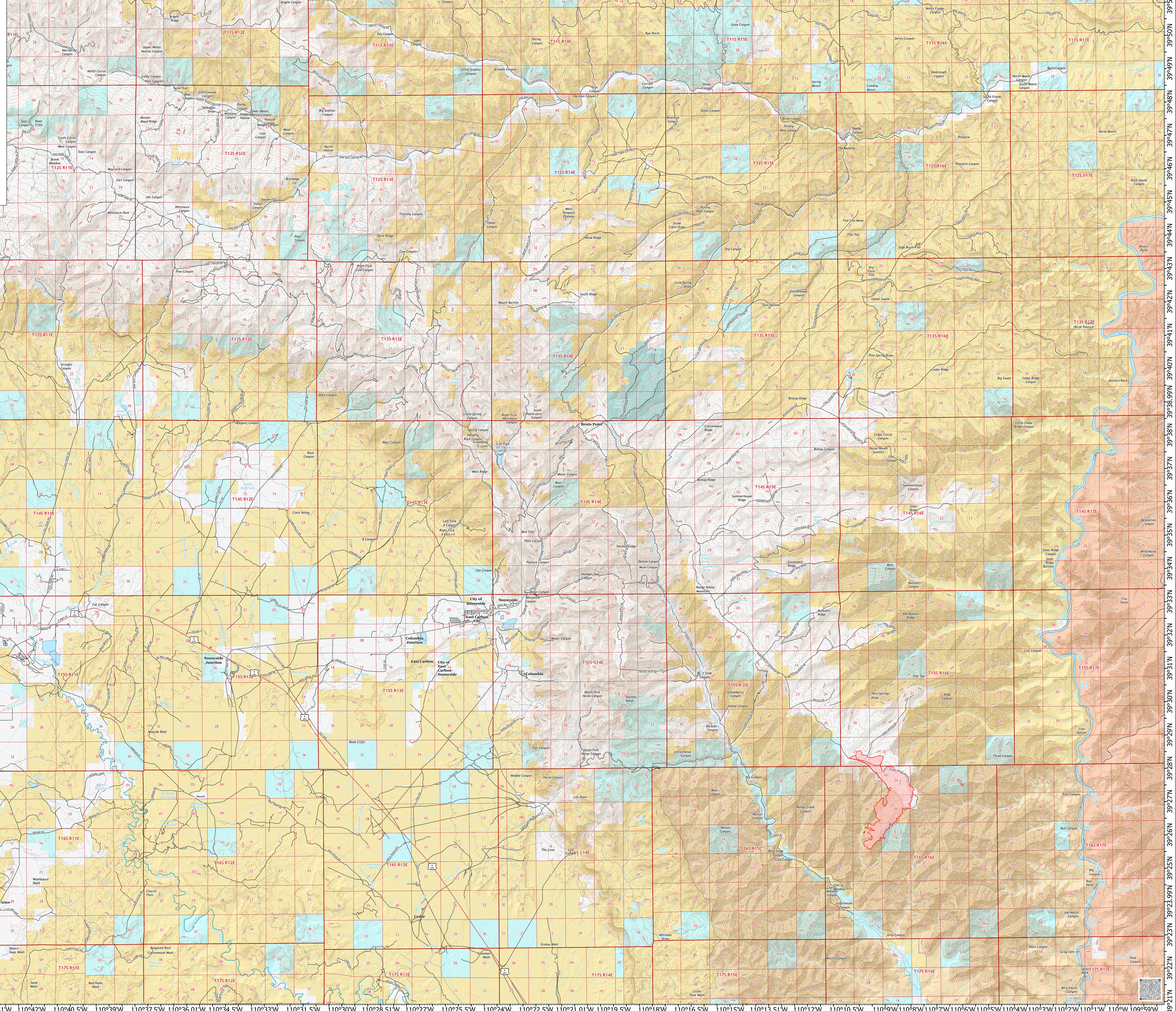
1399 acres at 9/13/2023 16:23

0.255 1 1.5 2 2.5 3 3.5 Miles

1:55,963 | 9/13/2023 1836  
Acres from IR and GPS  
North American 1983 Datum, Lat/Long Grid



- Wildfire Daily Fire Perimeter
- Secondary Hwy
- Local Connector
- Local Road
- Ramp
- AVD
- Trail
- Runway
- Township/Range
- Section
- Pipeline
- Perennial Stream
- Canal/Ditch
- Underground Pipeline
- Intermittent Stream
- Nonperennial Stream
- Nonperennial Shore
- Perennial Lake
- Nonperennial Reservoir
- Perennial Lake
- Hillshade\_045
- Hillshade\_110
- Hillshade\_160
- Hillshade\_200
- Hillshade\_254
- Index
- Intermediate
- Depression Index
- Depression Intermediate
- BLM Wilderness Area
- Bureau of Land Management (BLM)
- Indian Reservation (IR)
- Private
- State
- State Wildlife Reserve/Management Area



110°51.01'W 110°49.5'W 110°48'W 110°46.5'W 110°45'W 110°43.51'W 110°42'W 110°40.5'W 110°39'W 110°37.5'W 110°36.01'W 110°34.5'W 110°33'W 110°31.5'W 110°30'W 110°28.51'W 110°27'W 110°25.5'W 110°24'W 110°22.5'W 110°21.01'W 110°19.5'W 110°18'W 110°16.5'W 110°15'W 110°13.51'W 110°12'W 110°10.5'W 110°9'W 110°8'W 110°7'W 110°6'W 110°5'W 110°4'W 110°3'W 110°2'W 110°1'W 110°W 109°59'W