

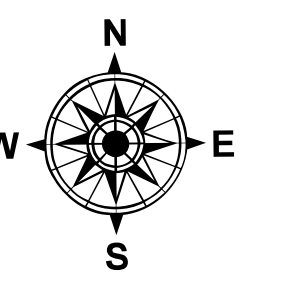
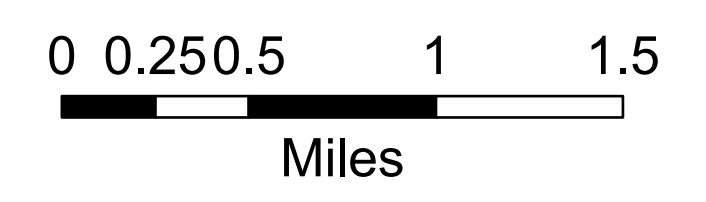
Air Ops

Light House Canyon

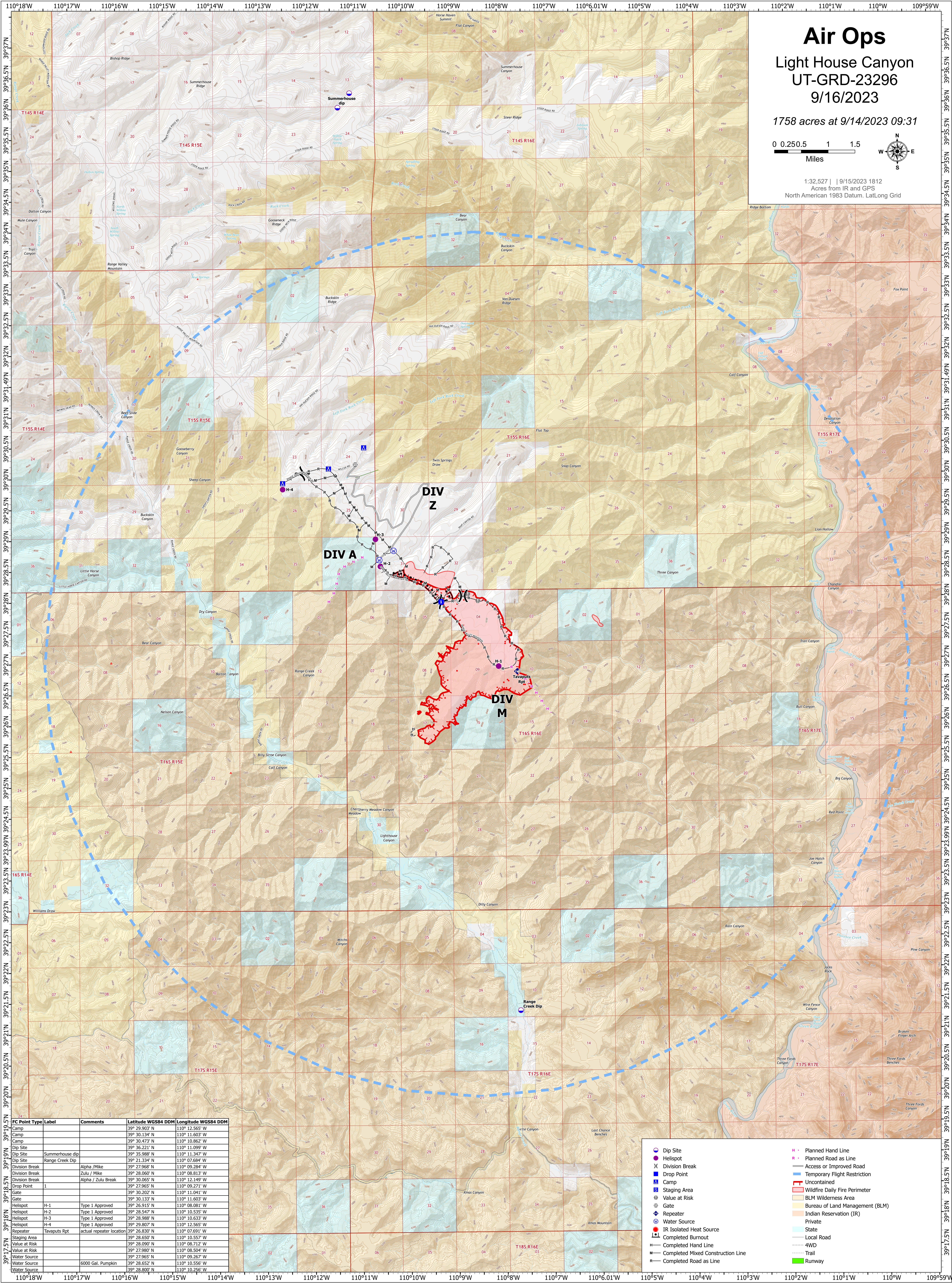
UT-GRD-23296

9/16/2023

1758 acres at 9/14/2023 09:31



1:32.527 | 9/15/2023 1812
Acres from IR and GPS
North American 1983 Datum, LatLong Grid



FC Point Type	Label	Comments	Latitude WGS84 DDM	Longitude WGS84 DDM
Camp			39° 29.903' N	110° 12.565' W
Camp			39° 30.134' N	110° 11.603' W
Camp			39° 30.473' N	110° 10.863' W
Dip Site			39° 36.221' N	110° 11.099' W
Dip Site	Summerhouse dip		39° 35.988' N	110° 11.347' W
Dip Site	Range Creek Dip		39° 21.334' N	110° 07.684' W
Division Break		Alpha / Mike	39° 27.968' N	110° 09.284' W
Division Break		Zulu / Mike	39° 28.060' N	110° 08.813' W
Division Break		Alpha / Zulu Break	39° 30.065' N	110° 12.149' W
Drop Point	1		39° 27.965' N	110° 09.271' W
Gate			39° 30.202' N	110° 11.041' W
Gate			39° 30.133' N	110° 11.603' W
Helispot	H-1	Type 1 Approved	39° 26.915' N	110° 08.081' W
Helispot	H-2	Type 1 Approved	39° 28.547' N	110° 10.535' W
Helispot	H-3	Type 1 Approved	39° 28.988' N	110° 10.633' W
Helispot	H-4	Type 1 Approved	39° 29.807' N	110° 12.565' W
Repeater	Tavaputs Rpt	actual repeater location	39° 26.830' N	110° 07.691' W
Staging Area			39° 28.539' N	110° 10.527' W
Value at Risk			39° 28.090' N	110° 08.712' W
Value at Risk			39° 27.980' N	110° 08.504' W
Water Source			39° 27.965' N	110° 09.267' W
Water Source		6000 Gal. Pumpkin	39° 28.652' N	110° 10.556' W
Water Source			39° 28.800' N	110° 10.256' W

- Dip Site
- Helispot
- Division Break
- Drop Point
- Camp
- Staging Area
- Value at Risk
- Gate
- Repeater
- Water Source
- IR Isolated Heat Source
- Completed Burnout
- Completed Hand Line
- Completed Mixed Construction Line
- Completed Road as Line
- Planned Hand Line
- Access Road as Line
- Access or Improved Road
- Temporary Flight Restriction
- Uncontained
- Wildfire Daily Fire Perimeter
- BLM Wilderness Area
- Bureau of Land Management (BLM)
- Private
- Indian Reservation (IR)
- State
- Local Road
- 4WD
- Trail
- Runway