

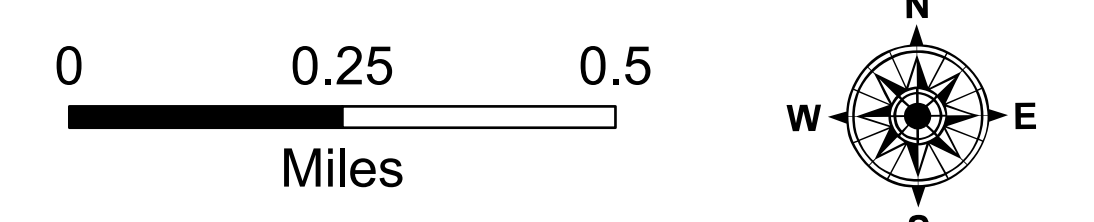
Ops

Light House Canyon

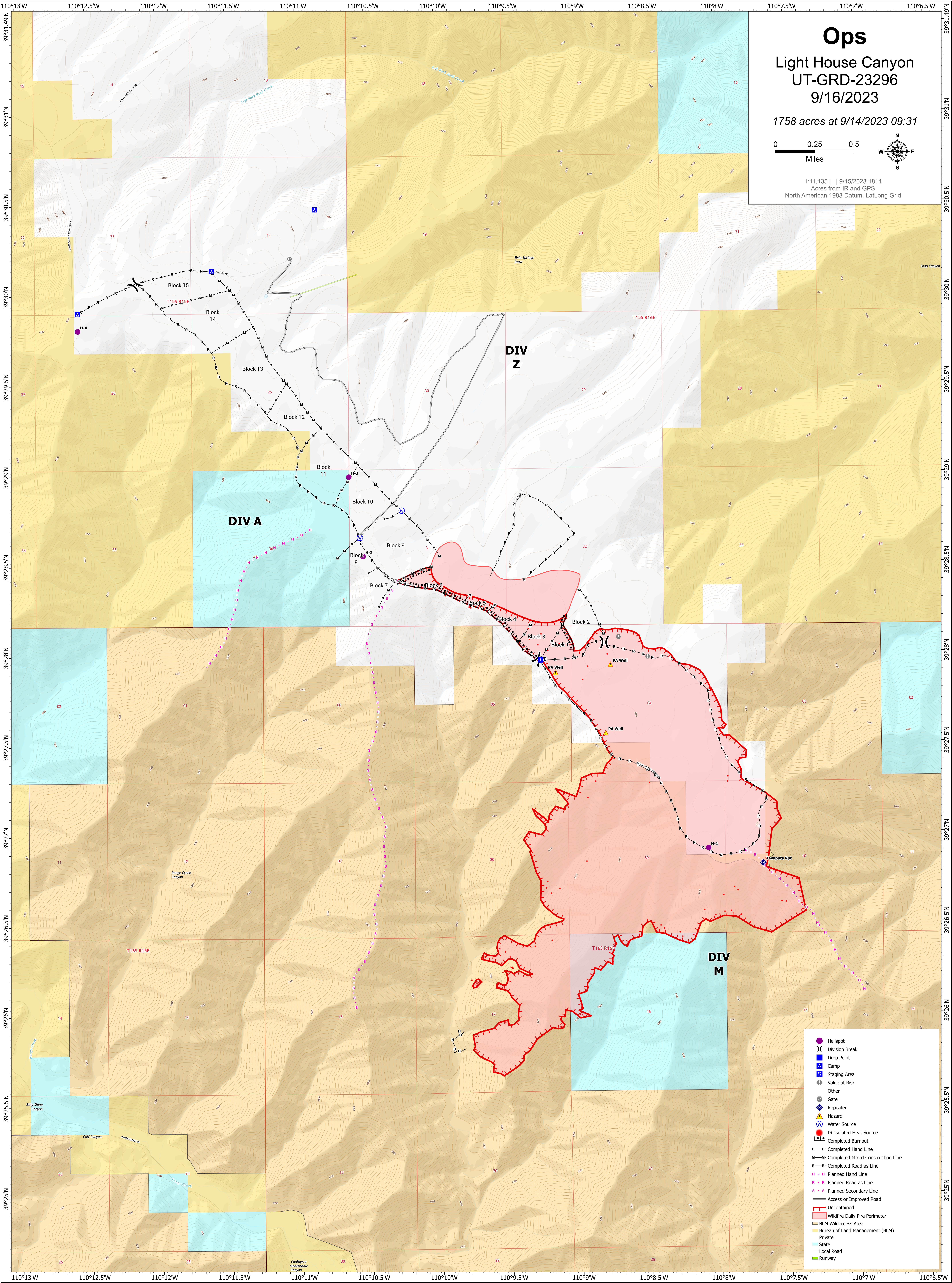
UT-GRD-23296

9/16/2023

1758 acres at 9/14/2023 09:31



1:11,135 | 9/15/2023 1814
Acres from IR and GPS
North American 1983 Datum, LatLong Grid



- Helispot
-) Division Break
- Drop Point
- ▲ Camp
- Staging Area
- Value at Risk
- Other
- Ⓜ Gate
- Ⓜ Repeater
- ▲ Hazard
- Ⓜ Water Source
- IR Isolated Heat Source
- Completed Burnout
- Completed Hand Line
- Completed Mixed Construction Line
- Completed Road as Line
- Planned Hand Line
- Planned Road as Line
- Planned Secondary Line
- Access or Improved Road
- Uncontained
- Wildfire Daily Fire Perimeter
- BLM Wilderness Area
- Bureau of Land Management (BLM)
- Private
- State
- Local Road
- Runway