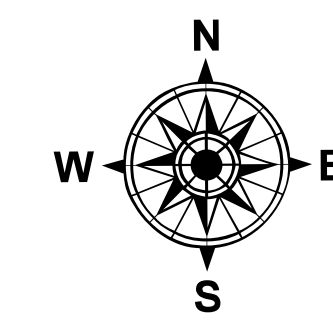


Transportation

Light House Canyon
UT-GRD-23296
9/16/2023

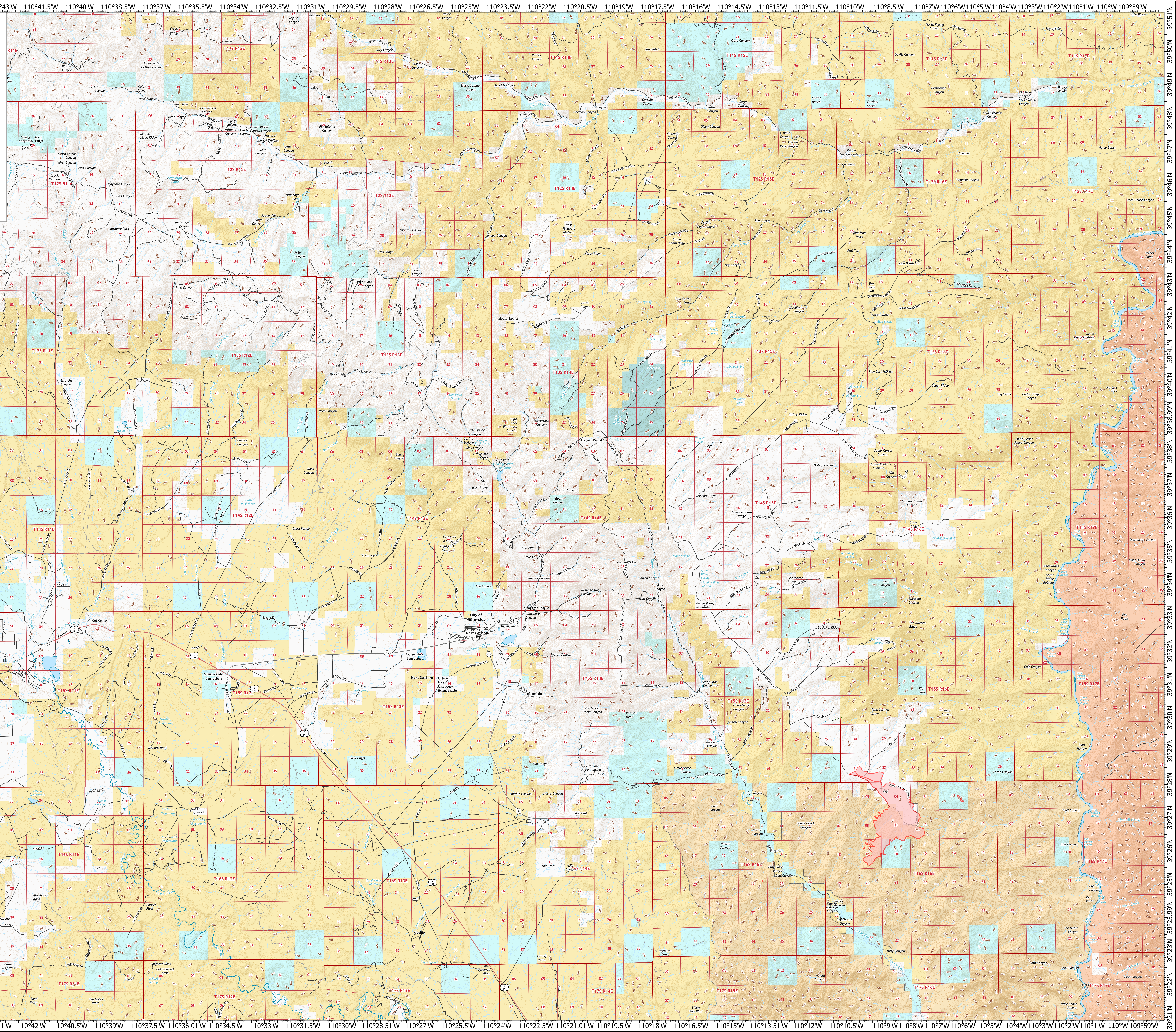
1758 acres at 9/14/2023 09:31

0.255 1 1.5 2 2.5 3 3.5
Miles



1:55,963 | 9/15/2023 1645
Acres from IR and GPS
North American 1983 Datum, Lat/Long Grid

- Wildfire Daily Fire Perimeter
- Secondary Hwy
- Local Connector
- Local Road
- Ramp
- ATD
- Trail
- Runway
- Township/Range
- Section
- Pipeline
- Perennial Stream
- Canal/Ditch
- Underground Pipeline
- Intermittent Stream
- Nonperennial Stream
- Nonperennial Dam
- Nonperennial Shore
- Perennial Lake
- Nonperennial Reservoir
- Perennial Lake
- Hillshade_045
- Hillshade_110
- Hillshade_160
- Hillshade_200
- Hillshade_254
- Index
- Depression Index
- Depression Intermediate
- BLM Wilderness Area
- Bureau of Land Management (BLM)
- Indian Reservation (IR)
- Private
- State Wildlife Reserve/Management Area



110°50.5'W 110°49'W 110°47.5'W 110°46'W 110°44.5'W 110°43'W 110°41.5'W 110°40'W 110°38.5'W 110°37'W 110°35.5'W 110°34'W 110°32.5'W 110°31'W 110°29.5'W 110°28'W 110°26.5'W 110°25'W 110°23.5'W 110°22'W 110°20.5'W 110°19'W 110°17.5'W 110°16'W 110°14.5'W 110°13'W 110°11.5'W 110°10'W 110°8.5'W 110°7'W 110°6'W 110°5'W 110°4'W 110°3'W 110°2'W 110°1'W 110°W 109°59'W

39°51'N 39°50'N 39°49'N 39°48'N 39°47'N 39°46'N 39°45'N 39°44'N 39°43'N 39°42'N 39°41'N 39°40'N 39°38.99'N 39°38'N 39°37'N 39°36'N 39°35'N 39°34'N 39°33'N 39°32'N 39°31'N 39°30'N 39°29'N 39°28'N 39°27'N 39°26'N 39°25'N 39°23.99'N 39°23'N 39°22'N 39°21'N 39°20'N 39°19'N 39°18'N 39°17'N 39°16'N 39°15'N 39°14'N 39°13'N 39°12'N 39°11'N 39°10'N 39°9'N 39°8'N 39°7'N 39°6'N 39°5'N 39°4'N 39°3'N 39°2'N 39°1'N 39°0'N 109°59'W