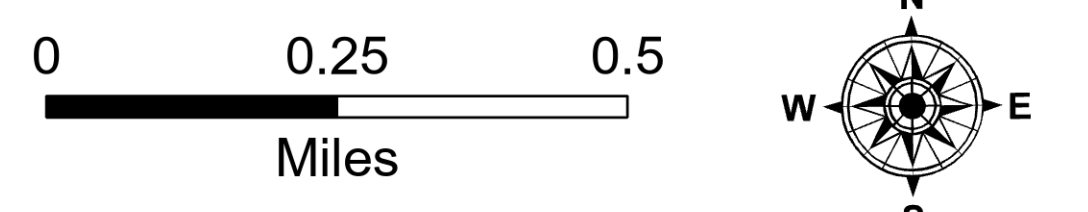


Ortho Ops

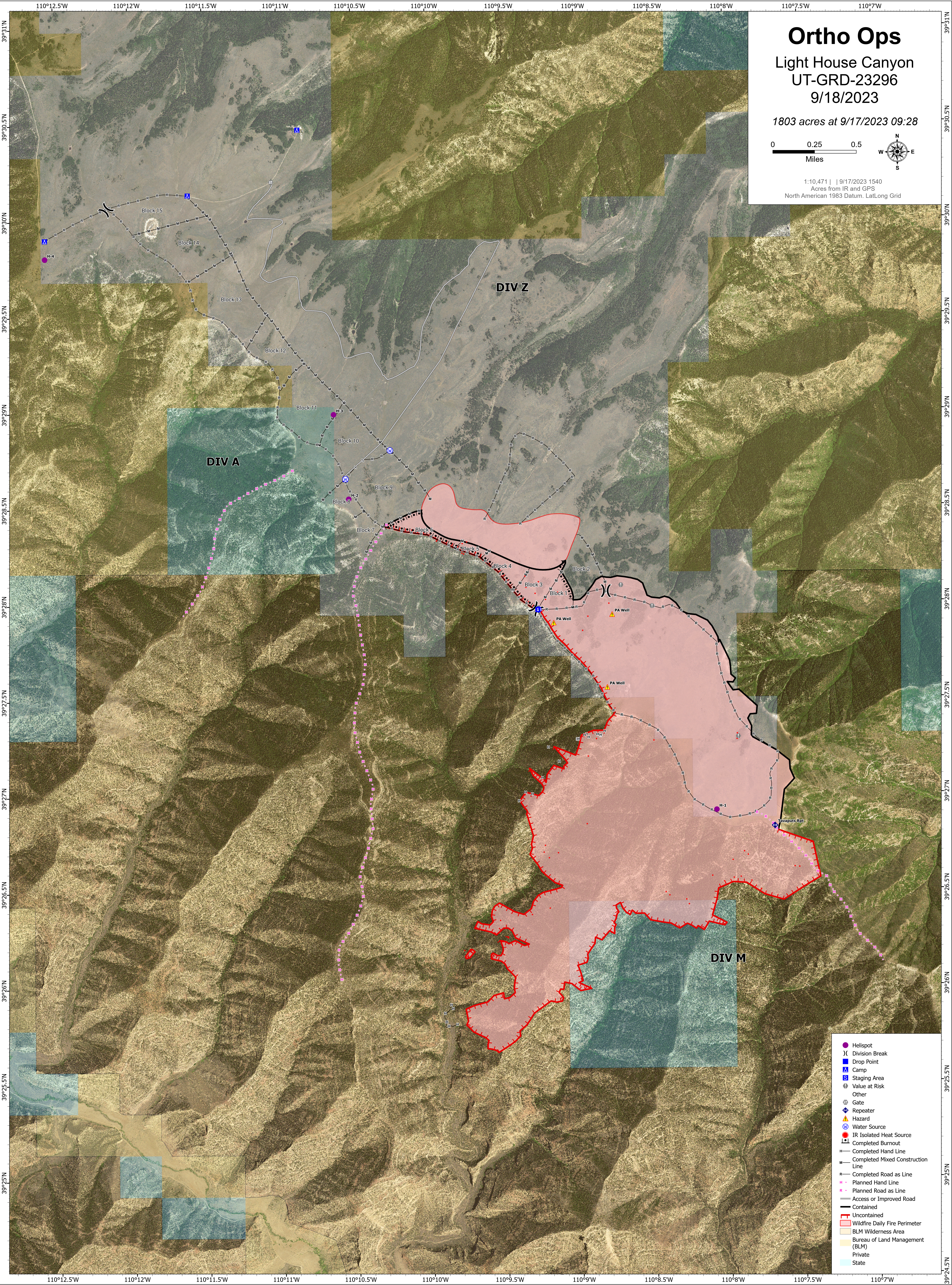
Light House Canyon
UT-GRD-23296

9/18/2023

1803 acres at 9/17/2023 09:28



1:10,471 | 9/17/2023 1540
Acres from IR and GPS
North American 1983 Datum, Lat/Long Grid



- Helispot
- ⌘ Division Break
- Camp
- Ⓜ Staging Area
- ⊕ Value at Risk
- Other
- ⊙ Gate
- Ⓜ Repeater
- ⚠ Hazard
- Ⓜ Water Source
- Ⓜ IR Isolated Heat Source
- Completed Burnout
- Completed Hand Line
- Completed Mixed Construction Line
- Completed Road as Line
- Planned Hand Line
- Planned Road as Line
- Access or Improved Road
- Contained
- Uncontained
- Wildfire Daily Fire Perimeter
- BLM Wilderness Area
- Bureau of Land Management (BLM)
- Private
- State