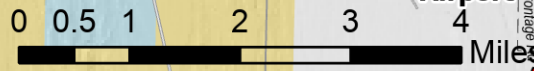


Airops

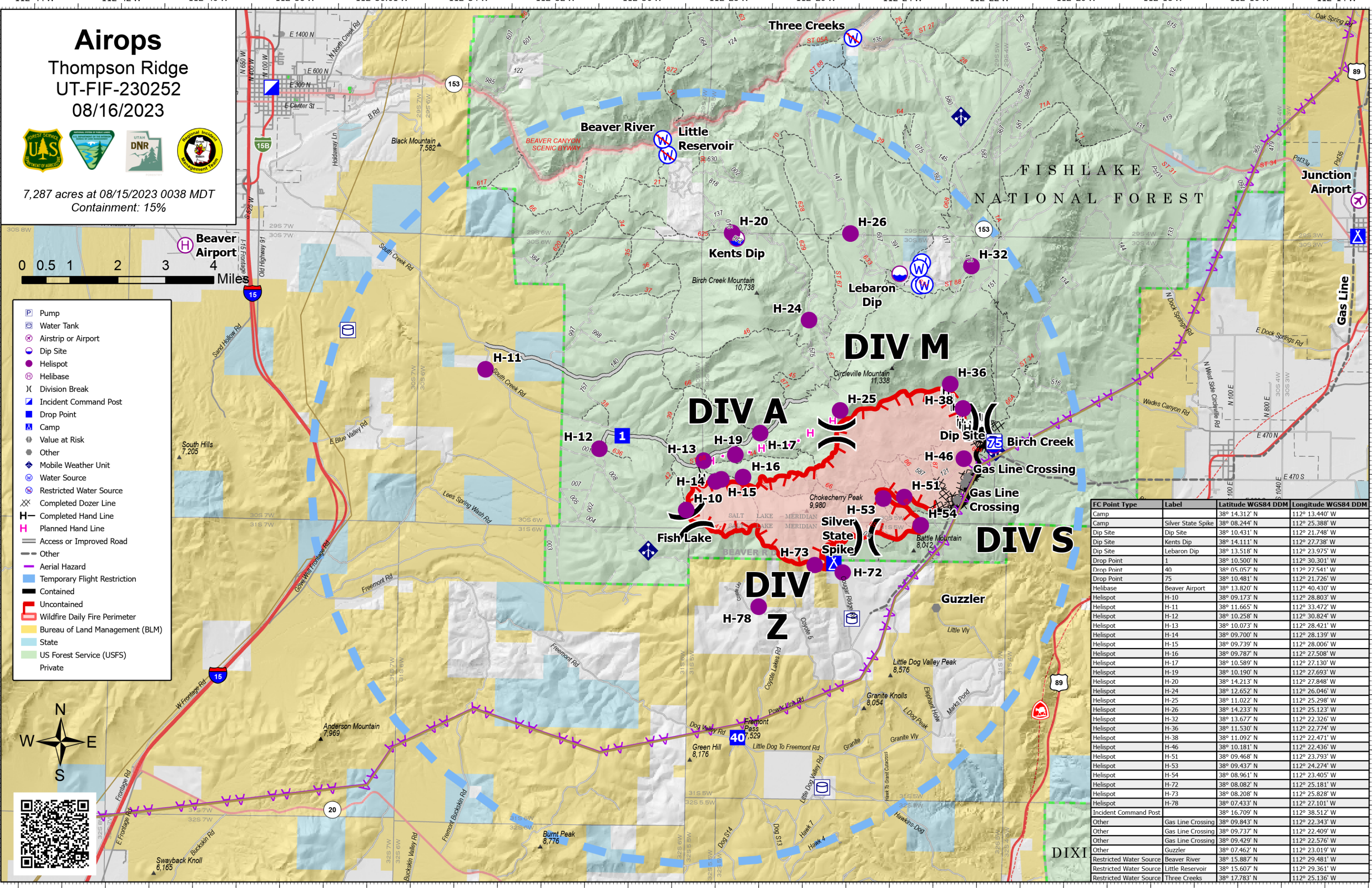
Thompson Ridge
UT-FIF-230252
08/16/2023



7,287 acres at 08/15/2023 0038 MDT
Containment: 15%



- Pump
- Water Tank
- Airstrip or Airport
- Dip Site
- Helispot
- Helibase
- Division Break
- Incident Command Post
- Drop Point
- Camp
- Value at Risk
- Other
- Mobile Weather Unit
- Water Source
- Restricted Water Source
- Completed Dozer Line
- Completed Hand Line
- Planned Hand Line
- Access or Improved Road
- Other
- Aerial Hazard
- Temporary Flight Restriction
- Contained
- Uncontained
- Wildfire Daily Fire Perimeter
- Bureau of Land Management (BLM)
- State
- US Forest Service (USFS)
- Private



FC Point Type	Label	Latitude WGS84 DDM	Longitude WGS84 DDM
Camp	Camp	38° 14.312' N	112° 13.440' W
Camp	Silver State Spike	38° 08.244' N	112° 25.388' W
Dip Site	Dip Site	38° 10.431' N	112° 21.748' W
Dip Site	Kents Dip	38° 14.111' N	112° 27.738' W
Dip Site	Lebaron Dip	38° 13.518' N	112° 23.975' W
Drop Point	1	38° 10.500' N	112° 30.301' W
Drop Point	40	38° 05.057' N	112° 27.541' W
Drop Point	75	38° 10.481' N	112° 21.726' W
Helibase	Beaver Airport	38° 13.820' N	112° 40.430' W
Helispot	H-10	38° 09.173' N	112° 28.803' W
Helispot	H-11	38° 11.665' N	112° 33.472' W
Helispot	H-12	38° 10.258' N	112° 30.824' W
Helispot	H-13	38° 10.073' N	112° 28.421' W
Helispot	H-14	38° 09.700' N	112° 28.139' W
Helispot	H-15	38° 09.739' N	112° 28.006' W
Helispot	H-16	38° 09.787' N	112° 27.508' W
Helispot	H-17	38° 10.589' N	112° 27.130' W
Helispot	H-19	38° 10.190' N	112° 27.693' W
Helispot	H-20	38° 14.213' N	112° 27.848' W
Helispot	H-24	38° 12.652' N	112° 26.046' W
Helispot	H-25	38° 11.022' N	112° 25.298' W
Helispot	H-26	38° 14.233' N	112° 25.123' W
Helispot	H-32	38° 13.677' N	112° 22.326' W
Helispot	H-36	38° 11.530' N	112° 22.774' W
Helispot	H-38	38° 11.092' N	112° 22.471' W
Helispot	H-46	38° 10.181' N	112° 22.436' W
Helispot	H-51	38° 09.468' N	112° 23.793' W
Helispot	H-53	38° 09.437' N	112° 24.274' W
Helispot	H-54	38° 08.961' N	112° 23.405' W
Helispot	H-72	38° 08.082' N	112° 25.181' W
Helispot	H-73	38° 08.208' N	112° 25.828' W
Helispot	H-78	38° 07.433' N	112° 27.101' W
Incident Command Post		38° 16.709' N	112° 38.512' W
Other	Gas Line Crossing	38° 09.843' N	112° 22.343' W
Other	Gas Line Crossing	38° 09.737' N	112° 22.409' W
Other	Gas Line Crossing	38° 09.429' N	112° 22.576' W
Other	Guzzler	38° 07.462' N	112° 23.019' W
Restricted Water Source	Beaver River	38° 15.887' N	112° 29.481' W
Restricted Water Source	Little Reservoir	38° 15.607' N	112° 29.361' W
Restricted Water Source	Three Creeks	38° 17.783' N	112° 25.136' W