

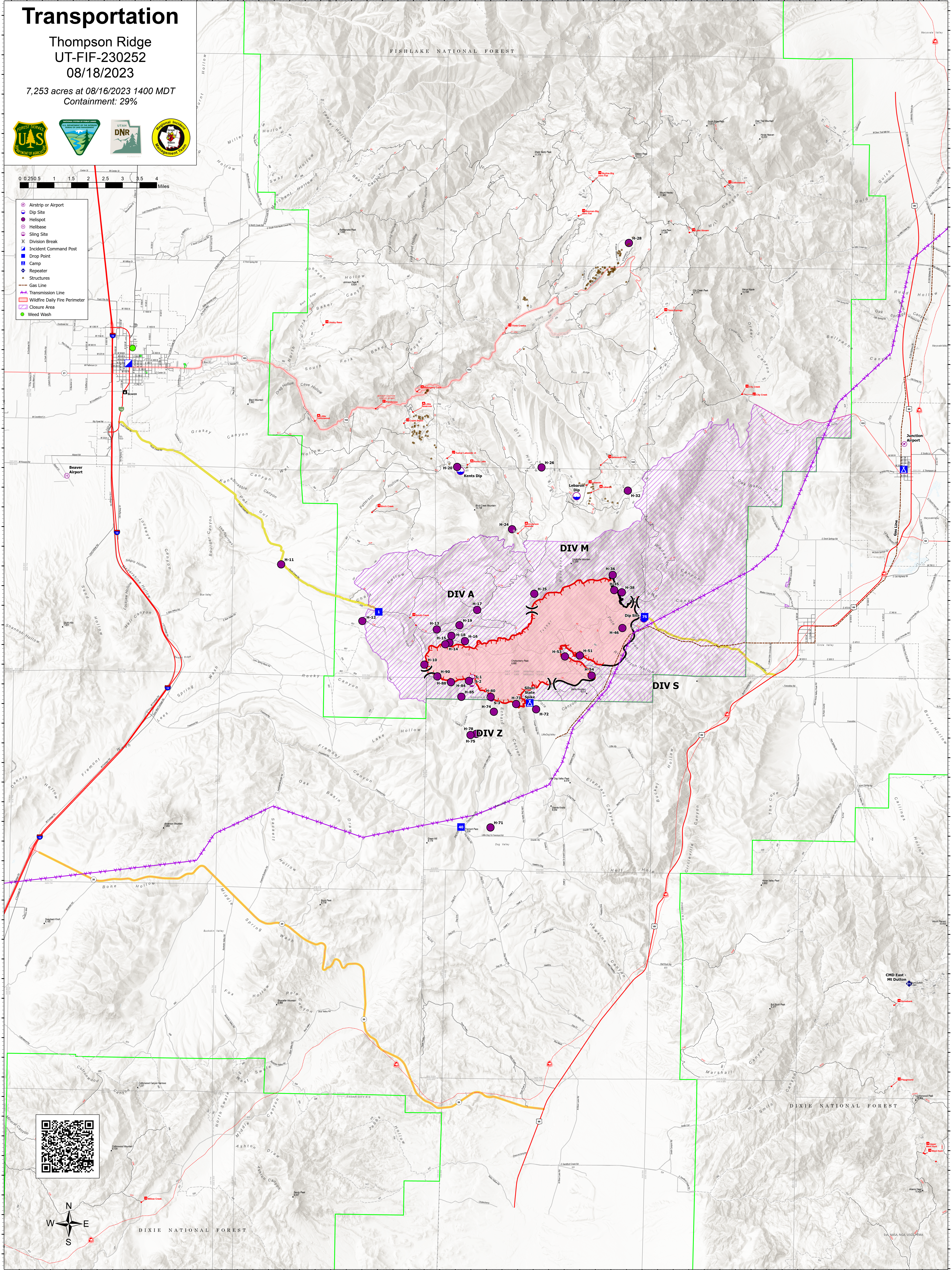
Transportation

Thompson Ridge
UT-FIF-230252
08/18/2023

7,253 acres at 08/16/2023 1400 MDT
Containment: 29%



- Airstrip or Airport
- Dip Site
- Helispot
- Helibase
- Sling Site
- Division Break
- Incident Command Post
- Drop Point
- Camp
- Repeater
- Structures
- Gas Line
- Transmission Line
- Wildfire Daily Fire Perimeter
- Closure Area
- Weed Wash



112°41.5'W 112°40.5'W 112°39.5'W 112°38.5'W 112°37.5'W 112°36.5'W 112°35.5'W 112°34.5'W 112°33.5'W 112°32.5'W 112°31.5'W 112°30.5'W 112°29.5'W 112°28.5'W 112°27.5'W 112°26.5'W 112°25.5'W 112°24.5'W 112°23.5'W 112°22.5'W 112°21.5'W 112°20.5'W 112°19.5'W 112°18.5'W 112°17.5'W 112°16.5'W 112°15.5'W 112°14.5'W 112°13.5'W 112°12.5'W

38°25'N 38°24'N 38°23'N 38°22'N 38°21'N 38°20'N 38°19'N 38°18'N 38°17'N 38°16'N 38°15'N 38°14'N 38°13'N 38°12'N 38°11'N 38°10'N 38°9'N 38°8'N 38°7'N 38°6'N 38°5'N 38°4'N 38°3'N 38°2'N 38°1'N 37°59'N 37°58'N 37°57'N 37°56'N 37°55'N 37°54'N 37°53'N