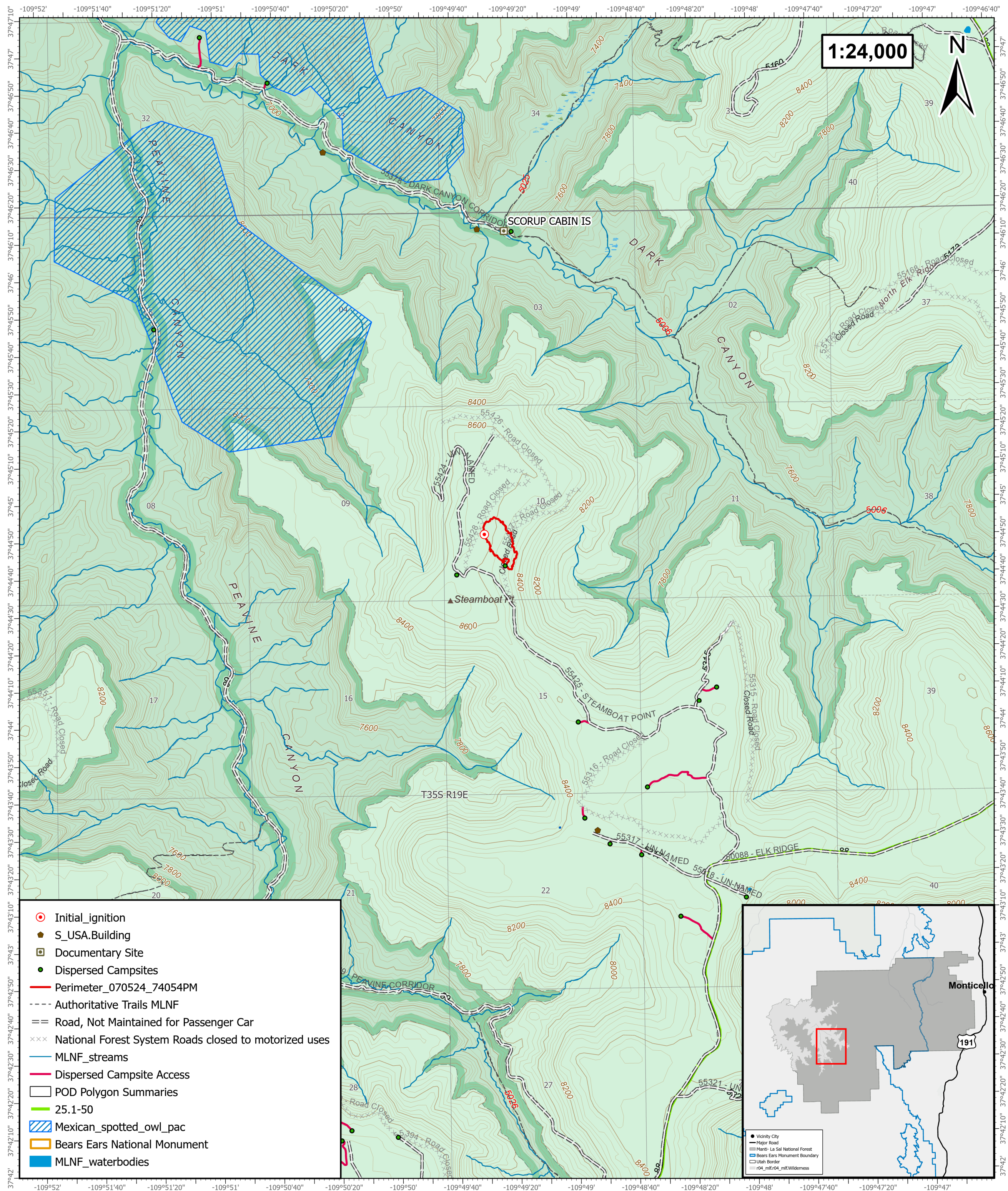
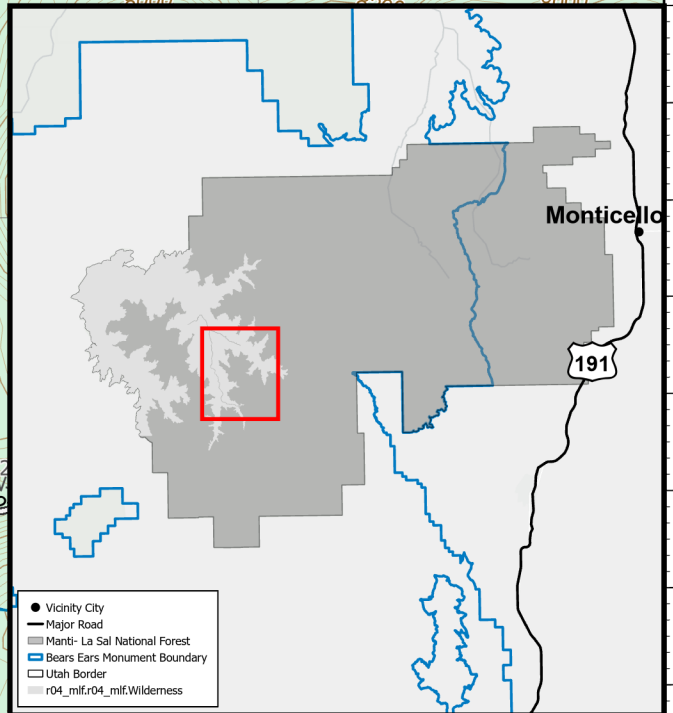


# Babylon Fire Perimeter\_07\_05\_2024

Monticello Ranger District, Manti-La Sal National Forest



- Initial\_ignition
- S\_USA.Building
- Documentary Site
- Dispersed Campsites
- Perimeter\_070524\_74054PM
- - - Authoritative Trails MLNF
- = = = Road, Not Maintained for Passenger Car
- x x x National Forest System Roads closed to motorized uses
- MLNF\_streams
- Dispersed Campsite Access
- POD Polygon Summaries
- 25.1-50
- Mexican\_spotted\_owl\_pac
- Bears Ears National Monument
- MLNF\_waterbodies



This product is reproduced from information prepared by the USDA, Forest Service or from other suppliers. The Forest Service cannot assure the reliability or suitability of this information for a particular purpose. The data and product accuracy may vary due to compilation from various sources, including modeling and interpretation, and may not meet National Map Accuracy Standards. This information may be updated, corrected or otherwise modified without notification. For more information contact: Manti-La Sal National Forest Supervisors Office at 435-637-2817. The USDA is an equal opportunity provider and employer.

Date: 7/6/2024  
 Document Path: T:\FS\NFS\MantiLaSal\Program\5100Fire\GIS\Fires\2024\_SteamboatPoint\MapProducts\SteamBoatPoint\_2024.aprx

