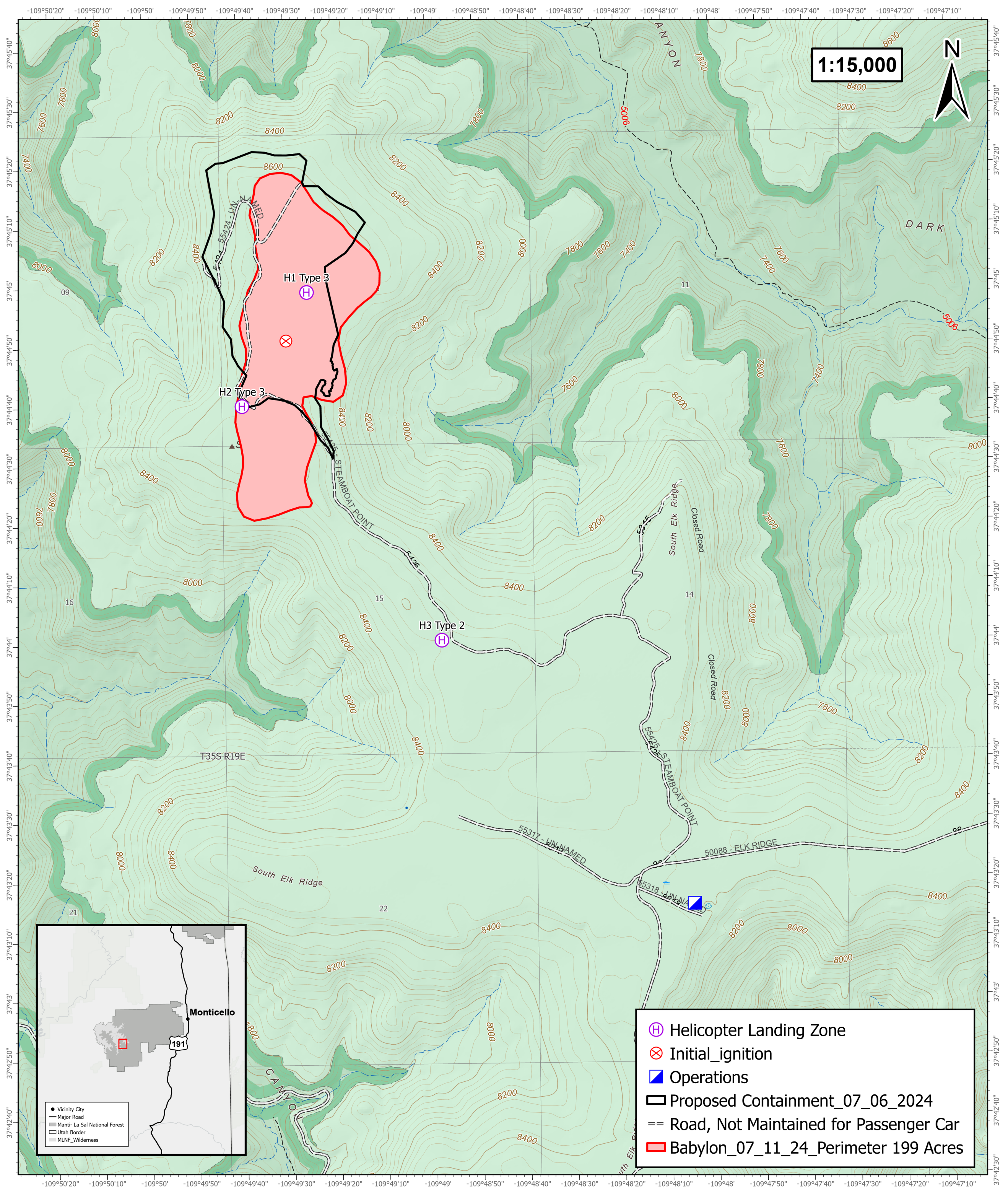


Operations Map

Babylon Fire UT-MLF-004198

07/11/24

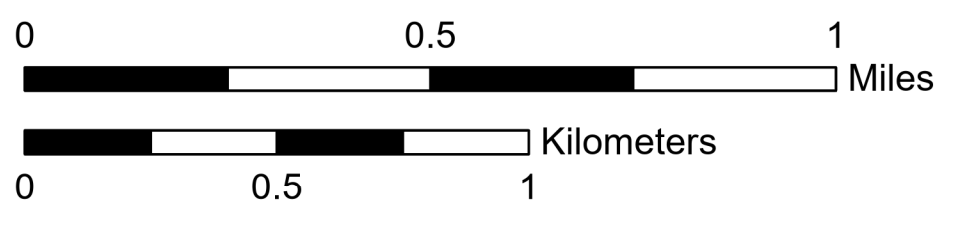
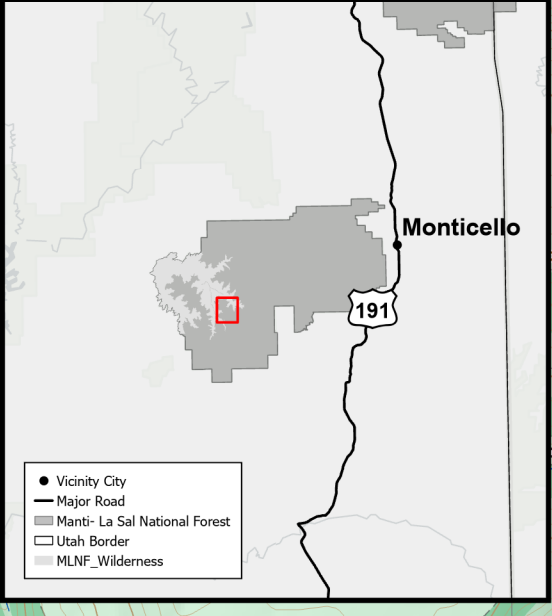
Monticello Ranger District, Manti-La Sal National Forest



1:15,000



- Helicopter Landing Zone
- Initial_ignition
- Operations
- Proposed Containment_07_06_2024
- Road, Not Maintained for Passenger Car
- Babylon_07_11_24_Perimeter 199 Acres



This product is reproduced from information prepared by the USDA, Forest Service or from other suppliers. The Forest Service cannot assure the reliability or suitability of this information for a particular purpose. The data and product accuracy may vary due to compilation from various sources, including modeling and interpretation, and may not meet National Map Accuracy Standards. This information may be updated, corrected or otherwise modified without notification. For more information contact: Manti-La Sal National Forest Supervisors Office at 435-637-2817. The USDA is an equal opportunity provider and employer.

Date: 7/10/2024
 Document Path: T:\FS\NFS\MantiLaSal\Program\5100Fire\GIS\Fires\2024_SteamboatPoint\MapProducts\SteamBoatPoint_2024.aprx