

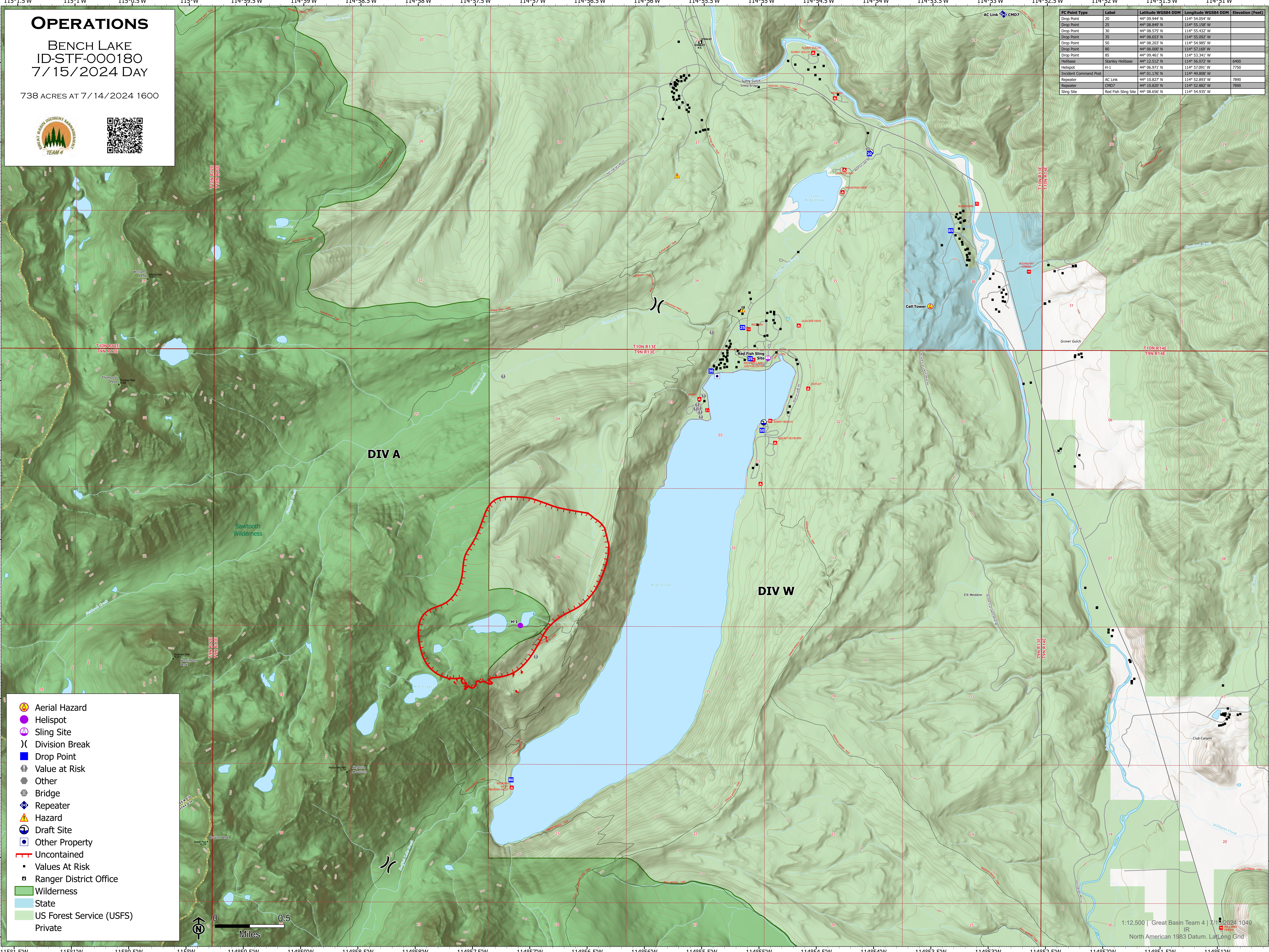
# OPERATIONS

BENCH LAKE  
ID-STF-000180  
7/15/2024 DAY

738 ACRES AT 7/14/2024 1600



FC Point Type	Label	Latitude WGS84 DDM	Longitude WGS84 DDM	Elevation (Feet)
Drop Point	20	44° 09.944' N	114° 54.054' W	
Drop Point	25	44° 08.849' N	114° 55.158' W	
Drop Point	30	44° 08.575' N	114° 55.432' W	
Drop Point	35	44° 08.553' N	114° 55.602' W	
Drop Point	50	44° 08.203' N	114° 54.985' W	
Drop Point	80	44° 06.007' N	114° 57.169' W	
Drop Point	85	44° 09.461' N	114° 53.341' W	
Helibase	Stanley Helibase	44° 12.512' N	114° 56.072' W	6400
Helispot	H-1	44° 06.971' N	114° 57.091' W	7750
Truck/Command Post	AC Link	44° 01.176' N	114° 50.808' W	
Repeater	AC Link	44° 10.827' N	114° 52.893' W	7890
Repeater	CMD7	44° 10.820' N	114° 52.882' W	7890
Slingsite	Red Fish Slingsite	44° 08.656' N	114° 54.935' W	



- Aerial Hazard
- Helispot
- Slingsite
- Division Break
- Drop Point
- Value at Risk
- Other
- Bridge
- Repeater
- Hazard
- Draft Site
- Other Property
- Uncontained
- Values At Risk
- Ranger District Office
- Wilderness
- State
- US Forest Service (USFS)
- Private

