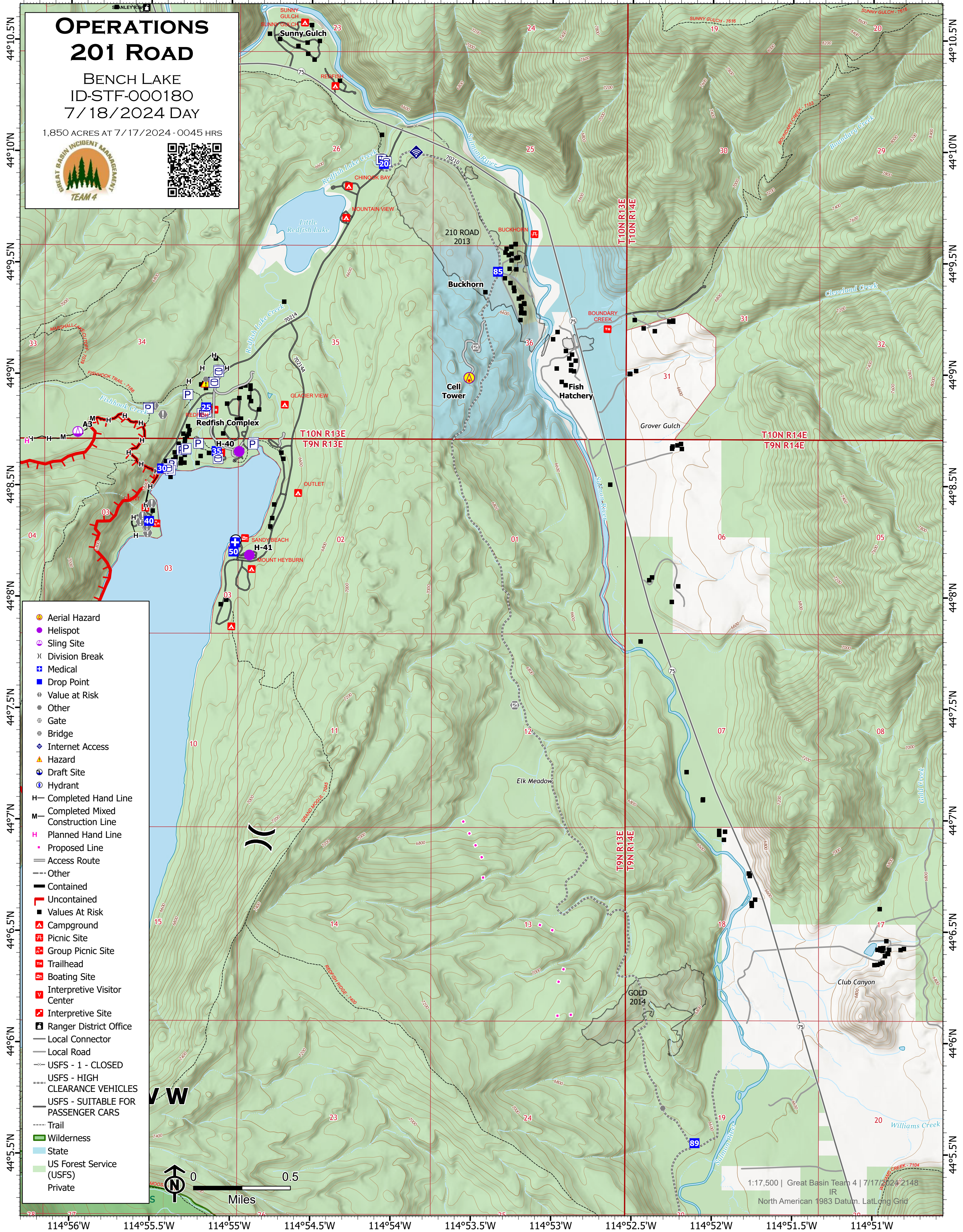


114°56'W 114°55.5'W 114°55'W 114°54.5'W 114°54'W 114°53.5'W 114°53'W 114°52.5'W 114°52'W 114°51.5'W 114°51'W

OPERATIONS 201 ROAD

BENCH LAKE
ID-STF-000180
7/18/2024 DAY

1,850 ACRES AT 7/17/2024 - 0045 HRS



- Aerial Hazard
- Helispot
- Sling Site
- Division Break
- Medical
- Drop Point
- Value at Risk
- Other
- Gate
- Bridge
- Internet Access
- Hazard
- Draft Site
- Hydrant
- Completed Hand Line
- Completed Mixed Construction Line
- Planned Hand Line
- Proposed Line
- Access Route
- Other
- Contained
- Uncontained
- Values At Risk
- Campground
- Picnic Site
- Group Picnic Site
- Trailhead
- Boating Site
- Interpretive Visitor Center
- Interpretive Site
- Ranger District Office
- Local Connector
- Local Road
- USFS - 1 - CLOSED
- USFS - HIGH CLEARANCE VEHICLES
- USFS - SUITABLE FOR PASSENGER CARS
- Trail
- Wilderness
- State
- US Forest Service (USFS)
- Private



1:17,500 | Great Basin Team 4 | 7/17/2024 2148 IR
North American 1983 Datum, Lat/Long Grid

114°56'W 114°55.5'W 114°55'W 114°54.5'W 114°54'W 114°53.5'W 114°53'W 114°52.5'W 114°52'W 114°51.5'W 114°51'W