

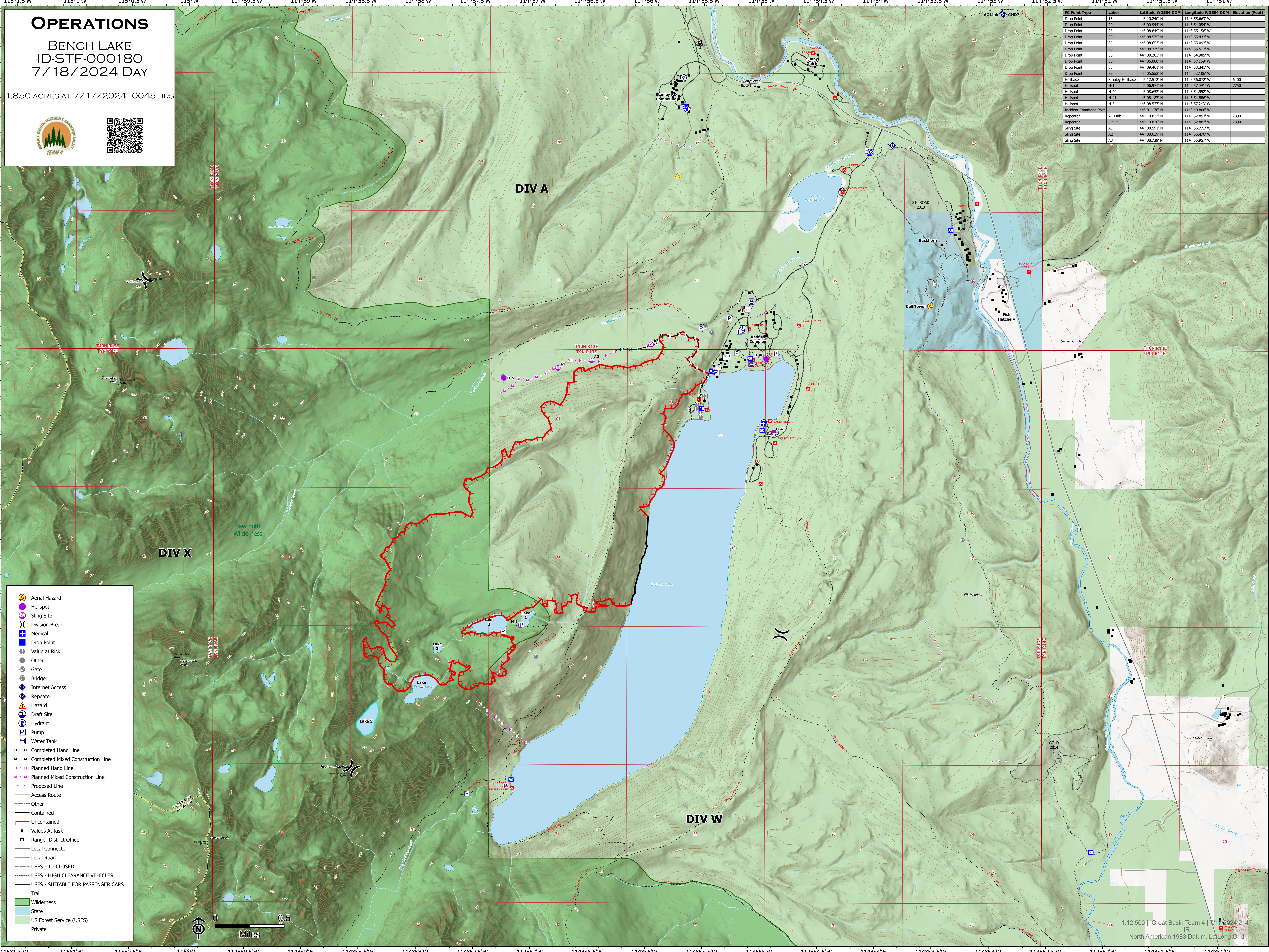
# OPERATIONS

BENCH LAKE  
ID-STF-000180  
7/18/2024 DAY

1,850 ACRES AT 7/17/2024 - 0045 HRS



FC Point Type	Label	Latitude WGS84 DDM	Longitude WGS84 DDM	Elevation (Feet)
Drop Point	15	44° 10.240' N	114° 55.663' W	
Drop Point	20	44° 09.944' N	114° 55.054' W	
Drop Point	25	44° 08.849' N	114° 55.158' W	
Drop Point	30	44° 08.575' N	114° 55.432' W	
Drop Point	35	44° 08.653' N	114° 55.092' W	
Drop Point	40	44° 08.339' N	114° 55.512' W	
Drop Point	50	44° 08.203' N	114° 54.985' W	
Drop Point	80	44° 06.000' N	114° 57.169' W	
Drop Point	85	44° 09.461' N	114° 53.341' W	
Drop Point	89	44° 05.552' N	114° 53.198' W	
Helibase	Stanley Helibase	44° 12.512' N	114° 56.072' W	6400
Helispot	H-1	44° 06.971' N	114° 57.091' W	7750
Helispot	H-40	44° 08.652' N	114° 54.952' W	
Helispot	H-41	44° 08.187' N	114° 54.886' W	
Helispot	H-5	44° 08.527' N	114° 57.243' W	
Incident Command Post		44° 01.176' N	114° 49.886' W	
Repeater	AC Link	44° 10.827' N	114° 52.893' W	7890
Repeater	CM07	44° 10.820' N	114° 52.882' W	7890
Sling Site	A1	44° 08.591' N	114° 56.771' W	
Sling Site	A2	44° 08.639' N	114° 56.476' W	
Sling Site	A3	44° 08.739' N	114° 55.957' W	



- Aerial Hazard
- Helispot
- Sling Site
- Division Break
- Medical
- Drop Point
- Value at Risk
- Other
- Gate
- Bridge
- Internet Access
- Repeater
- Hazard
- Draft Site
- Hydrant
- Pump
- Water Tank
- Completed Hand Line
- Completed Mixed Construction Line
- Planned Hand Line
- Planned Mixed Construction Line
- Proposed Line
- Access Route
- Other
- Contained
- Values At Risk
- Ranger District Office
- Local Connector
- Local Road
- USFS - 1 - CLOSED
- USFS - HIGH CLEARANCE VEHICLES
- USFS - SUITABLE FOR PASSENGER CARS
- Trail
- Wilderness
- State
- US Forest Service (USFS)
- Private

