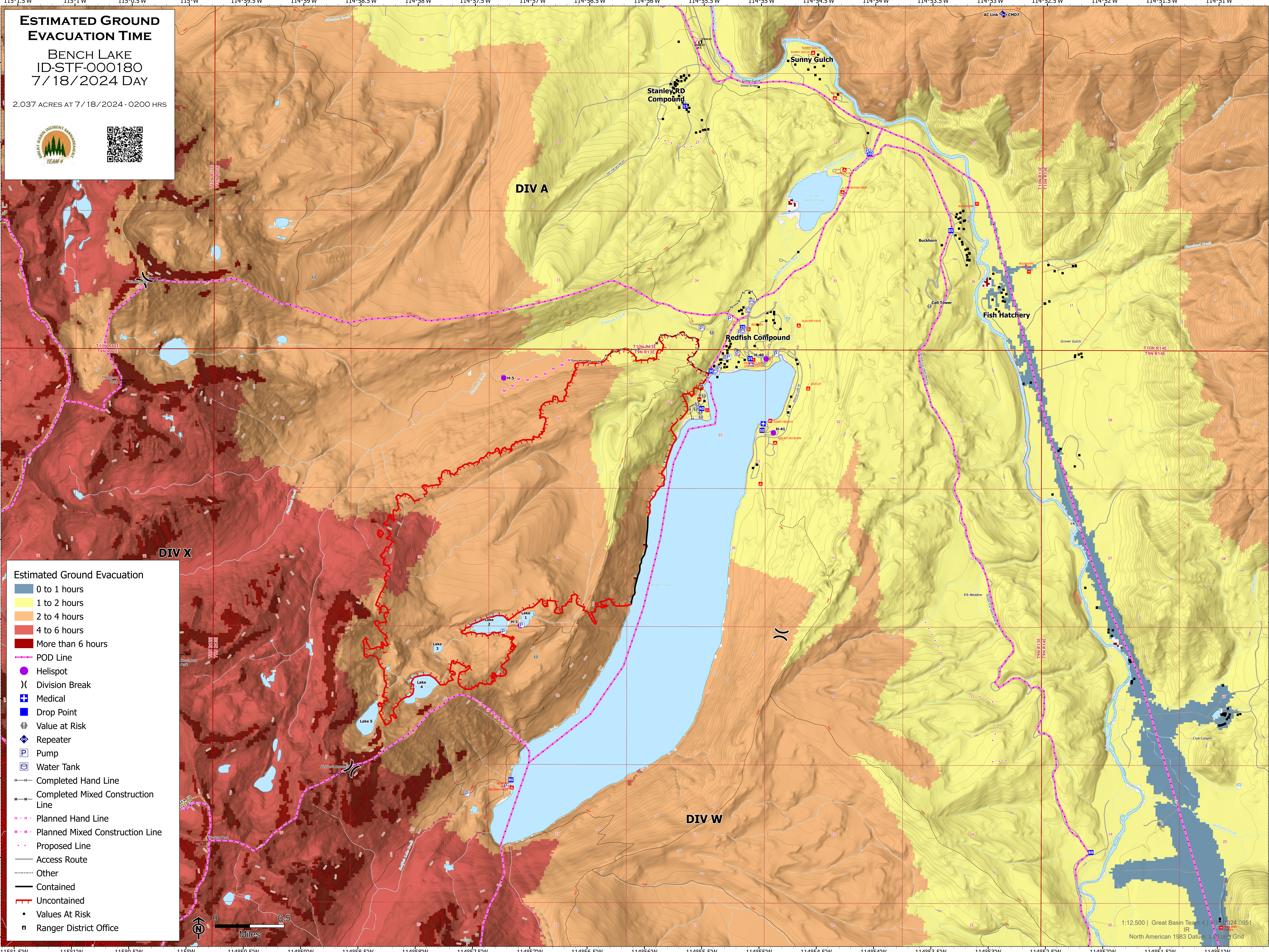


ESTIMATED GROUND EVACUATION TIME

BENCH LAKE
ID-STF-000180
7/18/2024 DAY

2,037 ACRES AT 7/18/2024 - 0200 HRS



Estimated Ground Evacuation

- 0 to 1 hours
- 1 to 2 hours
- 2 to 4 hours
- 4 to 6 hours
- More than 6 hours
- POD Line
- Helispot
- Division Break
- Medical
- Drop Point
- Value at Risk
- Repeater
- Pump
- Water Tank
- Completed Hand Line
- Completed Mixed Construction Line
- Planned Hand Line
- Planned Mixed Construction Line
- Proposed Line
- Access Route
- Other
- Contained
- Uncontained
- Values At Risk
- Ranger District Office

