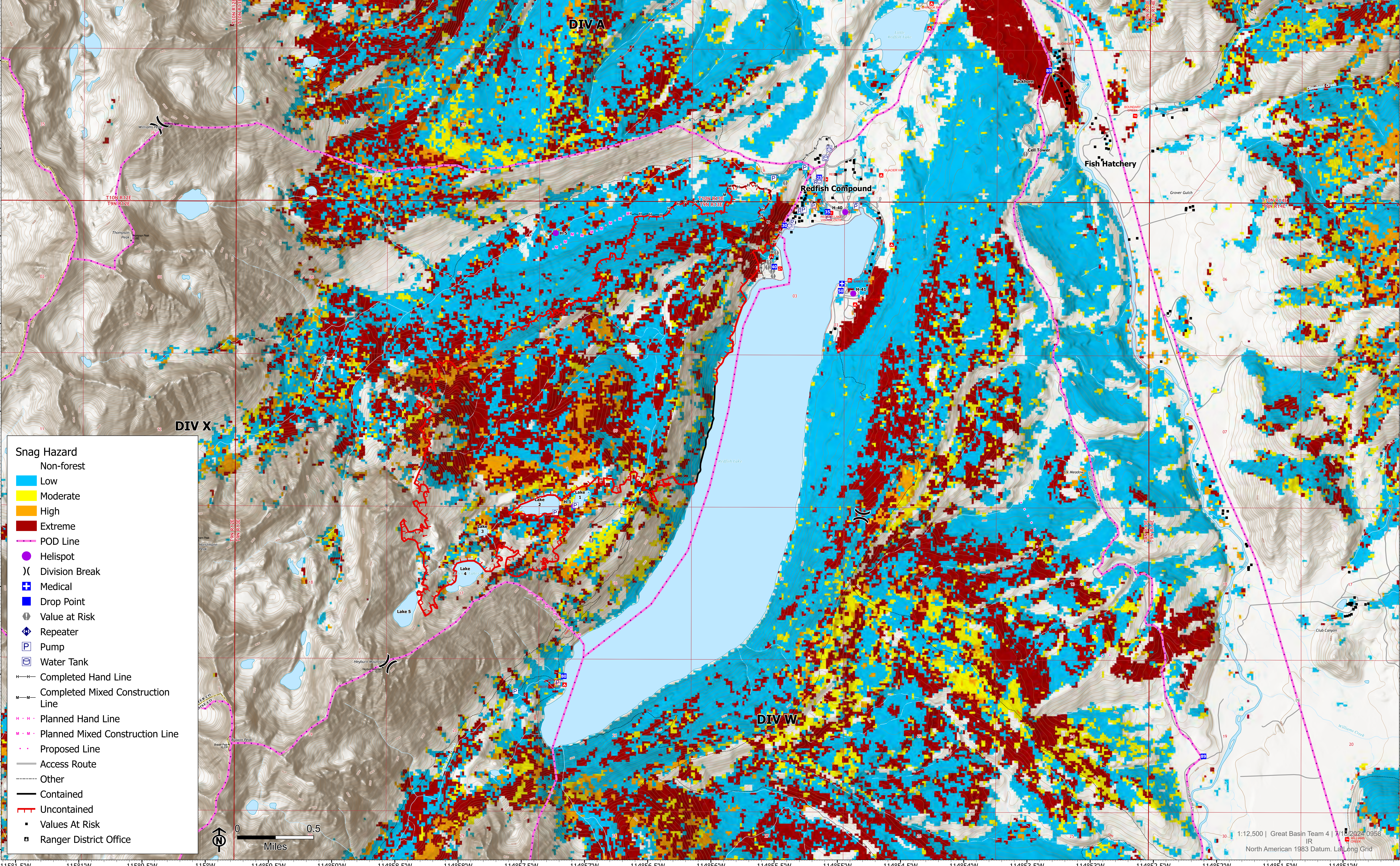


115°1.5'W 115°1'W 115°0.5'W 115°W 114°59.5'W 114°59'W 114°58.5'W 114°58'W 114°57.5'W 114°57'W 114°56.5'W 114°56'W 114°55.5'W 114°55'W 114°54.5'W 114°54'W 114°53.5'W 114°53'W 114°52.5'W 114°52'W 114°51.5'W 114°51'W

SNAG HAZARD
 BENCH LAKE
 ID-STF-000180
 7/18/2024 DAY
 2,037 ACRES AT 7/18/2024 - 0200 HRS





Snag Hazard

- Non-forest
- Low
- Moderate
- High
- Extreme

Management Lines

- POD Line
- Hand Line
- Mixed Construction Line
- Proposed Line

Other Features

- Access Route
- Other
- Contained
- Uncontained
- Values At Risk
- Ranger District Office

Infrastructure

- Helispot
- Division Break
- Medical
- Drop Point
- Value at Risk
- Repeater
- Pump
- Water Tank

0 0.5 Miles