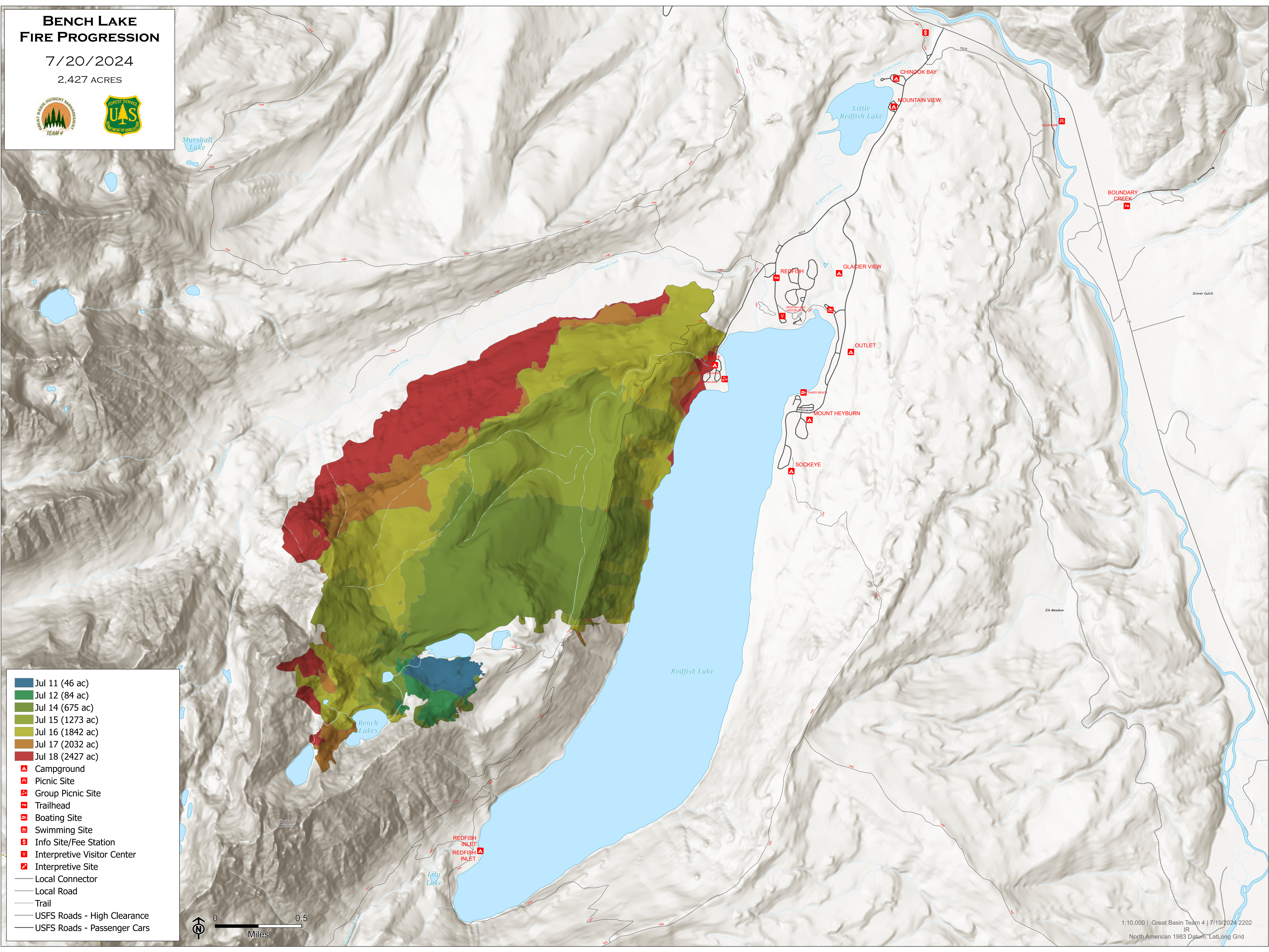


# BENCH LAKE FIRE PROGRESSION

7/20/2024

2,427 ACRES



- Jul 11 (46 ac)
- Jul 12 (84 ac)
- Jul 14 (675 ac)
- Jul 15 (1273 ac)
- Jul 16 (1842 ac)
- Jul 17 (2032 ac)
- Jul 18 (2427 ac)
- Campground
- Picnic Site
- Group Picnic Site
- Trailhead
- Boating Site
- Swimming Site
- Info Site/Fee Station
- Interpretive Visitor Center
- Interpretive Site
- Local Connector
- Local Road
- Trail
- USFS Roads - High Clearance
- USFS Roads - Passenger Cars

