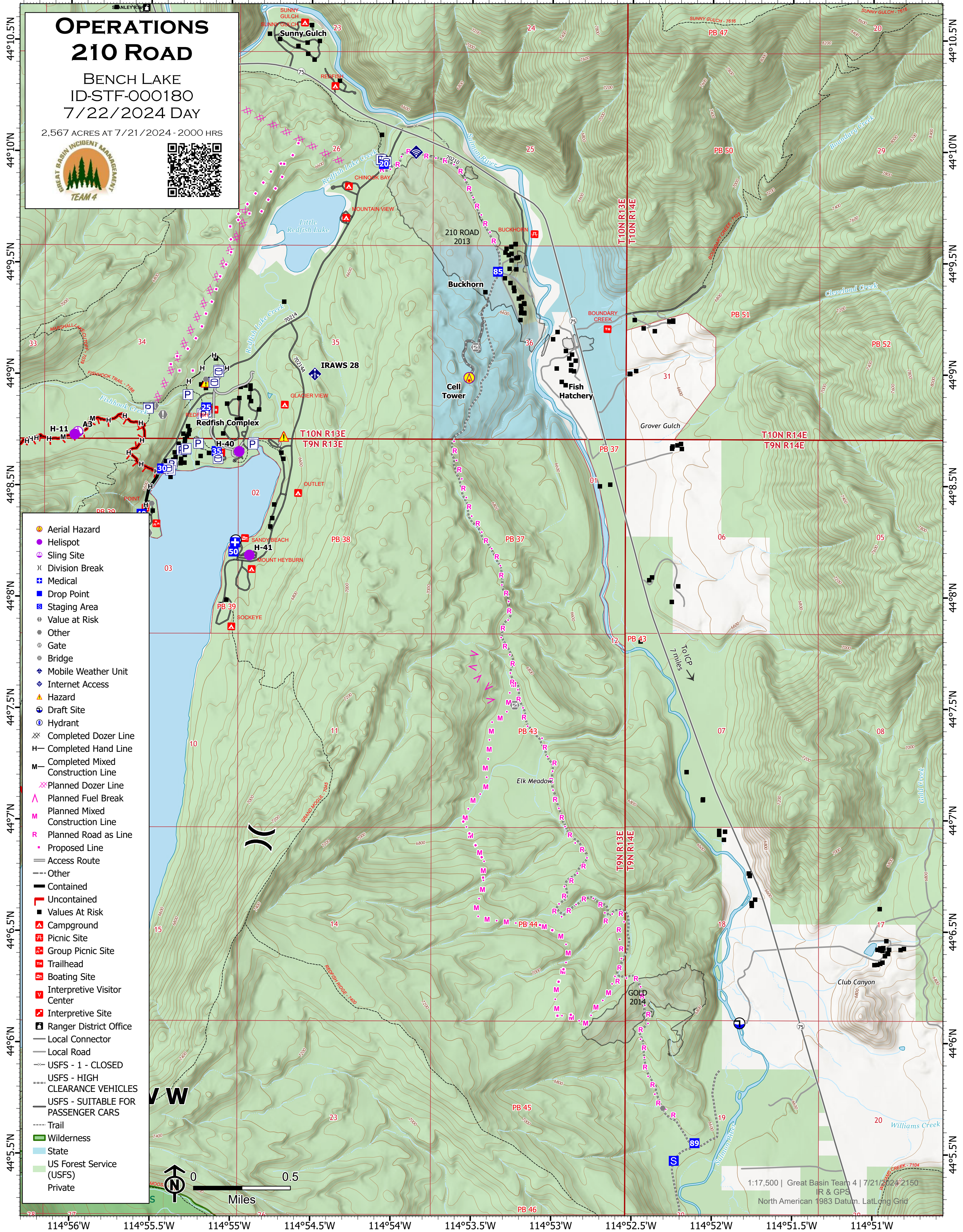


114°56'W 114°55.5'W 114°55'W 114°54.5'W 114°54'W 114°53.5'W 114°53'W 114°52.5'W 114°52'W 114°51.5'W 114°51'W

OPERATIONS 210 ROAD

BENCH LAKE
ID-STF-000180
7/22/2024 DAY

2,567 ACRES AT 7/21/2024 - 2000 HRS



- Aerial Hazard
- Helispot
- Sling Site
- Division Break
- Medical
- Drop Point
- Staging Area
- Value at Risk
- Other
- Gate
- Bridge
- Mobile Weather Unit
- Internet Access
- Hazard
- Draft Site
- Hydrant
- Completed Dozer Line
- Completed Hand Line
- Completed Mixed Construction Line
- Planned Dozer Line
- Planned Fuel Break
- Planned Mixed Construction Line
- Planned Road as Line
- Proposed Line
- Access Route
- Other
- Contained
- Uncontained
- Values At Risk
- Campground
- Picnic Site
- Group Picnic Site
- Trailhead
- Boating Site
- Interpretive Visitor Center
- Interpretive Site
- Ranger District Office
- Local Connector
- Local Road
- USFS - 1 - CLOSED
- USFS - HIGH CLEARANCE VEHICLES
- USFS - SUITABLE FOR PASSENGER CARS
- Trail
- Wilderness
- State
- US Forest Service (USFS)
- Private



1:17,500 | Great Basin Team 4 | 7/21/2024 2150
IR & GPS
North American 1983 Datum, Lat/Long Grid