

115°1'W 115°W 114°59'W 114°58'W 114°57'W 114°56'W 114°55'W 114°54'W 114°53'W 114°52'W

# OPERATIONS

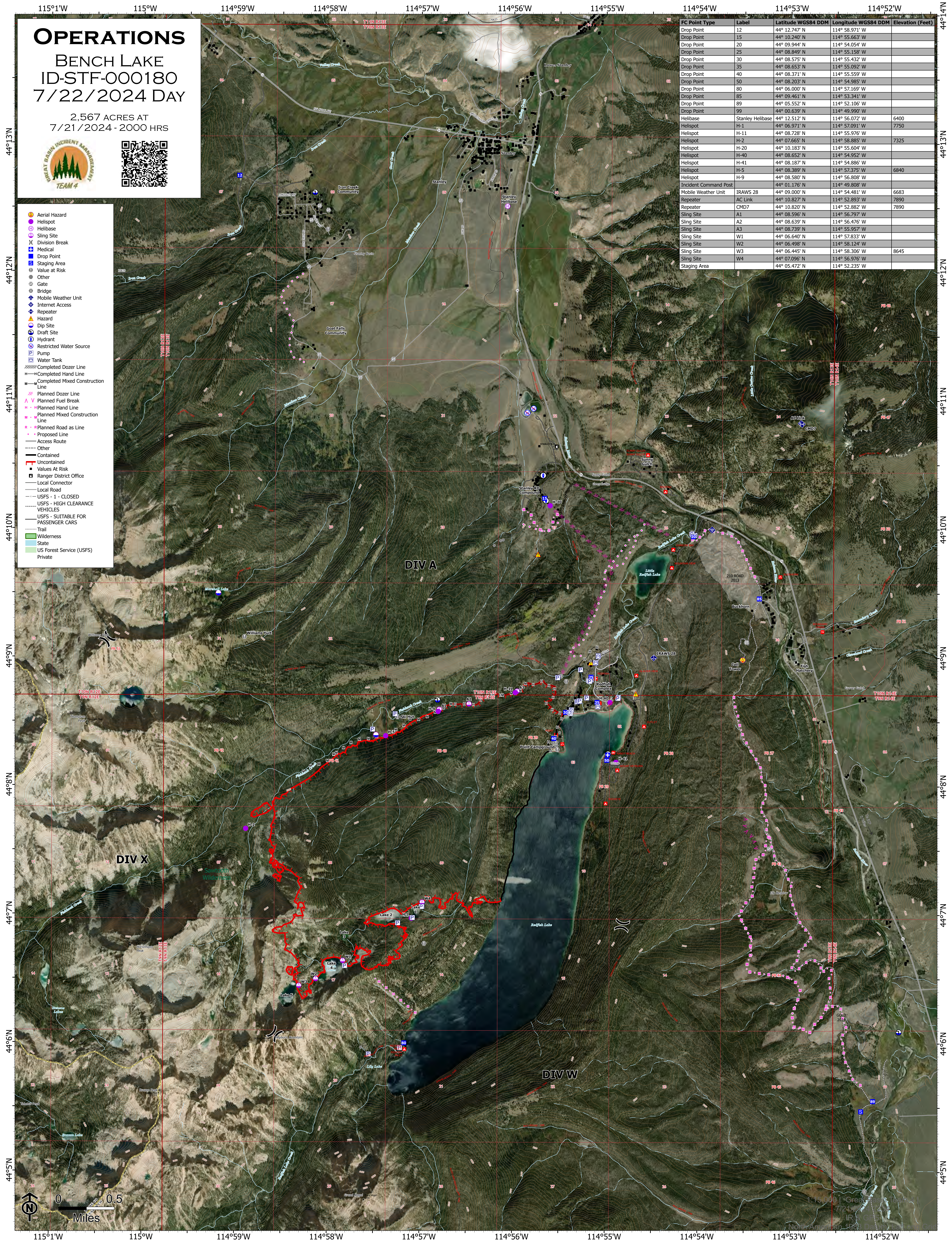
## BENCH LAKE ID-STF-000180 7/22/2024 DAY

2,567 ACRES AT  
7/21/2024 - 2000 HRS



- Aerial Hazard
- Helispot
- Helibase
- Sling Site
- Division Break
- Medical
- Drop Point
- Staging Area
- Value at Risk
- Other
- Gate
- Bridge
- Mobile Weather Unit
- Internet Access
- Repeater
- Hazard
- Dip Site
- Draft Site
- Hydrant
- Restricted Water Source
- Pump
- Water Tank
- Completed Dozer Line
- Completed Hand Line
- Completed Mixed Construction Line
- Planned Dozer Line
- Planned Fuel Break
- Planned Hand Line
- Planned Mixed Construction Line
- Planned Road as Line
- Proposed Line
- Access Route
- Other
- Contained
- Uncontained
- Values At Risk
- Ranger District Office
- Local Connector
- Local Road
- USFS - 1 - CLOSED
- USFS - HIGH CLEARANCE
- VEHICLES
- USFS - SUITABLE FOR PASSENGER CARS
- Trail
- Wilderness
- State
- US Forest Service (USFS)
- Private

FC Point Type	Label	Latitude WGS84 DDM	Longitude WGS84 DDM	Elevation (Feet)
Drop Point	12	44° 12.747' N	114° 58.971' W	
Drop Point	15	44° 10.240' N	114° 55.663' W	
Drop Point	20	44° 09.944' N	114° 54.054' W	
Drop Point	25	44° 08.849' N	114° 55.158' W	
Drop Point	30	44° 08.575' N	114° 55.432' W	
Drop Point	35	44° 08.653' N	114° 55.092' W	
Drop Point	40	44° 08.371' N	114° 55.559' W	
Drop Point	50	44° 08.203' N	114° 54.985' W	
Drop Point	80	44° 06.000' N	114° 57.169' W	
Drop Point	85	44° 09.461' N	114° 53.341' W	
Drop Point	89	44° 05.552' N	114° 52.106' W	
Drop Point	99	44° 00.639' N	114° 49.990' W	
Helibase	Stanley Helibase	44° 12.512' N	114° 56.072' W	6400
Helispot	H-1	44° 06.971' N	114° 57.091' W	7750
Helispot	H-11	44° 08.728' N	114° 55.976' W	
Helispot	H-2	44° 07.665' N	114° 58.885' W	7325
Helispot	H-20	44° 10.183' N	114° 55.604' W	
Helispot	H-40	44° 08.652' N	114° 54.952' W	
Helispot	H-41	44° 08.187' N	114° 54.886' W	
Helispot	H-5	44° 08.389' N	114° 57.375' W	6840
Helispot	H-9	44° 08.580' N	114° 56.808' W	
Incident Command Post		44° 01.176' N	114° 49.808' W	
Mobile Weather Unit	IRAWS 28	44° 09.000' N	114° 54.481' W	6683
Repeater	AC Link	44° 10.827' N	114° 52.893' W	7890
Repeater	CMD7	44° 10.820' N	114° 52.882' W	7890
Sling Site	A1	44° 08.596' N	114° 56.797' W	
Sling Site	A2	44° 08.639' N	114° 56.476' W	
Sling Site	A3	44° 08.739' N	114° 55.957' W	
Sling Site	W1	44° 06.640' N	114° 57.833' W	
Sling Site	W2	44° 06.498' N	114° 58.124' W	
Sling Site	W3	44° 06.445' N	114° 58.306' W	8645
Sling Site	W4	44° 07.096' N	114° 56.976' W	
Staging Area		44° 05.472' N	114° 52.235' W	



115°1'W 115°W 114°59'W 114°58'W 114°57'W 114°56'W 114°55'W 114°54'W 114°53'W 114°52'W

44°13'N 44°12'N 44°11'N 44°10'N 44°9'N 44°8'N 44°7'N 44°6'N 44°5'N

44°14'N 44°13'N 44°12'N 44°11'N 44°10'N 44°9'N 44°8'N 44°7'N 44°6'N 44°5'N