

# Bench Lake

2,595 Ac

Percent Contained

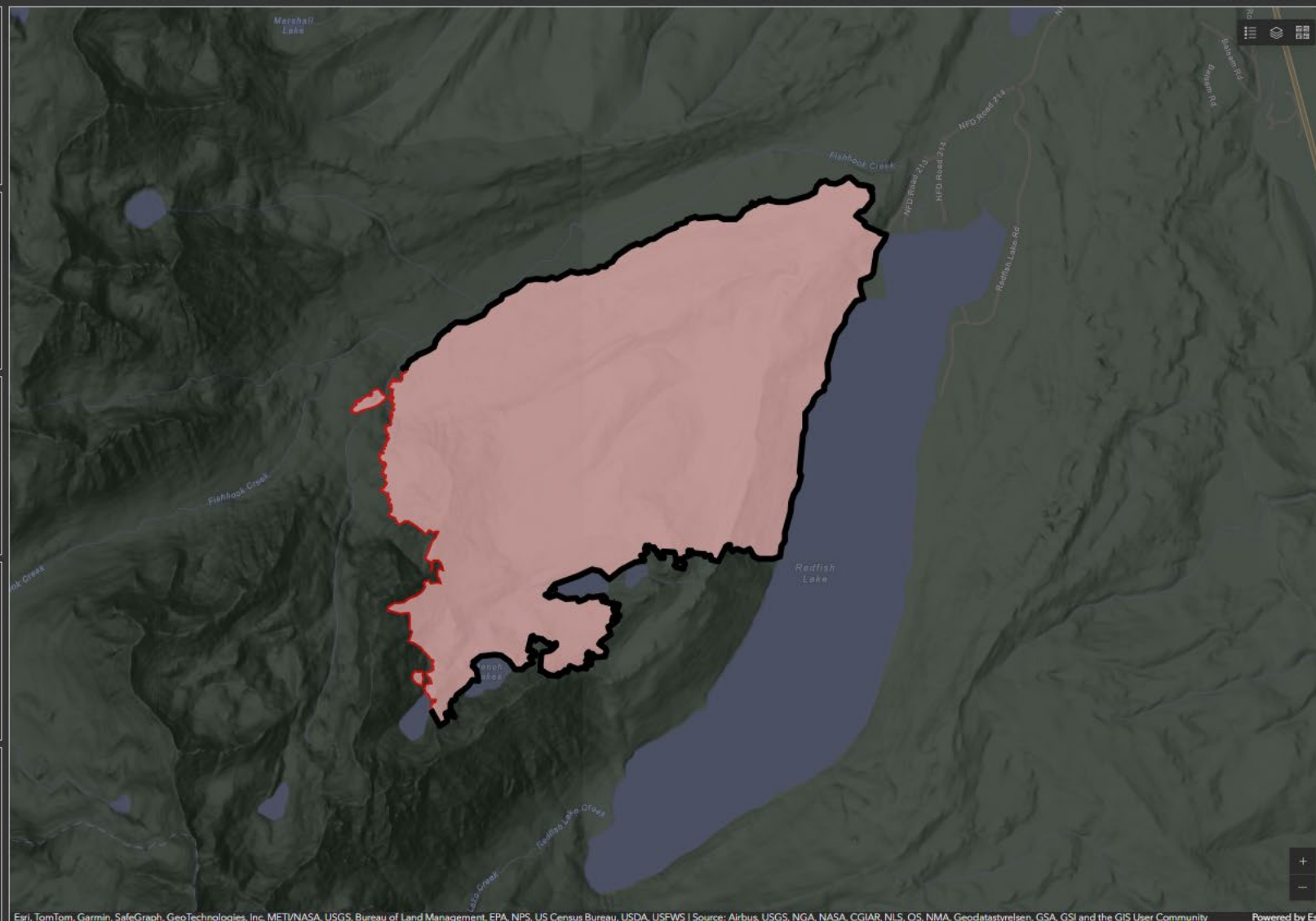
72%

Estimated Cost to Date

\$9M

Total Incident Personnel

275



# Bench Fire Incident General Weather Outlook

For Planning Purposes Only, see the IAP for the Official Forecast

Forecast made 26 July/1500 - Incident Meteorologist (IMET) Spencer Tangen

Day	Sat	Sun	Mon	Tue	Wed	Thu
	27-Jul	28-Jul	29-Jul	30-Jul	31-Jul	1-Aug
Clouds @ 1500 (%)	80	30	20	50	10	10
Max Temp (@7000')	77	76	80	73	80	85
Precip Chance (%)	40	10	5	15	0	0
LAL	2	1	1	2	1	1
20 ft Wind (mph)	10g20	15g25	15g25	15g25	10g20	5g15
Wind Direction*	SW	SW	SW	W	W	W
Min Humidity (%)	25	25	20	30	25	20
Haines Index	4	4	5	3	4	5
<b>KEY:</b>	<b>Moderate Burning Conditions</b>		<b>Take Caution - Critical Burning Conditions</b>		<b>Extreme Burning Conditions</b>	
Clouds	>24%		15	to	24	<15%
Max Temp	<80F		80	to	89	>89F
Precip Chance	>49%		15	to	49	<15%
LAL	1		2	to	3	> 3
20 Ft Wind Gusts	<16mph		16	to	29	>29mph
*Wind Direction	Criticality of wind direction highly dependent on burn operations and/or structures threatened					
Min Humidity	>25%		15	to	25	<15%
Haines Index	< 4		5		6	

Five or more EXTREME blocks in a day equals the potential for a Critical Weather Day

This forecast matrix was developed for the Bench Fire Wildfire and uses criteria specific for this incident. Every incident will respond to conditions differently and adjustments to the formulas and or categories used may be needed.