

# INCIDENT ACTION PLAN BLACK EAGLE & RED ROCK FIRES

Monday



Credit to Beth Young PIO T2T3

## OPERATIONAL PERIOD

9/9/2024 0600  
to  
9/9/2024 2000



Red Rock



Black Eagle

Fire Weather Discussion:

A weak short-wave will bring showers with isolated thunderstorms across the central mountains. We may see a brief period of scattered coverage across portions of Zone 475 this afternoon. These storms will be mostly "dry" with wind gusts over 35 mph. It will be dry and breezy Monday and Tuesday. A period of cooler weather with showers/storms is expected Wednesday through Friday.

. MONDAY...

\* Sky/weather.....Sunny. Haze in the morning. Areas of smoke through the day.  
\* Max Temperature...74-81 valleys and 65-71 ridges.  
\* 24 hr trend.....Little change.  
\* Min Humidity.....16-23 percent.  
\* 24 hr trend.....Little change.  
\* 20ft winds.....  
\* Valleys/lwr slopes...West 8 to 13 mph.  
\* Ridges/upr slopes...West 8 to 13 mph. Gusts up to 15 mph increasing to 25 mph in the afternoon.  
\* LAL.....1.  
\* Haines Index.....4.  
\* Mixing Height.....11750-12750 ft AGL.  
\* Transport Winds...West 10 to 15 mph.

. MONDAY NIGHT...

\* Sky/weather.....Partly cloudy. Areas of smoke.  
\* Min Temperature...47-54.  
\* 24 hr trend.....Little change.  
\* Max Humidity.....37-45 percent.  
\* 24 hr trend...4 percent down.  
\* 20ft winds.....  
\* Valleys/lwr slopes...West 7 to 12 mph shifting to the south 4 to 6 mph after midnight.  
\* Ridges/upr slopes...Southwest 8 to 13 mph with gusts to around 20 mph.  
\* Chc Wetting Rain...0 percent.  
\* LAL.....1.  
\* Haines Index.....4.  
\* Mixing Height...0-1000 ft AGL.  
\* Transport Winds...West around 10 mph in the evening becoming light.

. TUESDAY...

\* Sky/weather.....Mostly cloudy then becoming partly cloudy.  
\* Max Temperature...73-80 valleys and 64-70 ridges.  
\* 24 hr trend.....Little change.  
\* Min Humidity.....14-20 percent.  
\* 24 hr trend...3 percent down.  
\* 20ft winds.....  
\* Valleys/lwr slopes...Southwest 9 to 14 mph.  
\* Ridges/upr slopes...Southwest 10 to 15 mph. Gusts up to 15 mph increasing to 30 mph in the afternoon.  
\* Chc Wetting Rain...0 percent.  
\* LAL.....1.  
\* Haines Index.....5.  
\* Mixing Height...14750-15750 ft AGL.  
\* Transport Winds...South around 10 mph increasing to southwest around 25 mph in the afternoon.



## GB Type 3 IMT 2- 2024 Contact Roster

Position	Name	Cell	Email
Incident Commander	Brian Kitchen	702-960-5344	brian_kitchen@nps.gov
Safety	Todd Demasters	(208)-830-6283	todd.demasters@usda.gov
Operations	Jay Berneck	(951)-805-9362	jayberneck@gmail.com
Operations	Cy McCullough	(208)-559-5867	cy.mccullough@yahoo.com
Medical Unit Leader	Jonathan Sinclair	719-331-7558	jonathan_sinclair@firenet.gov
Medical Unit Leader(t)	Kaitlin Mckelvy	208-519-2668	kaitlin.jmh@gmail.com
Plans	Robert Washburn	775-962-1552	robert_washburn@firenet.gov
Logistics	Shannon Sanders	775-397-1285	shannon3214@yahoo.com
Information	Carlie Swa	208-510-7856	cswa@blm.gov
Information(T)	Beth Young	702-808-7401	eyoung@blm.gov
Finance	Sierra Brewer	775-870-6268	sierra_brewer@firenet.gov
Finance	Janice Minarik	928-607-6546	janice_minarik@firenet.gov

# ASSIGNMENT LIST (ICS 204 WF)

CONTROLLED UNCLASSIFIED  
INFORMATION/BASIC

<b>1. Incident Name:</b>	<b>Black Eagle &amp; Red Rock Fires</b>		
<b>2. Operational Period:</b>	Date From: 09/09/24	Date To: 09/09/24	Time From: 0600
<b>3. Branch</b>	<b>PANTHER GROUP</b>		

<b>4. Operations Personnel:</b>			
Operations Section Chief:	Jay Bertek		
Branch Director:	Gary Cramble		
Division/Group Supervisor:	Gary Cramble		
Night Ops:			
Branch Safety:			
Air Attack:			

**5. Resources Assigned:** \*\*Resources Below in Bold are 12 Hour\*\*

Resource Identifier	ALS	LWD	Leader	Personnel	Request #	Hours	Reporting Location
ENG6 - IDIFD 3694		9/15	ANDREW WARE	4	E-4	0600-2000	
ENG6 - SMITHFIELD FD E640		9/17	DUSTIN HOOTON	0	E-2	0600-2000	
ENG5 - FLAT ROCK CONTRACTING		9/20	CODY BLAIR	3	E-13	0600-2000	
ENG5 - BIG SKY FD - E1261		9/20	CHRIS MOHR	3	E-15	0600-2000	
ENG6 - JNG #20 Y2		9/17	KIRK PICKENS	2	E-7	0600-2000	
ENG3 - MISSOULA CITY E142		9/20	JEFF KROLL	3	E-16	0600-2000	
ENG6 - WEBER FD E601		9/18	KYLE PARK	3	E-11	0600-2000	
ENG6 - AKTNF 654		9/14	KELLY JACOBS	4	E-8	0600-2000	
ENG3 - OUTBACK FIREFIGHTING		9/21	MICHAEL ANDRA	3	E-20	0600-2000	
WTT2 - GREAT BASIN FIRE		9/20	TYLER PICKETT	2	E-9	0600-2000	
WTS3 - RYAN BENTLEY LLC		9/19	RYAN BENTLEY	1	E-8	0600-2000	
WTS3 - BLUFFDALE FD WT93		9/19	TERRY NIALSON	1	E-7	0600-2000	

**6. Work Assignments:**  
 Evaluate and assess point protection strageties for Panther Creek corridor, and Moyer Work Station to minimize potential impact to structures should the fire threaten the area  
 Monitor fire progression and be prepared for point protection ops as necessary from current indirect lines to aid in the fire containment and minimize impact to values at risk within Panther Creek and Moyer Creek drainages  
 Structures and values at risk are identified, assessed and mapped  
 Continue to prep the Panther Creek road for firing operations, and scouting the FS 112 rd for potential firing opportunities

**7. Special Instructions:**  
 Fish Screens on all Drafting sites  
 Preauthorization from READS on all water crossings, heavy equipment usage, and burning.  
 Obtain Lat/Long for all pumps and tanks within the Division

**8. Communications**

Name	Ch	Function	Rx Freq	Rx Tone	Tx Freq	Tx Tone	Mode	Notes
NIFC C7	7	COMMAND	169.7500	0.0	167.1000	(T15) 162.2	A	LOCATED AT RED ROCK PEAK
	#N/A	#N/A	#N/A	#N/A	#N/A	#N/A	#N/A	#N/A
ST COMM	15	MEDEVAC A/G	155.2800		155.2800	(T6) 156.7		
AIRGUARD	16	EMERGENCY	168.6250	0.0	168.6250	(T1) 110.9	A	

**9. Prepared by: Name:** RESL  
**Signature:** \_\_\_\_\_  
**Date/Time:** 9/8/2024 2200  
**Personnel Count:** 29



ICS 204 Date/Time: 9/8/2024 2200 Personnel Count: 6

Signature: \_\_\_\_\_ Prepared by: Name: \_\_\_\_\_

Name	Ch	Function	Rx Freq	Rx Tone	Tx Freq	Tx Tone	Mode	Notes
NIFC C7	7	COMMAND	169.7500	0.0	167.1000	(T15) 162.2	A	LOCATED AT RED ROCK PEAK
NIFC T1	1	TACTICAL	168.0500	0.0	168.0500	(T15) 162.2	A	
A/G 43	14	A/G	167.6000	0.0	167.6000	0.0	A	
ST COMM	15	MEDEVAC A/G	155.2800		155.2800	(T6) 156.7		
AIRGUARD	16	EMERGENCY	168.6250	0.0	168.6250	(T1) 110.9	A	

8. Communications

Continue point protection on Black Eagle Mine  
 Complete hand prep and install structure protection along Yellowjacket Creek corridor  
 Monitor fire progression near Hoodoo Meadows and into the Wilson Creek drainage

7. Special Instructions:

Ensure LCEs is in place  
 Observe fire behavior and adjust tactics as needed when MAPs are met  
 Implement protection on values at risk  
 Firefighter and public safety

6. Work Assignments:

Resource Identifier	ALS	LWD	Leader	Personnel	Request #	Hours	Reporting Location
ENG6 - IDSCF E# 681		9/13	GERGORY NISSEN	4	E-2	0600-2000	
SOF3(1) SAFETY BOND		9/18	WALTON COLLINS BONDS	1	O-3,22	0600-2000	
AEMF AEMT CRAWFORD	Y	9/19	89AEMFV010 WILDERNE	1	O-6	0600-2000	

5. Resources Assigned: \*\* Resources Below in Bold are 12 Hour \*\*  
 Division/Group Supervisor: Richard Nielson / Damien (t)  
 Branch Director: Jay Bertek  
 Operations Section Chief: Jay Bertek  
 Night Ops:  
 Branch Safety:  
 Air Attack:

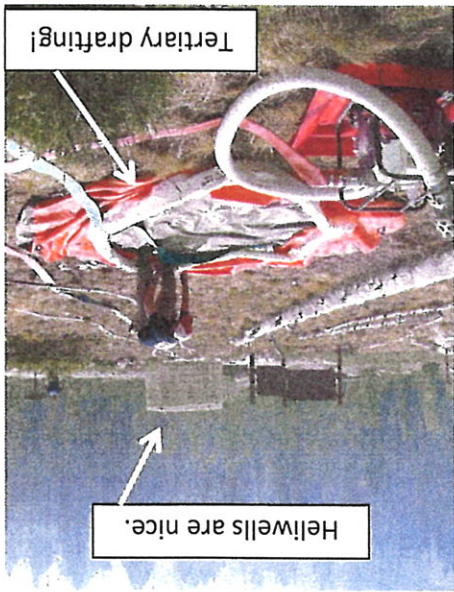
1. Incident Name: Black Eagle & Red Rock Fires	2. Operational Period: Date From: 09/09/24 Date To: 09/09/24 Time From: 0600 Time To: 2000	3. Branch: II	Division: BLACK EAGLE
--	--	---------------	-----------------------

ASSIGNMENT LIST (ICS 204 WF)

**Resource Advisor's Message – August 5, 2012  
Water-Drafting Best Practices – Secondary Sources**



This setup had a 2-inch line running back to a hardened site that trucks could hook up to, fire up the pump, and fill >50 feet from the creek.

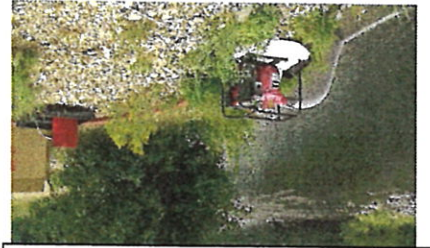


Tertiary drafting!

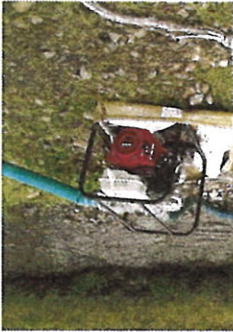
Heliwells are nice.



Trash pump servicing a pumpkin for tenders and engines.



Extra fuel nicely contained >10 feet from the stream.



Improved bucket-screen on a trash pump to service 2 fold-a-tanks in a turnout up on the highway.



Using secondary drafting techniques minimizes resource concerns including the potential to: directly disturb T&E fish, spread aquatic invasive species, damage streamside vegetation & wetlands, erode the banks of lakes and streams, and introduce contaminants (sediment, fuel ... even equipment!) to natural waterbodies.

The SCNF thanks you for your support!



**Finance Reminders**

**CTRS**  
 --Total your daily hours and circle them on your CTR

--Document your CTR when Operations determines you are not able to take a lunch break

--When recording hazard pay, show the category of hazardous exposure (e.g., firefighting, hover hookup) on your CTR

--List all crewmembers on your CTR

--Write/sign legibly

--Keep your time current

--Make sure resource order number is listed on the shift ticket.  
 --Fill out shift ticket completely and legibly.  
 --Ensure signatures are legible.  
 --Document names of all operators.  
 --Document daily if transport is being kept by the incident  
 --Include all shift hours and show a lunch break or documentation for a compensable lunch break -- even if equipment is on a daily rate  
 --Keep your time current



928.607.6546 or 775.870.6268

**THANK YOU FROM FINANCE**  
 ANY QUESTIONS, GIVE US A TEXT OR CALL.

If you have any possible claims, **DO NOT** wait until last minute. Please get them into Finance early as possible. Use email above to request forms or submit.

[2024.blackagle.finance@firenet.gov](mailto:2024.blackagle.finance@firenet.gov)

Please submit **daily** CTRs and Equipment Shift Tickets electronically through the email address below.

## MEDICAL PLAN (ICS 206 WF)

<b>1. Incident/Project Name</b>		Red Rock/Black Eagle	
<b>2. Operational Period</b>		09 Sept 2024 0600 - 2100	
<b>3. Ground Evacuation</b>			
<b>Name</b>	<b>Complete Address</b>	<b>Phone/Frequency</b>	<b>ALS</b>
Lemhi County-Salmon, ID	206 Courthouse Dr. Salmon, ID	Central Idaho Dispatch/911	No
Custer County-Challis, ID	611 Clinic Rd., Challis, ID	Central Idaho Dispatch/911	No
<b>4. Air Evacuation</b>			
<b>Name</b>	<b>Phone / Frequency</b>	<b>Location/Capabilities</b>	
Air Methods Air Idaho Rescue	Central Idaho Dispatch/911 (Secondary) 800-247-4324	ALS RN/Medic, Night Vision	
Life Flight Network	Central Idaho Dispatch/911 (Secondary) 800-232-0911	ALS CCT/RN/Medic, Night Vision Out of Butte, MT 40 min flight to Cobalt.	
Two Bear Air	Central Idaho Dispatch/911 (Secondary) 208-756-5157	BLS EMT, can take medic/gear with patient Out of Salmon Airport.	
<b>5. Clinic/Hospitals</b>			
<b>Name and Address</b>			
	<b>Gnd</b>	<b>Air</b>	<b>Phone</b>
Steele Memorial Medical Center	2 hr	16 min	208-756-5655
203 N Daisy St., Salmon, ID			
Lat: 45°10.422167 N			
Long: 113°53.555500 W			
EIRMC Eastern Idaho Regional Medical Center	4 hr	1 hr	208-227-2010
3100 Channing Way, Idaho Falls, ID			
Lat: 43° 28.2 N			
Long: 111° 59.4 W			
St. Patrick's Hospital	4 hr	1 hr	406-543-7271
500 West Broadway, Missoula, MT			
Lat: 46° 52.527333 N			
Long: 113° 59.986500 W			
St. Luke's Magic Valley Medical Center	6 hr	2 hrs	208-814-1440
801 Pole Line Rd W, Twin Falls, ID			
Lat: 42° 35.45 N			
Long: 114° 29.76 W			
<b>6. Division/Branch/Group</b>			
<b>Area Location Capability</b>			
<b>EMS Responders &amp; Capability:</b> Ambio 1- EMT Nick Heymanns (602) 469-0030			
<b>Equipment Available on Scene:</b> BLS Ambulance			
<b>EMS Responders &amp; Capability:</b> Medic Steve Rivera (914) 621-6678			
<b>Equipment Available on Scene:</b> ALS Line			
<b>EMS Responders &amp; Capability:</b> EMT Natasha Grigsby (760) 894-9308			
<b>Equipment Available on Scene:</b> BLS Line			
<b>EMS Responders &amp; Capability:</b> EMT Liam Sharkey (475) 218-8549			
<b>Equipment Available on Scene:</b> BLS Line			
<b>EMS Responders &amp; Capability:</b> AEMT Jody Crawford (406) 821-0041			
<b>Equipment Available on Scene:</b> ALS Line			
<b>7. Prepared By (Medical Unit Leader)</b>		<b>8. Date/Time</b>	
Kaitlin McKeel MEDL (t)		08 Sept 2024/1800	
<b>9. Reviewed By (Safety Officer)</b>		<b>10. Date/Time</b>	
Todd Demasters SOFC		08 Sept 2024/1800	



# UNIT LOG (ICS 214)

1. Incident Name:

Black Eagle & Red Rock Fires

2. Operational Period:

Date From: 3/6/20

Date To: 3/6/20

Time From: 0700

Time To: 1900

3. Unit Name/Designators

4. Unit Leader (Name and ICS Position)

5. Personnel Assigned/Designators

NAME

ICS POSITION

HOME BASE

6. Activity Log (Continue on Reverse)

TIME

MAJOR EVENTS

7. Prepared By:

Date/Time:

NIMS IAP