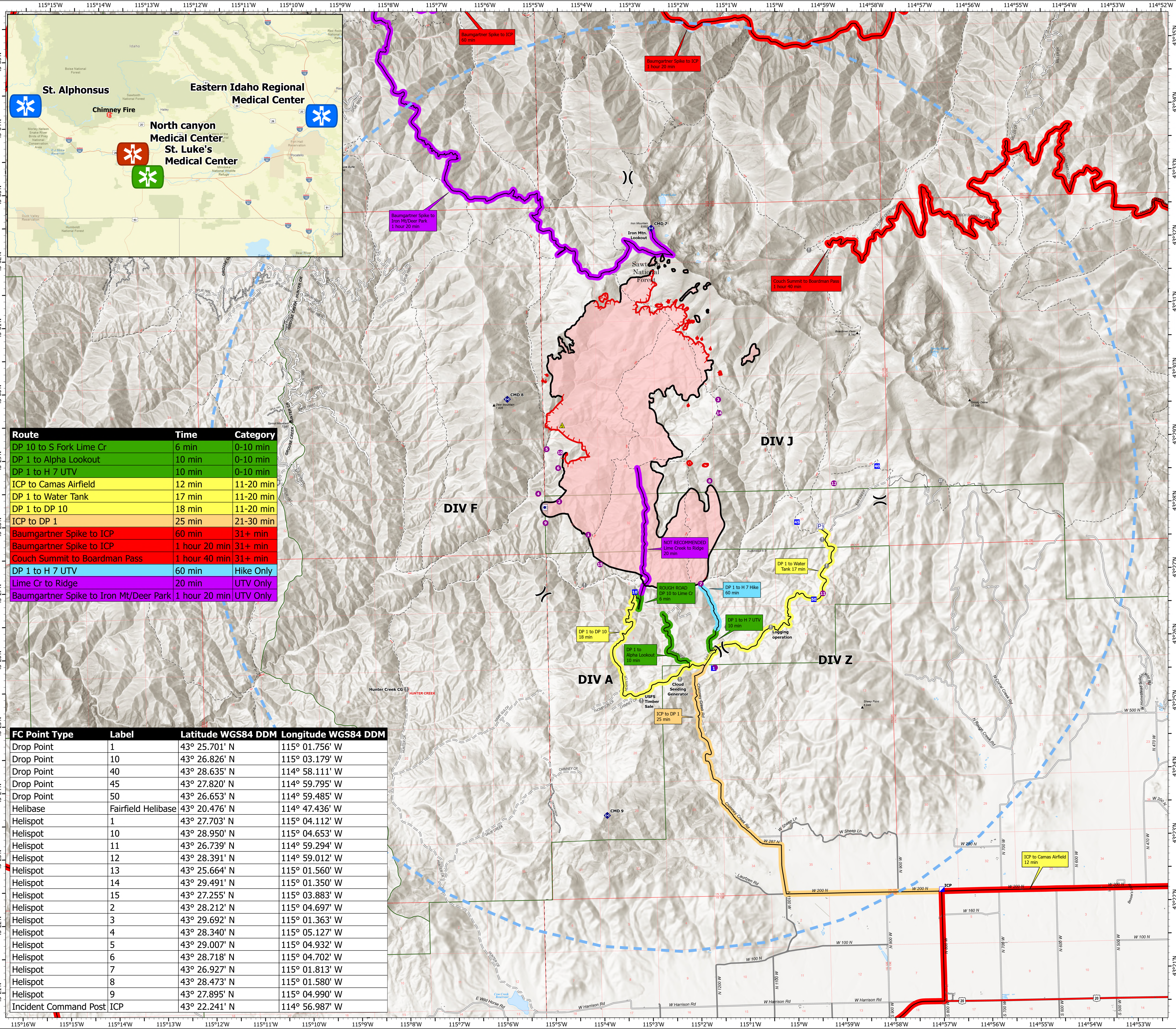


MEDICAL TRANSPORTATION

GROUND

Chimney
ID-EIS-000311
9/20/2024 Day Shift
6,519 acres at 9/18/2024 10:10 PM

- Other Property
- Pump
- Water Tank
- Helispot
- Division Break
- Incident Command Post
- Drop Point
- Value at Risk
- Gate
- Repeater
- Safety Zone
- 0-10 min
- 11-20 min
- 21-30 min
- 31+ min
- UTV Only
- Hike Only
- Temporary Flight Restriction
- Contained
- Uncontained
- Wildfire Daily Fire Perimeter
- Structure
- Campground
- Primary Highway
- Secondary Paved
- Secondary Dirt
- Secondary Paved
- Secondary Dirt
- Trail
- Trail
- Paved
- Gravel Road
- Dirt Road
- Unimproved Road
- Forest Service Roads Closed
- Administrative FS Boundary
- Ranger District Boundary
- County Boundary
- Township
- Section



Route	Time	Category
DP 10 to S Fork Lime Cr	6 min	0-10 min
DP 1 to Alpha Lookout	10 min	0-10 min
DP 1 to H 7 UTV	10 min	0-10 min
ICP to Camas Airfield	12 min	11-20 min
DP 1 to Water Tank	17 min	11-20 min
DP 1 to DP 10	18 min	11-20 min
ICP to DP 1	25 min	21-30 min
Baumgartner Spike to ICP	60 min	31+ min
Baumgartner Spike to ICP	1 hour 20 min	31+ min
Couch Summit to Boardman Pass	1 hour 40 min	31+ min
DP 1 to H 7 UTV	60 min	Hike Only
Lime Cr to Ridge	20 min	UTV Only
Baumgartner Spike to Iron Mt/Deer Park	1 hour 20 min	UTV Only

FC Point Type	Label	Latitude WGS84 DDM	Longitude WGS84 DDM
Drop Point	1	43° 25.701' N	115° 01.756' W
Drop Point	10	43° 26.826' N	115° 03.179' W
Drop Point	40	43° 28.635' N	114° 58.111' W
Drop Point	45	43° 27.820' N	114° 59.795' W
Drop Point	50	43° 26.653' N	114° 59.485' W
Helibase	Fairfield Helibase	43° 20.476' N	114° 47.436' W
Helispot	1	43° 27.703' N	115° 04.112' W
Helispot	10	43° 28.950' N	115° 04.653' W
Helispot	11	43° 26.739' N	114° 59.294' W
Helispot	12	43° 28.391' N	114° 59.012' W
Helispot	13	43° 25.664' N	115° 01.560' W
Helispot	14	43° 29.491' N	115° 01.350' W
Helispot	15	43° 27.255' N	115° 03.883' W
Helispot	2	43° 28.212' N	115° 04.697' W
Helispot	3	43° 29.692' N	115° 01.363' W
Helispot	4	43° 28.340' N	115° 05.127' W
Helispot	5	43° 29.007' N	115° 04.932' W
Helispot	6	43° 28.718' N	115° 04.702' W
Helispot	7	43° 26.927' N	115° 01.813' W
Helispot	8	43° 28.473' N	115° 01.580' W
Helispot	9	43° 27.895' N	115° 04.990' W
Incident Command Post	ICP	43° 22.241' N	114° 56.987' W

