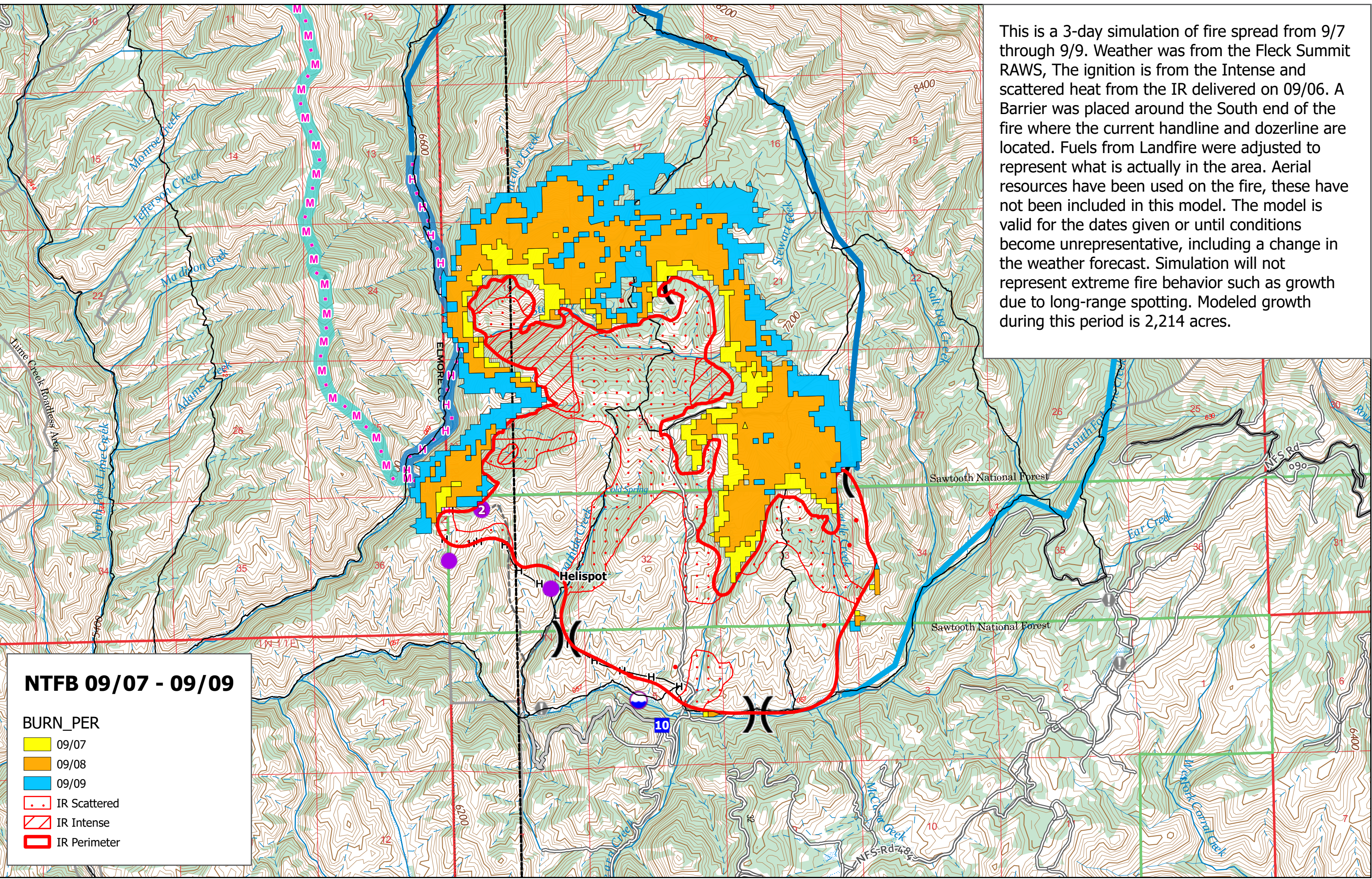


This is a 3-day simulation of fire spread from 9/7 through 9/9. Weather was from the Fleck Summit RAWS, The ignition is from the Intense and scattered heat from the IR delivered on 09/06. A Barrier was placed around the South end of the fire where the current handline and dozerline are located. Fuels from Landfire were adjusted to represent what is actually in the area. Aerial resources have been used on the fire, these have not been included in this model. The model is valid for the dates given or until conditions become unrepresentative, including a change in the weather forecast. Simulation will not represent extreme fire behavior such as growth due to long-range spotting. Modeled growth during this period is 2,214 acres.



**NTFB 09/07 - 09/09**

**BURN\_PER**

- 09/07
- 09/08
- 09/09
- IR Scattered
- IR Intense
- IR Perimeter