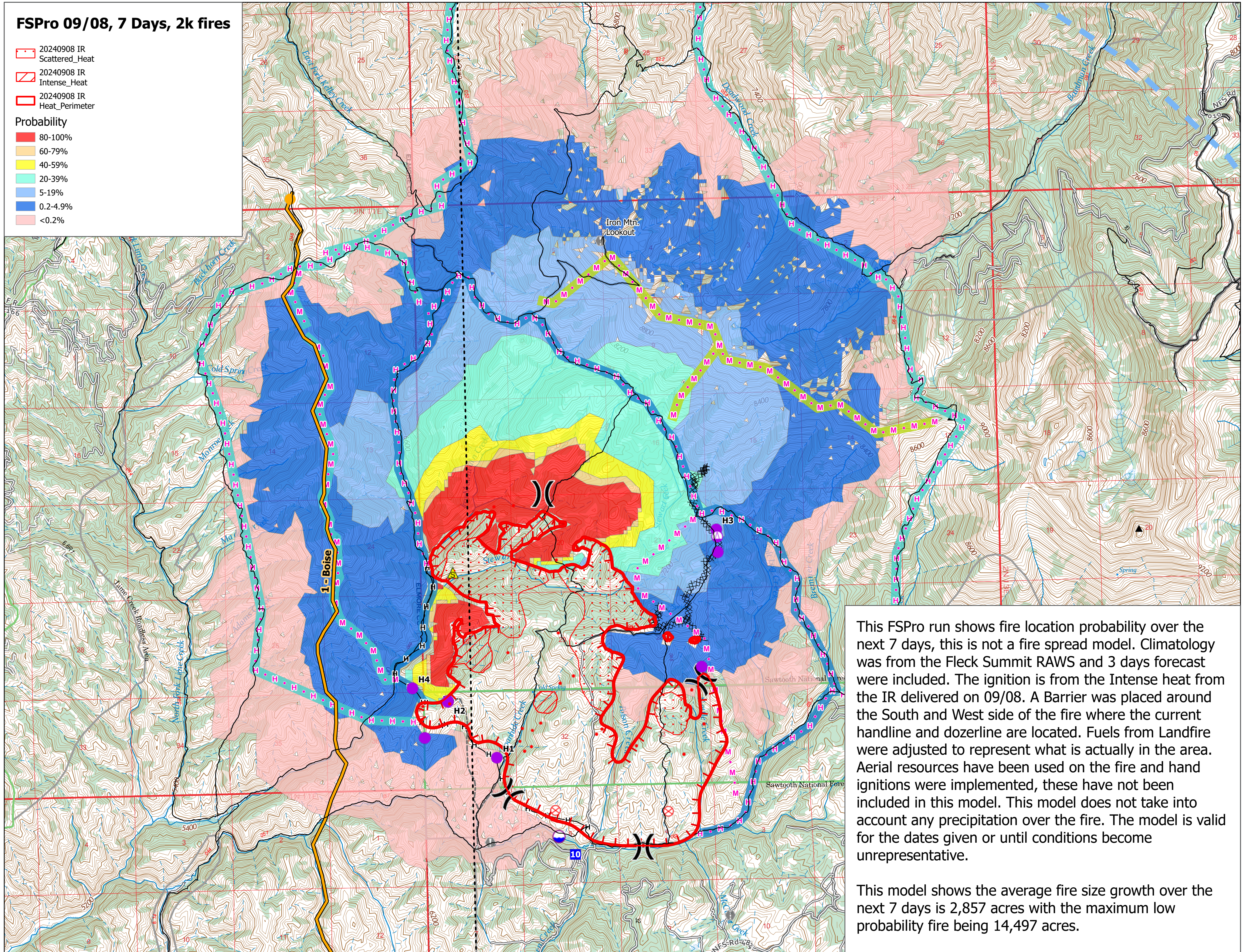


FSPro 09/08, 7 Days, 2k fires

- 20240908 IR Scattered_Heat
- 20240908 IR Intense_Heat
- 20240908 IR Heat_Perimeter

Probability

- 80-100%
- 60-79%
- 40-59%
- 20-39%
- 5-19%
- 0.2-4.9%
- <0.2%



This FSPro run shows fire location probability over the next 7 days, this is not a fire spread model. Climatology was from the Fleck Summit RAWS and 3 days forecast were included. The ignition is from the Intense heat from the IR delivered on 09/08. A Barrier was placed around the South and West side of the fire where the current handline and dozerline are located. Fuels from Landfire were adjusted to represent what is actually in the area. Aerial resources have been used on the fire and hand ignitions were implemented, these have not been included in this model. This model does not take into account any precipitation over the fire. The model is valid for the dates given or until conditions become unrepresentative.

This model shows the average fire size growth over the next 7 days is 2,857 acres with the maximum low probability fire being 14,497 acres.