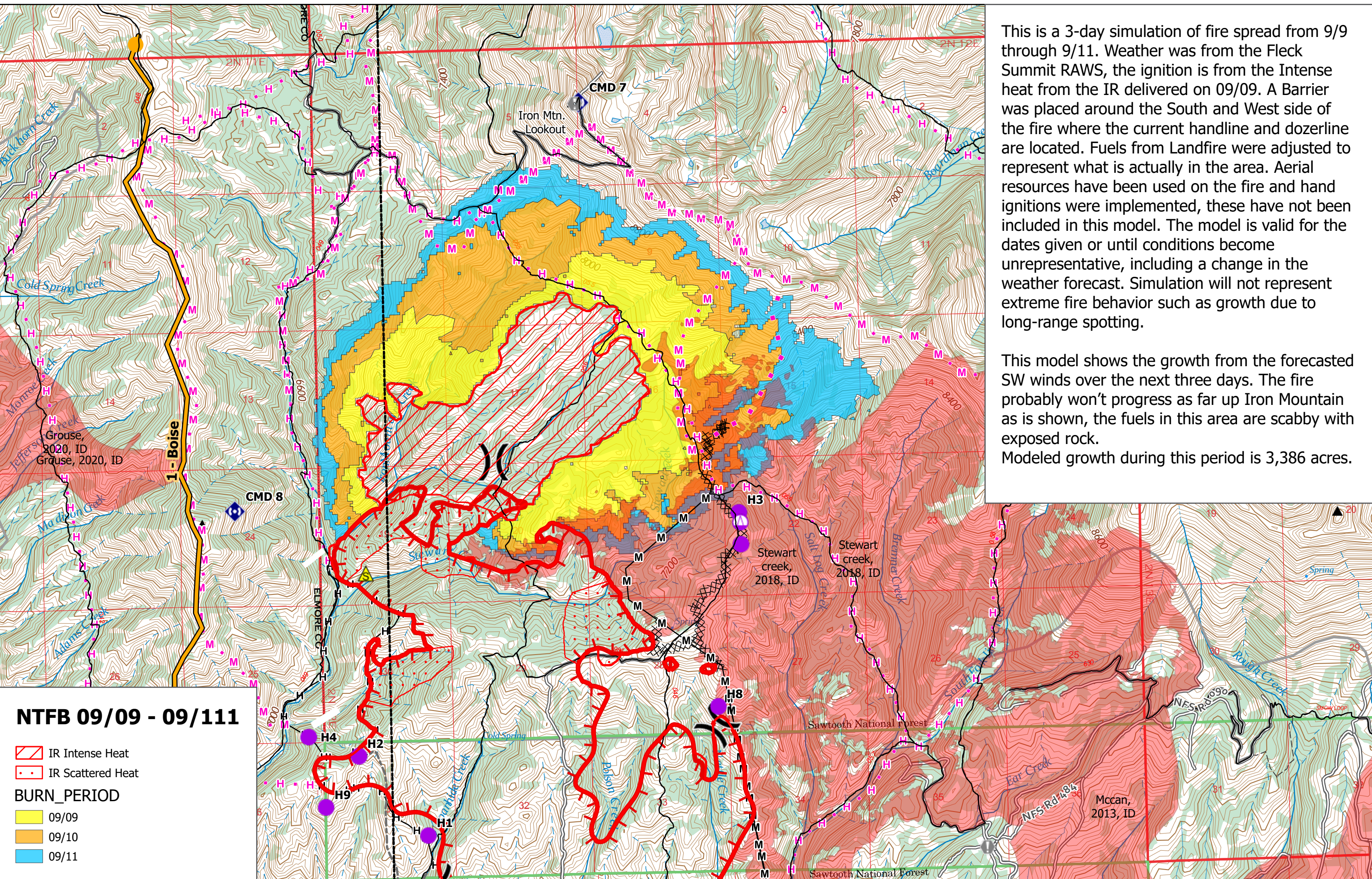



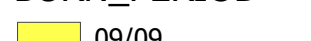
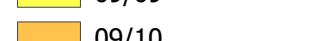


This is a 3-day simulation of fire spread from 9/9 through 9/11. Weather was from the Fleck Summit RAWS, the ignition is from the Intense heat from the IR delivered on 09/09. A Barrier was placed around the South and West side of the fire where the current handline and dozerline are located. Fuels from Landfire were adjusted to represent what is actually in the area. Aerial resources have been used on the fire and hand ignitions were implemented, these have not been included in this model. The model is valid for the dates given or until conditions become unrepresentative, including a change in the weather forecast. Simulation will not represent extreme fire behavior such as growth due to long-range spotting.

This model shows the growth from the forecasted SW winds over the next three days. The fire probably won't progress as far up Iron Mountain as is shown, the fuels in this area are scabby with exposed rock. Modeled growth during this period is 3,386 acres.



NTFB 09/09 - 09/11

-  IR Intense Heat
-  IR Scattered Heat
- BURN_PERIOD**
-  09/09
-  09/10
-  09/11