

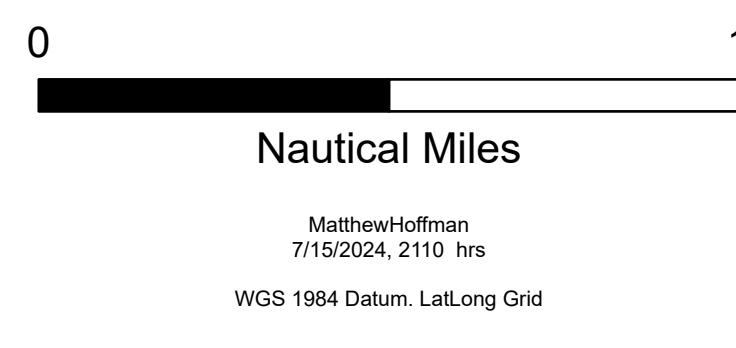
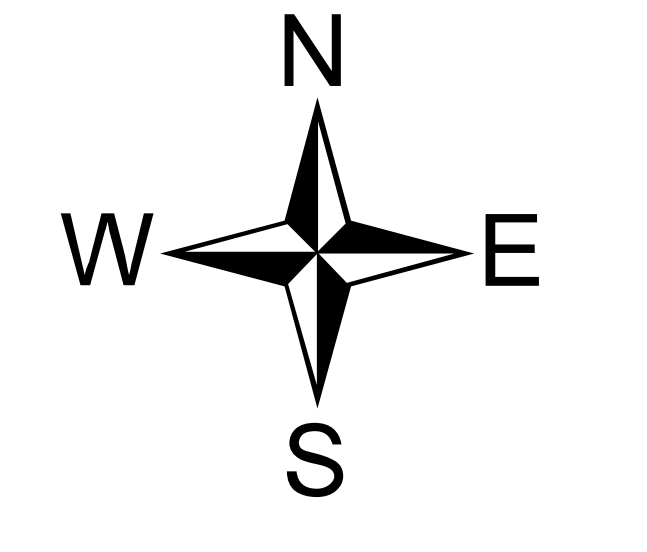
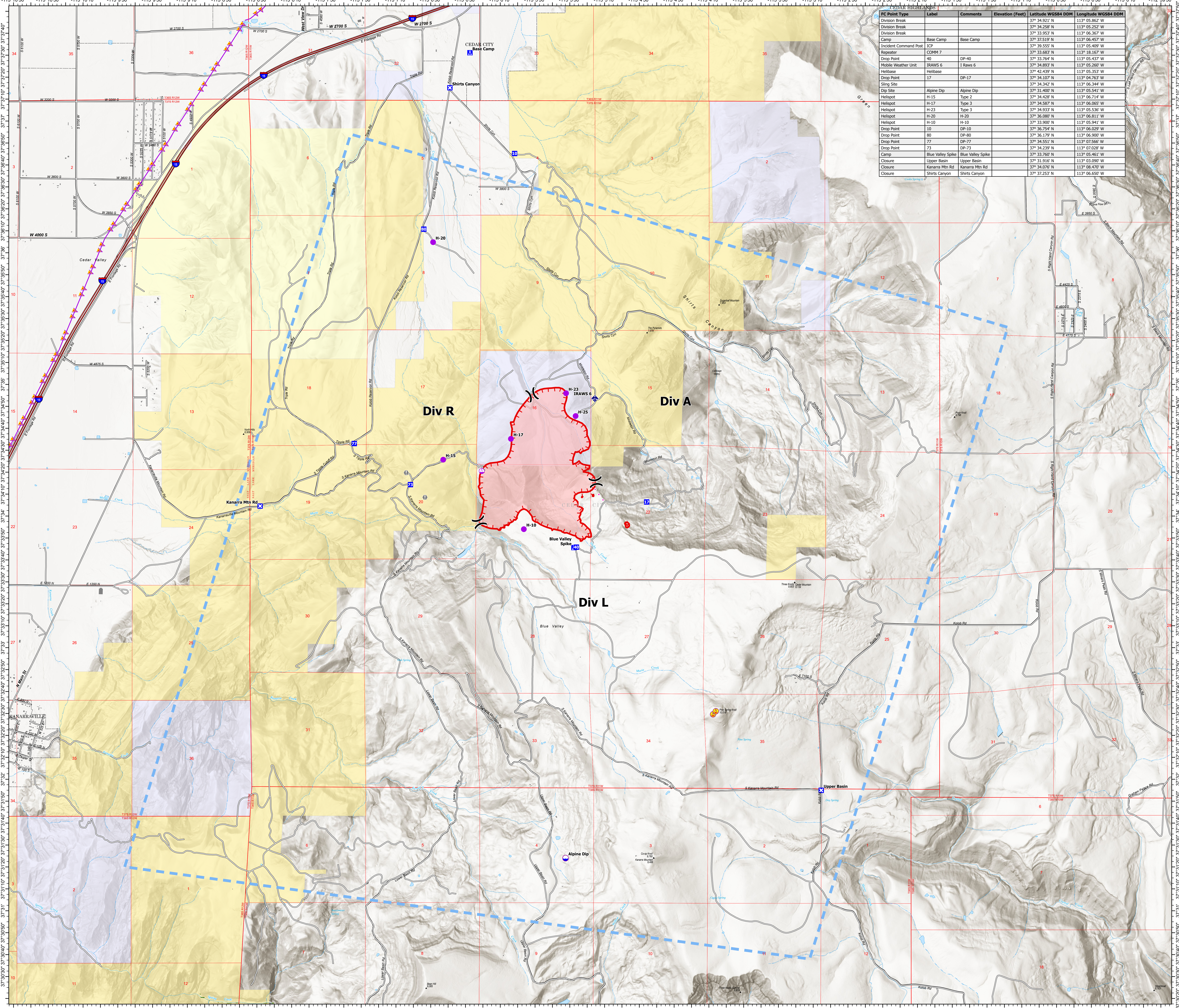
Air Operations

Graff Point
 UT-SWS-000369
 Acres from IR
 543 acres
 at 16 July 2024 Hrs



- Aerial Hazard
- Helispot
- Sling Site
- X Division Break
- Drop Point
- Closure
- Camp
- Value at Risk
- Mobile Weather Unit
- Dip Site
- Proposed Line
- Access Route
- Aerial Hazard
- Temporary Flight Restriction
- Uncontained
- Wildfire Daily Fire Perimeter
- Other State Lands
- Bureau of Land Management Lands
- American Indian Land BLM

IC Point Type	Label	Comments	Elevation (Feet)	Latitude WGS84 DDM	Longitude WGS84 DDM
Division Break				37° 34.521' N	113° 05.862' W
Division Break				37° 34.258' N	113° 05.252' W
Division Break				37° 33.953' N	113° 06.367' W
Camp	Base Camp	Base Camp		37° 37.519' N	113° 06.457' W
Incident Command Post	ICP			37° 39.555' N	113° 05.409' W
Repeater	COMM 7			37° 33.683' N	113° 18.167' W
Drop Point	40	DP-40		37° 33.764' N	113° 05.437' W
Mobile Weather Unit	IRAWS 6	I Rawls 6		37° 34.893' N	113° 05.260' W
Helibase	Helibase			37° 42.439' N	113° 05.353' W
Drop Point	17	DP-17		37° 34.107' N	113° 04.763' W
Sling Site				37° 34.342' N	113° 06.344' W
Dip Site	Alpine Dip	Alpine Dip		37° 31.400' N	113° 05.941' W
Helispot	H-15	Type 2		37° 34.428' N	113° 06.114' W
Helispot	H-17	Type 3		37° 34.587' N	113° 06.065' W
Helispot	H-23	Type 3		37° 34.933' N	113° 05.536' W
Helispot	H-20	H-20		37° 36.080' N	113° 06.811' W
Helispot	H-10	H-10		37° 33.900' N	113° 05.941' W
Drop Point	10	DP-10		37° 36.754' N	113° 06.059' W
Drop Point	80	DP-80		37° 36.179' N	113° 06.900' W
Drop Point	77	DP-77		37° 34.551' N	113° 07.566' W
Drop Point	73	DP-73		37° 34.239' N	113° 07.028' W
Camp	Blue Valley Spike	Blue Valley Spike		37° 33.760' N	113° 05.461' W
Closure	Upper Basin	Upper Basin		37° 31.916' N	113° 03.090' W
Closure	Kanarra Mtn Rd	Kanarra Mtn Rd		37° 34.076' N	113° 08.070' W
Closure	Shirts Canyon	Shirts Canyon		37° 37.253' N	113° 06.659' W



Matthew Hoffman
 7/15/2024, 2:10 PM
 WGS 1984 Datum, Lat/Long Grid