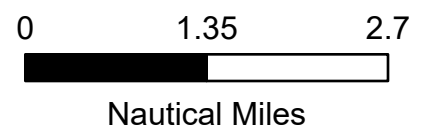
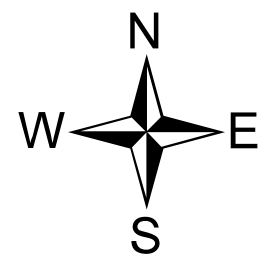


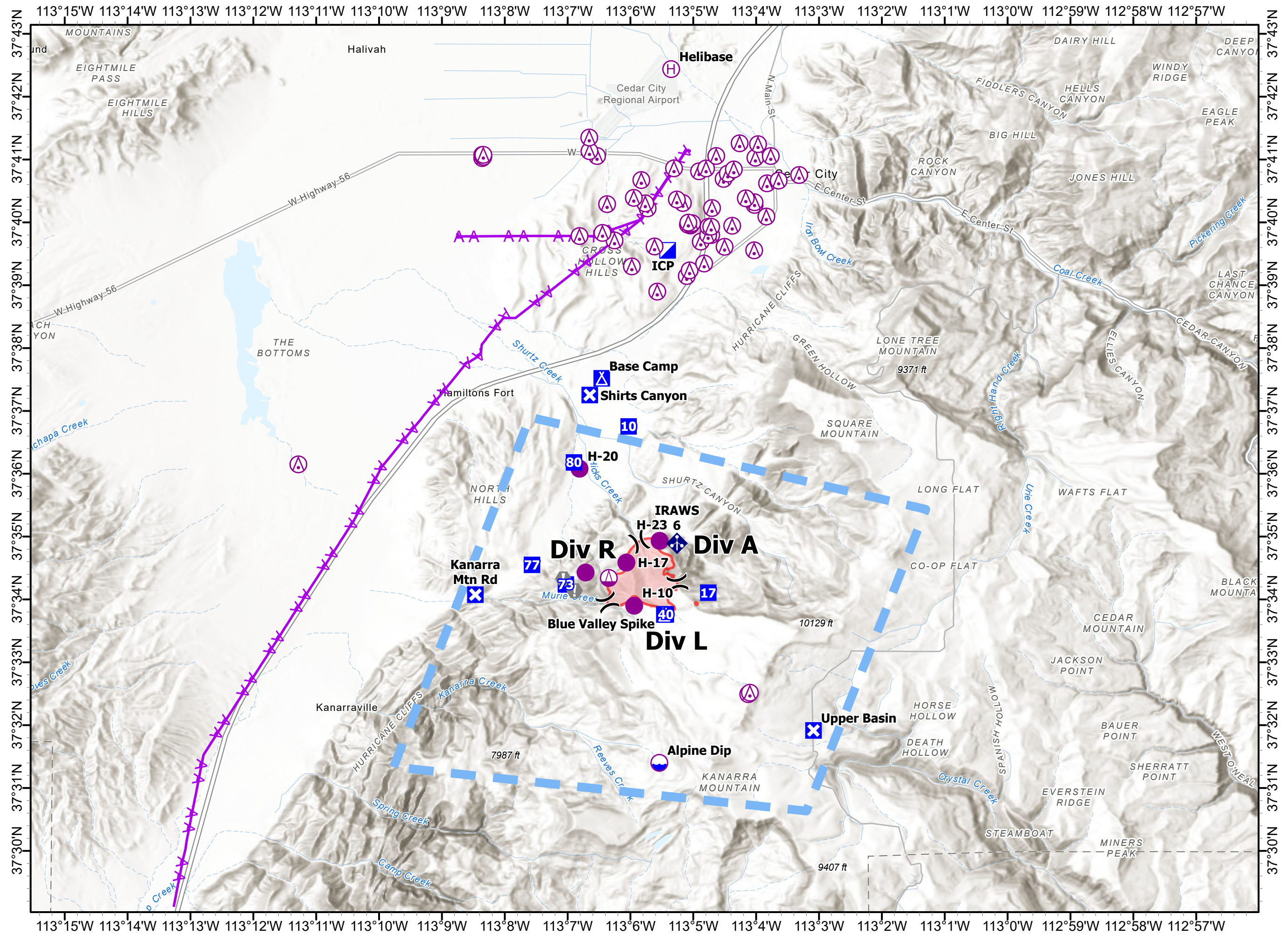
**Air Ops**  
 Graff Point  
 UT-SWS-000369  
 Acres from IR  
 543 acres  
 at 16 July 2024 Hrs



- Aerial Hazard
- Dip Site
- Helispot
- Helibase
- Sling Site
- Division Break
- Incident Command Post
- Drop Point
- Closure
- Camp
- Value at Risk
- Mobile Weather Unit
- Aerial Hazard
- Temporary Flight Restriction
- Wildfire Daily Fire Perimeter



Matthew Hoffman  
 7/15/2024, 2110 hrs  
 WGS 1984 Datum, LatLong Grid





<b>FC Point Type</b>	<b>Label</b>	<b>Comments</b>	<b>Latitude WGS84 DDM</b>	<b>Longitude WGS84 DDM</b>
Division Break			37° 34.921' N	113° 05.862' W
Division Break			37° 34.258' N	113° 05.252' W
Division Break			37° 33.953' N	113° 06.367' W
Camp	Base Camp	Base Camp	37° 37.519' N	113° 06.457' W
Incident Command Post	ICP		37° 39.555' N	113° 05.409' W
Repeater	COMM 7		37° 33.683' N	113° 18.167' W
Drop Point	40	DP-40	37° 33.764' N	113° 05.437' W
Mobile Weather Unit	IRAWS 6	I Raws 6	37° 34.893' N	113° 05.260' W
Helibase	Helibase		37° 42.439' N	113° 05.353' W
Drop Point	17	DP-17	37° 34.107' N	113° 04.763' W
Sling Site			37° 34.342' N	113° 06.344' W
Dip Site	Alpine Dip	Alpine Dip	37° 31.400' N	113° 05.541' W
Helispot	H-15	Type 2	37° 34.428' N	113° 06.714' W
Helispot	H-17	Type 3	37° 34.587' N	113° 06.065' W
Helispot	H-23	Type 3	37° 34.933' N	113° 05.536' W
Helispot	H-20	H-20	37° 36.080' N	113° 06.811' W
Helispot	H-10	H-10	37° 33.900' N	113° 05.941' W
Drop Point	10	DP-10	37° 36.754' N	113° 06.029' W
Drop Point	80	DP-80	37° 36.179' N	113° 06.900' W
Drop Point	77	DP-77	37° 34.551' N	113° 07.566' W
Drop Point	73	DP-73	37° 34.239' N	113° 07.028' W
Camp	Blue Valley Spike	Blue Valley Spike	37° 33.760' N	113° 05.461' W
Closure	Upper Basin	Upper Basin	37° 31.916' N	113° 03.090' W
Closure	Kanarra Mtn Rd	Kanarra Mtn Rd	37° 34.076' N	113° 08.470' W
Closure	Shirts Canyon	Shirts Canyon	37° 37.253' N	113° 06.650' W