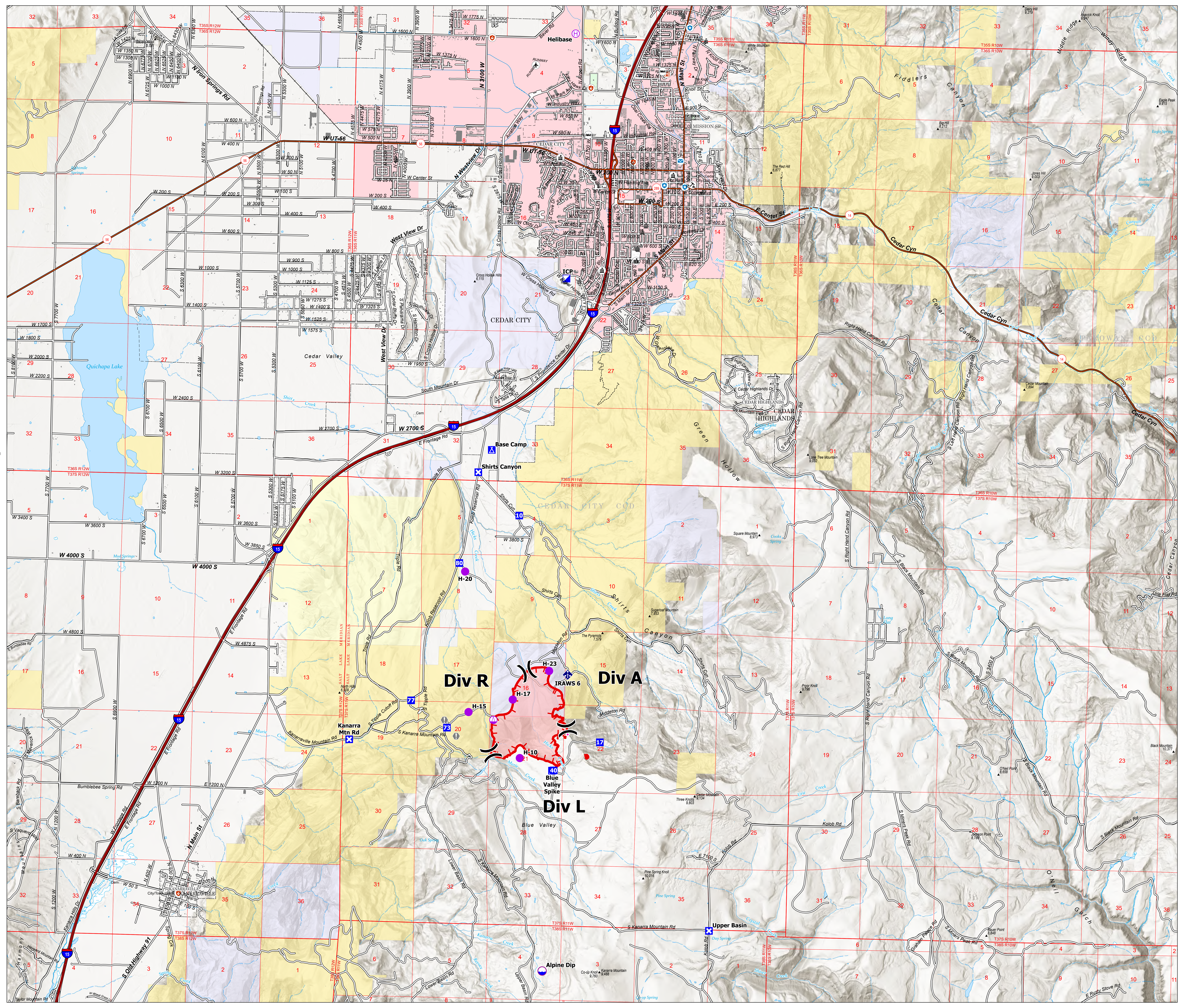


Transportation
 Graff Point
 UT-SWS-000369
 16 July 2024
 543 acres
 at 7/15/2024 @ 0049 Hrs



- | | |
|---|--|
| <ul style="list-style-type: none"> Event Point Helibase Sling Site Incident Break Incident Command Post Drop Point Closure Camp Value at Risk Mobile Weather Unit Dip Site Event Line Planning Reference Perimeter Line Event Polygon Other Prescribed Fire Wildfire Daily Fire Perimeter HIFLD Plus GTAC Primary Highway Secondary Highway Road, Unspecified Road, Paved Airport FAA Airport Helipoint Structure USGS Cemetery City / Town Hall School (K - 12) College / University Post Office Fire Station / EMS Station Hospital / Medical Center Law Enforcement Court House; State Capitol; US Capitol USGS Office Region/Supervisor Office GNIS Mountain Feature USGS Gap; Summit NHD Point USGS Gaging Station Springs/Seep Well NHD Flowing GTAC Artificial Path | <ul style="list-style-type: none"> Canal / Ditch Pipeline Underground Stream/River Stream/River Intermittent NHD Line USGS Dam / Weir Nonarthen Shore Tunnel NHD Waterbody USGS Lake / Pond Lake / Pond (Intermittent) Reservoir CONUS Wetlands USFWS Freshwater Emergent Wetland Freshwater Forested/Shrub Wetland Railroads, FRA NET Main sub network National Trail USGS GapRoads GTAC Road, Paved Place CENSUS Incorporated Place Census Designated Place Structure FEMA Urban Area PADUS USGS State Park Non Forest USFS Ranger District PLSS First Division BLM SN PLSS Township BLM City Incorporate - etc County CENSUS State CENSUS USFS Administrative Forest Airfield FAA Runways Landform Area USGS Other - label only USFS BasicOwnership GTAC Forest Service Land PADUS Ownership USGS State Public Lands Other State Lands Bureau of Land Management Lands American Indian Land BLM Urban Area |
|---|--|

