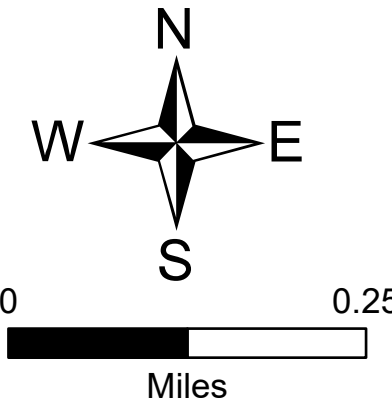
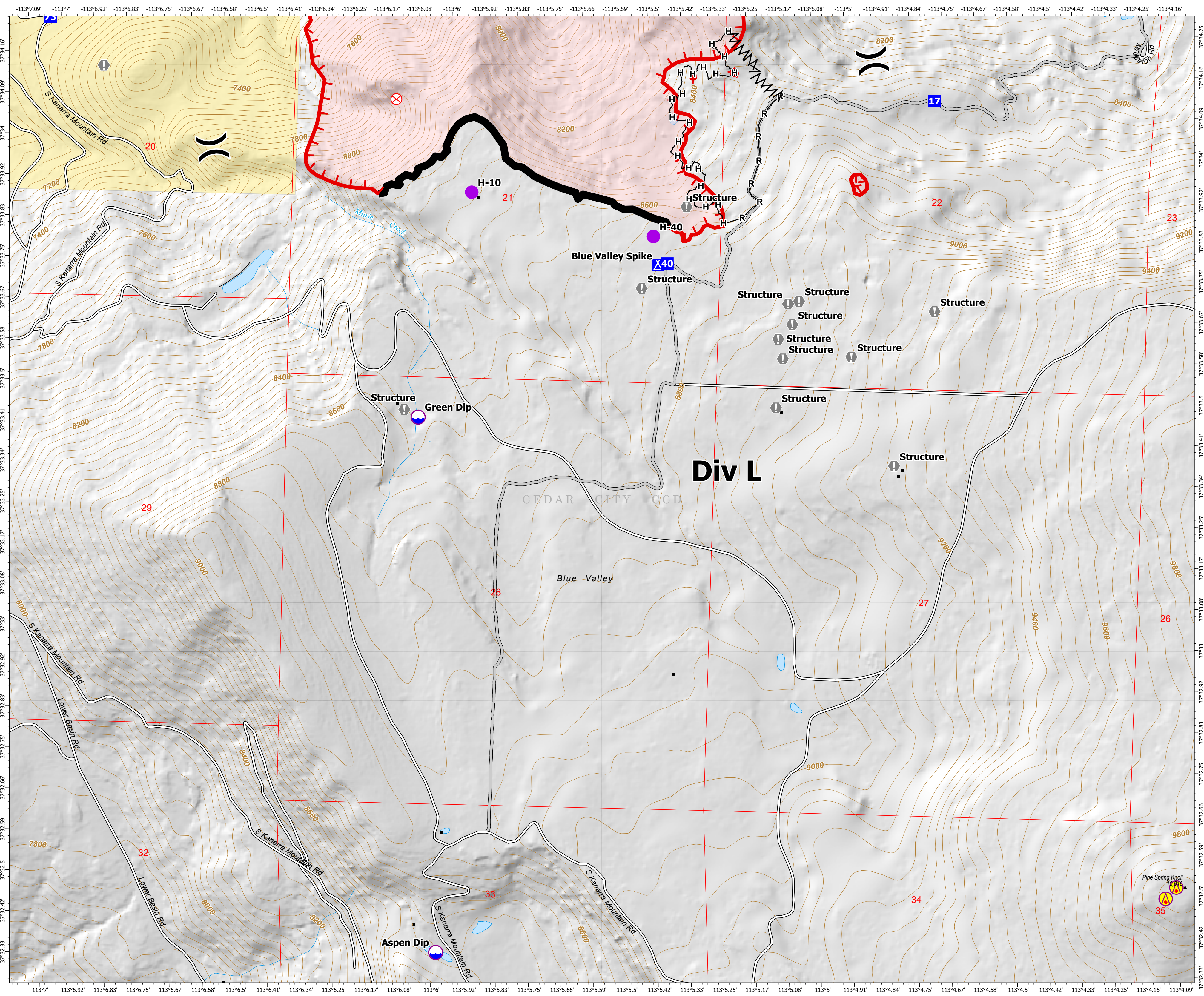


**Operations Division L**  
 Graff Point  
 UT-SWS-000369  
 17 July 2024  
 543 acres  
 as of 17 July 2024 Hrs



- Aerial Hazard
- Helispot
- ) Division Break
- Drop Point
- Camp
- ⊗ Fire Origin
- Value at Risk
- Dip Site
- Completed Fuel Break
- Completed Hand Line
- Completed Road as Line
- Access Route
- Contained
- Uncontained
- Wildfire Daily Fire Perimeter
- Spring/Seep
- Lake / Pond
- Lake / Pond (Intermittent)
- Dam / Weir
- Stream/River
- Road, Unspecified
- UT\_Roads\_AGRC
- ▲ Gap; Summit
- Normal Index
- Normal Intermediate
- Structure FEMA
- SN
- PLS Township BLM
- County CENSUS
- State CENSUS
- Bureau of Land Management Lands



Matthew Hoffman  
 7/16/2024, 2029 hrs  
 North American 1983 Datum. Lat/Long Grid