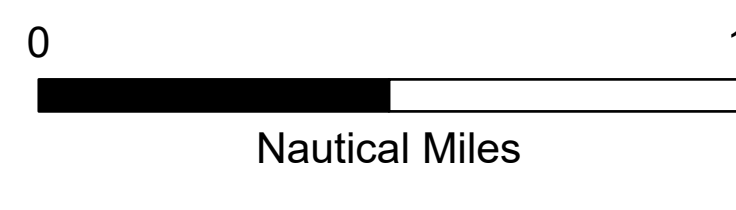
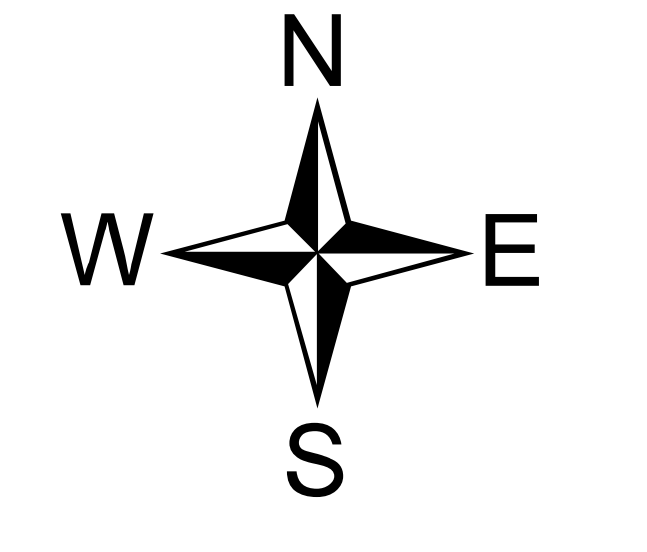
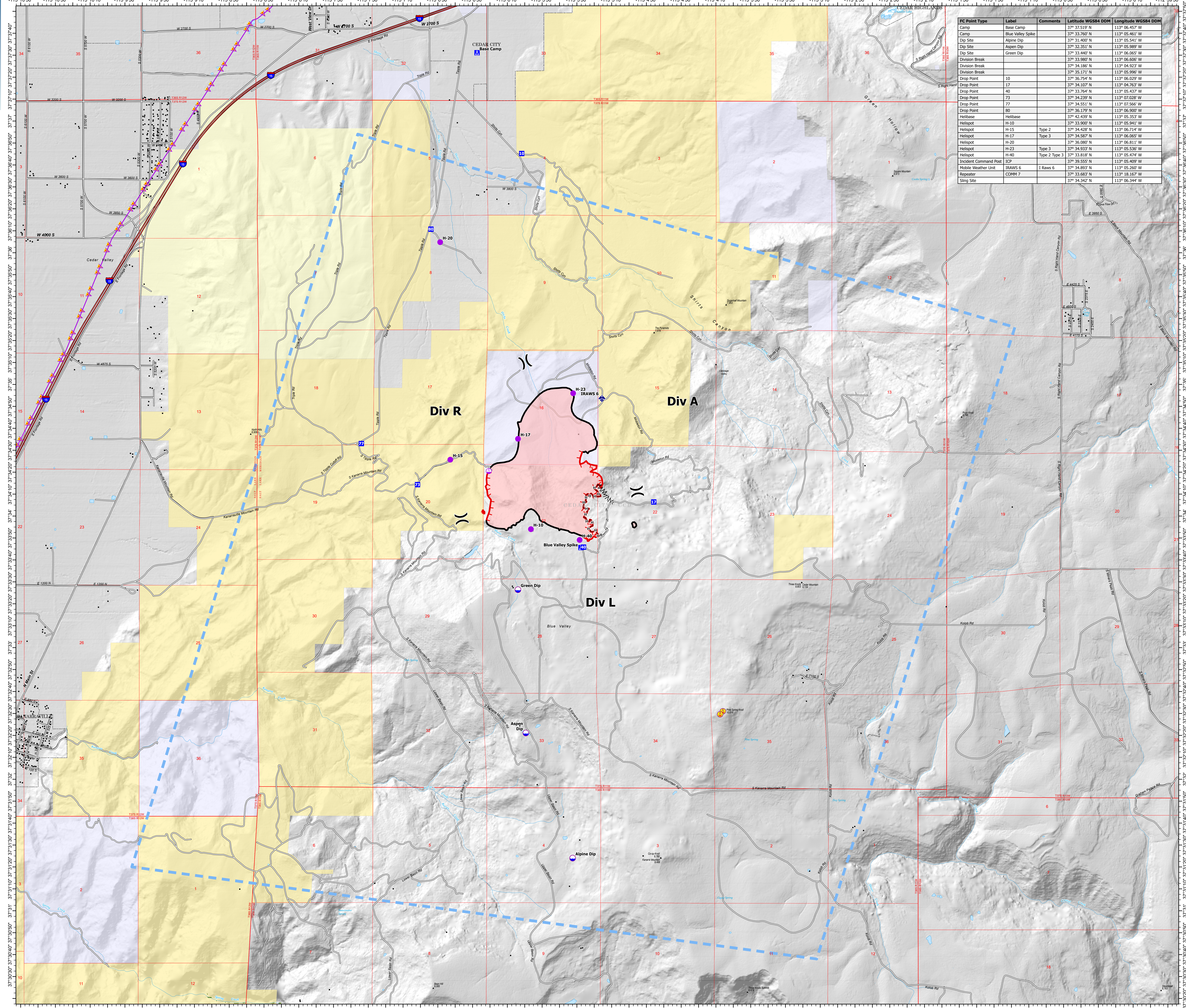




- Aerial Hazard
- Helispot
- Sling Site
- X Division Break
- Drop Point
- Camp
- ✈ Mobile Weather Unit
- Dip Site
- Completed Fuel Break
- Completed Hand Line
- Completed Road as Line
- Access Route
- Aerial Hazard
- Temporary Flight Restriction
- Contained
- Uncontained
- Wildfire Daily Fire Perimeter
- Other State Lands
- Bureau of Land Management Lands
- American Indian Land BLM

FC Point Type	Label	Comments	Latitude WGS84 DDM	Longitude WGS84 DDM
Camp	Base Camp		37° 37.519' N	113° 06.457' W
Camp	Blue Valley Spk		37° 33.767' N	113° 05.461' W
Dip Site	Aspen Dip		37° 31.400' N	113° 05.541' W
Dip Site	Aspen Dip		37° 32.351' N	113° 05.989' W
Dip Site	Green Dip		37° 33.440' N	113° 06.065' W
Division Break			37° 33.980' N	113° 06.500' W
Division Break			37° 34.186' N	113° 04.523' W
Division Break			37° 35.171' N	113° 05.990' W
Drop Point	10		37° 36.754' N	113° 06.029' W
Drop Point	17		37° 34.107' N	113° 04.763' W
Drop Point	40		37° 33.764' N	113° 05.437' W
Drop Point	73		37° 34.239' N	113° 07.028' W
Drop Point	77		37° 34.551' N	113° 07.566' W
Drop Point	80		37° 36.179' N	113° 06.900' W
Helibase	Helibase		37° 42.439' N	113° 05.353' W
Helispot	H-10		37° 33.900' N	113° 05.941' W
Helispot	H-15	Type 2	37° 34.428' N	113° 06.714' W
Helispot	H-17	Type 3	37° 34.507' N	113° 07.085' W
Helispot	H-20		37° 36.080' N	113° 06.811' W
Helispot	H-23	Type 3	37° 34.933' N	113° 05.536' W
Helispot	H-40	Type 2 Type 3	37° 33.818' N	113° 05.474' W
Incident Command Post	ICP		37° 39.555' N	113° 05.409' W
Mobile Weather Unit	IRAWS 6	I Raw 6	37° 34.893' N	113° 05.260' W
Roadster	COMEX 7		37° 33.682' N	113° 08.167' W
Sling Site			37° 34.342' N	113° 06.344' W



Matthew Hoffman  
 7/17/2024, 1726 hrs  
 Acres from IR  
 WGS 1984 Datum, Lat/Long Grid